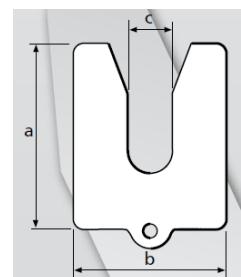
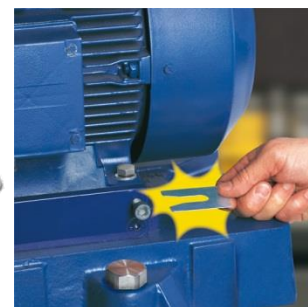


Precision Shims – for precision alignment

Stainless steel precut shims are more accurate and designed to speed up the alignment job - when even minutes of downtime count.

- ✓ Bur-free for higher accuracy in alignment
- ✓ Time-saving permanent thickness / dimension marking
- ✓ Reusable, corrosion-resistant high-quality stainless steel
- ✓ Two machine foot sizes and eight thicknesses that fit almost all machine feet
- ✓ No 'leaf spring' effect from stacked shims: come in a graded range of thicknesses that allows you to put together virtually all heights with just 3 shims
- ✓ Perfectly flat for stable, consistent machine support
- ✓ Perforated tab for easier positioning and removal
- ✓ Rounded corners and longitudinal shape for optimum support of the machine foot without material overhang



Size A					Size B				
Dimensions (mm)					Dimensions (mm)				
Thickness	a	b	c	Number	Thickness	a	b	c	Number
0.025 mm / 0.001"	60	50	15	20	0.025 mm / 0.001"	80	70	22	20
0.05 mm / 0.002"	60	50	15	20	0.05 mm / 0.002"	80	70	22	20
0.1 mm / 0.004"	60	50	15	20	0.1 mm / 0.004"	80	70	22	20
0.2 mm / 0.008"	60	50	15	20	0.2 mm / 0.008"	80	70	22	20
0.4 mm / 0.016"	60	50	15	20	0.4 mm / 0.016"	80	70	22	20
0.7 mm / 0.028"	60	50	15	20	0.7 mm / 0.028"	80	70	22	20
1.0 mm / 0.040"	60	50	15	20	1.0 mm / 0.040"	80	70	22	20
2.0 mm / 0.080"	60	50	15	20	2.0 mm / 0.080"	80	70	22	20



Lightweight – robust – waterproof case

Case is impact-proof, airtight, waterproof, dustproof, buoyant, tropicalized, extremely durable - resistant to most chemicals and temperatures (-23°C and +99°C)

- ✓ Clear arrangement of the shims
- ✓ Clear thickness labelling
- ✓ Plenty of room for additional shims



Description	Weight (kg)	Length (mm)	Width (mm)	Height (mm)
Shim kit – 320 shims	6.1	27.0	24.6	12.4