

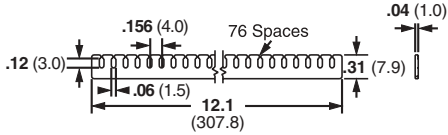
A. System Overview

Fanning Strip System

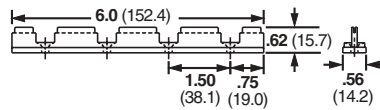
- Holds wires in a specific orientation
- No sharp edges to damage wire insulation
- Will accept wires up to 18 AWG
- Fanning strip can remain as part of completed harness

B1. Cable Ties

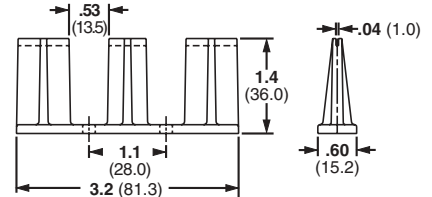
B2. Cable Accessories



FS1



FSH40



FSHH

B3. Stainless Steel

C1. Wiring Duct



Part Number	Material	Color	Mounting Method	Std. Pkg. Qty.	Std. Ctn. Qty.
FS156-C	Nylon 6.6	Natural	—	100	1000
FSH40-X	ABS	Gray	Four #8 (M4) Screws	10	100
FSHH-X	ABS	Gray	Two #8 (M4) Screws	10	100

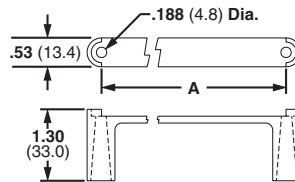
C2. Surface Raceway

Spring Wire Breakout System

- Harness board spring and spring holder holds wire ends secure
- Wires simply pull out from spring when harness is removed while harness is being fabricated

C3. Abrasion Protection

C4. Cable Management



SHH



PBSC

D1. Terminals

D2. Power & Grounding Connectors

Part Number	Hole Spacing A		Material	Color	Mounting Method	Std. Pkg. Qty.	Std. Ctn. Qty.
	In.	mm					
PBSC1-X	1.00	25.4	Steel	—	SHH1 Spring Holder	10	100
PBSC3-X	3.00	76.2	Steel	—	—	10	100
PBSC6-X	6.00	152.4	Steel	—	SHH3 Spring Holder	10	100
PBSC12-X	12.00	304.8	Steel	—	—	10	100
SHH1-S8-X*	1.85	47.0	Nylon 6.6	Natural	Two #8 (M4) Screws	10	100

*Supplied with two #8 (M4) screws.

E1. Labeling System

Harness Board Standoff Posts

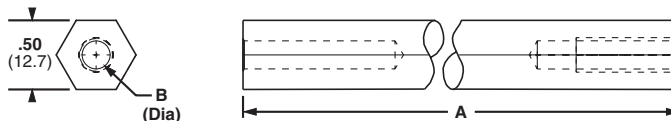
- Used to hold a push mount accessory or cable tie at a specific location on a harness board

E2. Labels

E3. Pre-Printed & Write-On Markers

E4. Lockout/Tagout & Safety Solutions

F. Index



Part Number	Height A		Hole Diameter B		For Use With	Material	Mounting Method	Std. Pkg. Qty.	Std. Ctn. Qty.
	In.	mm	In.	mm					
HB2SP19-X	2.00	50.8	.20	5.1	PLWP, PRWP, WS, VWS, HWS, TPM	Aluminum	M6 Screw	10	100
HB2SP25-X	4.00	101.6	.30	7.5	PLWP, PRWP, PLP, THMS, HCMP, PMCC	Aluminum	M6 Screw	10	100