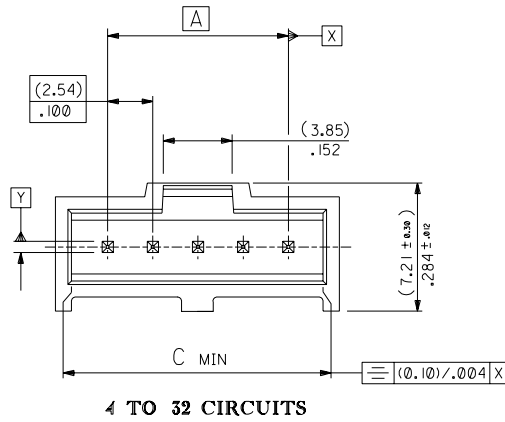
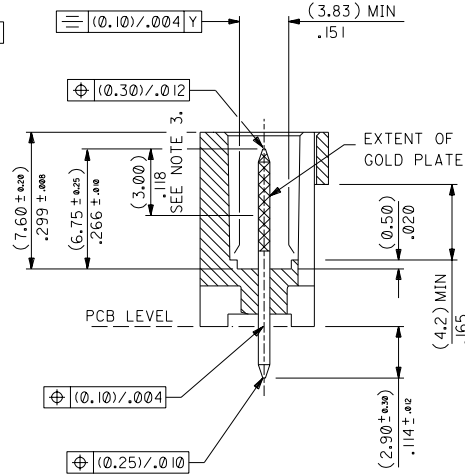
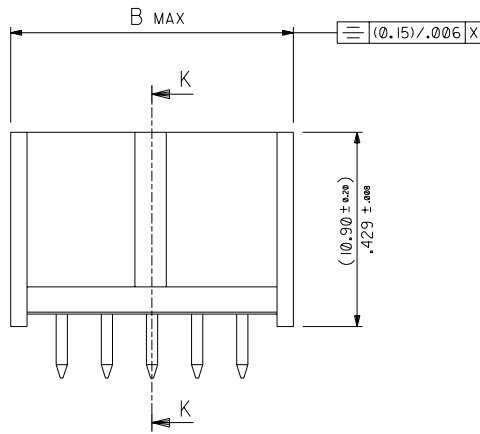
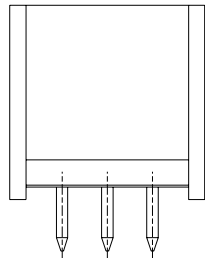


1 TO 3 CIRCUITS



4 TO 32 CIRCUITS



SECTION K-K

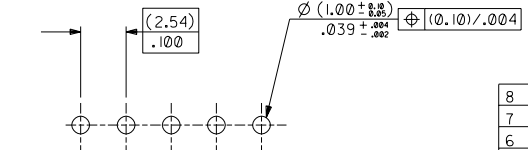
NOTES

- 1. MATERIAL:-
 - PIN:- (0.635) ± .025 SO. BRASS WIRE.
 - HOUSING:- 15% GLASS FILLED POLYESTER
 - UL 94 V-0 COLOUR BLACK

2. FOR PLATING VERSIONS SEE SHEET 2.

3. MEASUREMENT POINT FOR MINIMUM PLATING THICKNESS

NO. OF CKTS	DIM A	DIM B	DIM C
1	—	(6.27) / 0.247	(3.86) / 0.152
2	(2.54) / 0.100	(8.81) / 0.347	(6.40) / 0.252
3	(5.08) / 0.200	(11.35) / 0.447	(8.94) / 0.352
4	(7.62) / 0.300	(13.89) / 0.547	(11.48) / 0.452
5	(10.16) / 0.400	(16.43) / 0.647	(14.02) / 0.552
6	(12.70) / 0.500	(18.97) / 0.747	(16.56) / 0.652
7	(15.24) / 0.600	(21.51) / 0.847	(19.10) / 0.752
8	(17.78) / 0.700	(24.05) / 0.947	(21.64) / 0.852
9	(20.32) / 0.800	(26.59) / 1.047	(24.18) / 0.952
10	(22.86) / 0.900	(29.13) / 1.147	(26.72) / 1.052
11			
12	(27.94) / 1.100	(34.21) / 1.347	(31.80) / 1.252
13	(30.48) / 1.200	(36.75) / 1.447	(34.34) / 1.352
14	(33.02) / 1.300	(39.29) / 1.547	(36.88) / 1.452
15	(35.56) / 1.400	(41.83) / 1.647	(39.42) / 1.552
16	(38.10) / 1.500	(44.37) / 1.747	(41.96) / 1.652
17			
18	(43.18) / 1.700	(49.45) / 1.947	(47.04) / 1.852
19			
20			
21			
22	(53.34) / 2.100	(59.61) / 2.347	(57.20) / 2.252
23			
24			
25	(60.96) / 2.400	(67.23) / 2.647	(64.82) / 2.552
26			
27			
28			
29			
30	(73.66) / 2.900	(79.93) / 3.147	(77.52) / 3.052
31			
32	(78.74) / 3.100	(85.01) / 3.347	(82.60) / 3.252



RECOMMENDED P.C. BOARD HOLE PATTERN

8	A
7	P
6	S
5	N
4	P
3	K
2	M
1	T

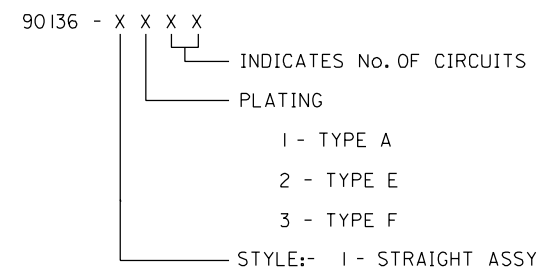
FOR PREVIOUS DRAWING ISSUES SEE MRI.

ADDED SHEET 8 EC NO. 2003-0138 DRWN: P. SHEAHAN 02/08/15 CHK: / / / APPR: / / /	QUALITY SYMBOLS MAJOR CRITICAL C =	GENERAL TOLERANCES: (UNLESS SPECIFIED) mm INCH		SCALE 5:1	DESIGN UNITS <input checked="" type="checkbox"/> mm <input type="checkbox"/> INCH	THIRD ANGLE PROJECTION <input checked="" type="checkbox"/> THIRD ANGLE <input type="checkbox"/> FIRST ANGLE	DIMENSIONS: <input checked="" type="checkbox"/> mm <input type="checkbox"/> INCH <input type="checkbox"/> mm ONLY	SHT REV REVISE ON CAD ONLY		
		4 PLACES ±0. ±. 3 PLACES ±0. ±.004 2 PLACES ±0.10 ±. 1 PLACE ±0. ±.	ANGLUAR: ± 1/2 °	DRAWN BY & DATE KS 87/10/30	CHECKED BY & DATE / /	APPROVED BY & DATE / /	TITLE: C-GRID III SINGLE ROW STRAIGHT SHROUDED HEADER	MOLEX INCORPORATED	CAD FILENAME .	MATERIAL NO. SEE CHART
DRAFT WHERE APPLICABLE MUST REMAIN WITHIN DIMENSIONS		THIS DRAWING CONTAINS INFORMATION THAT IS PROPRIETARY TO MOLEX INCORPORATED AND SHOULD NOT BE USED WITHOUT WRITTEN PERMISSION.						SIZE C		

	10	9	8	7	6	5	4	3	2	1																																																																																																																																							
F	<table border="1"> <thead> <tr> <th rowspan="2">NO. OF CKTS</th> <th colspan="3">PART NUMBERS</th> </tr> <tr> <th>PLATING TYPE A</th> <th>PLATING TYPE E</th> <th>PLATING TYPE F</th> </tr> </thead> <tbody> <tr><td>1</td><td>90136-1101</td><td>90136-1201</td><td>90136-1301</td></tr> <tr><td>2</td><td>↑ -1102</td><td>↑ -1202</td><td>↑ -1302</td></tr> <tr><td>3</td><td>-1103</td><td>-1203</td><td>-1303</td></tr> <tr><td>4</td><td>-1104</td><td>-1204</td><td>-1304</td></tr> <tr><td>5</td><td>-1105</td><td>-1205</td><td>-1305</td></tr> <tr><td>6</td><td>-1106</td><td>-1206</td><td>-1306</td></tr> <tr><td>7</td><td>-1107</td><td>-1207</td><td>-1307</td></tr> <tr><td>8</td><td>-1108</td><td>-1208</td><td>-1308</td></tr> <tr><td>9</td><td>-1109</td><td>-1209</td><td>-1309</td></tr> <tr><td>10</td><td>-1110</td><td>-1210</td><td>-1310</td></tr> <tr><td>11</td><td></td><td></td><td></td></tr> <tr><td>12</td><td>-1112</td><td>-1212</td><td>-1312</td></tr> <tr><td>13</td><td>-1113</td><td>-1213</td><td>-1313</td></tr> <tr><td>14</td><td>-1114</td><td></td><td></td></tr> <tr><td>15</td><td>-1115</td><td>-1215</td><td>-1315</td></tr> <tr><td>16</td><td>-1116</td><td>-1216</td><td>-1316</td></tr> <tr><td>17</td><td></td><td></td><td></td></tr> <tr><td>18</td><td>-1118</td><td>-1218</td><td>-1318</td></tr> <tr><td>19</td><td></td><td>-1219</td><td>-1319</td></tr> <tr><td>20</td><td></td><td>-1220</td><td>-1320</td></tr> <tr><td>21</td><td></td><td></td><td></td></tr> <tr><td>22</td><td>-1122</td><td>-1222</td><td>-1322</td></tr> <tr><td>23</td><td></td><td></td><td></td></tr> <tr><td>24</td><td></td><td></td><td></td></tr> <tr><td>25</td><td>-1125</td><td>-1225</td><td>-1325</td></tr> <tr><td>26</td><td></td><td></td><td></td></tr> <tr><td>27</td><td></td><td></td><td></td></tr> <tr><td>28</td><td></td><td></td><td></td></tr> <tr><td>29</td><td></td><td></td><td></td></tr> <tr><td>30</td><td>-1130</td><td>-1230</td><td>-1330</td></tr> <tr><td>31</td><td></td><td></td><td></td></tr> <tr><td>32</td><td>90136-1132</td><td>90136-1232</td><td>90136-1332</td></tr> </tbody> </table>										NO. OF CKTS	PART NUMBERS			PLATING TYPE A	PLATING TYPE E	PLATING TYPE F	1	90136-1101	90136-1201	90136-1301	2	↑ -1102	↑ -1202	↑ -1302	3	-1103	-1203	-1303	4	-1104	-1204	-1304	5	-1105	-1205	-1305	6	-1106	-1206	-1306	7	-1107	-1207	-1307	8	-1108	-1208	-1308	9	-1109	-1209	-1309	10	-1110	-1210	-1310	11				12	-1112	-1212	-1312	13	-1113	-1213	-1313	14	-1114			15	-1115	-1215	-1315	16	-1116	-1216	-1316	17				18	-1118	-1218	-1318	19		-1219	-1319	20		-1220	-1320	21				22	-1122	-1222	-1322	23				24				25	-1125	-1225	-1325	26				27				28				29				30	-1130	-1230	-1330	31				32	90136-1132	90136-1232	90136-1332
NO. OF CKTS	PART NUMBERS																																																																																																																																																
	PLATING TYPE A	PLATING TYPE E	PLATING TYPE F																																																																																																																																														
1	90136-1101	90136-1201	90136-1301																																																																																																																																														
2	↑ -1102	↑ -1202	↑ -1302																																																																																																																																														
3	-1103	-1203	-1303																																																																																																																																														
4	-1104	-1204	-1304																																																																																																																																														
5	-1105	-1205	-1305																																																																																																																																														
6	-1106	-1206	-1306																																																																																																																																														
7	-1107	-1207	-1307																																																																																																																																														
8	-1108	-1208	-1308																																																																																																																																														
9	-1109	-1209	-1309																																																																																																																																														
10	-1110	-1210	-1310																																																																																																																																														
11																																																																																																																																																	
12	-1112	-1212	-1312																																																																																																																																														
13	-1113	-1213	-1313																																																																																																																																														
14	-1114																																																																																																																																																
15	-1115	-1215	-1315																																																																																																																																														
16	-1116	-1216	-1316																																																																																																																																														
17																																																																																																																																																	
18	-1118	-1218	-1318																																																																																																																																														
19		-1219	-1319																																																																																																																																														
20		-1220	-1320																																																																																																																																														
21																																																																																																																																																	
22	-1122	-1222	-1322																																																																																																																																														
23																																																																																																																																																	
24																																																																																																																																																	
25	-1125	-1225	-1325																																																																																																																																														
26																																																																																																																																																	
27																																																																																																																																																	
28																																																																																																																																																	
29																																																																																																																																																	
30	-1130	-1230	-1330																																																																																																																																														
31																																																																																																																																																	
32	90136-1132	90136-1232	90136-1332																																																																																																																																														
E																																																																																																																																																	
D																																																																																																																																																	
C																																																																																																																																																	
B																																																																																																																																																	
A																																																																																																																																																	

PART NO. SEE CHART
 DWG. NO. SDA-90136

NOTES
 1.FOR ASSY SEE SHEET 1
 2.FOR PLATING DETAILS SEE SDES 99000-0003



FOR PREVIOUS DRAWING ISSUES SEE MRI.

M SEE SHEET 1.

REVISIONS	DIMENSIONS SHOWN (METRIC) INCH	
	UNLESS OTHERWISE SPECIFIED TOLERANCES: ANGULAR ± 1/2°	
LTR	3 PLACE # . ---	(INCH)
	2 PLACE # . ---	(METRIC)
	1 PLACE # . ---	
DRAFT WHERE APPLICABLE MUST REMAIN WITHIN DIMENSIONS		
DESIGN DIMENSION <input checked="" type="checkbox"/> (MM) <input type="checkbox"/> IN.		
EQUIVALENT DIMENSION <input type="checkbox"/> (MM) <input checked="" type="checkbox"/> IN.		

DRWG BY KS
 CHK'D BY
 APP'D BY
 SCALE

REVISE ONLY ON CAD SYSTEM		SH.	REV.
CAD/CAM FILENAME SA90136X2 DCN	THIS DRAWING CONTAINS INFORMATION THAT IS PROPRIETARY TO MOLEX INC. & SHOULD NOT BE USED WITHOUT WRITTEN PERMISSION		
TITLE C-GRID III SINGLE ROW STRAIGHT SHROUDED HEADER			
MOLEX EUROPE		SHEET NO. 20F	DATE 28/ 9/87
PART NO. SEE CHART	DWG NO. SDA-90136	SIZE B	