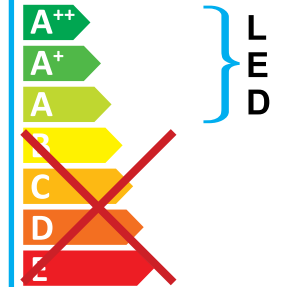
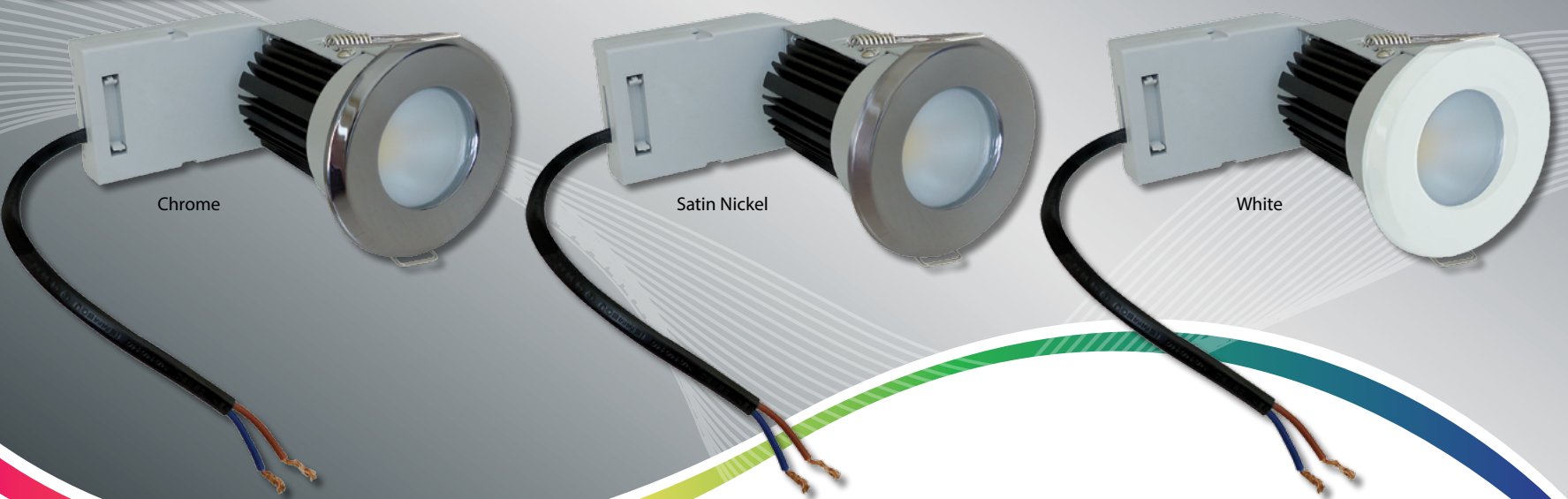


This luminaire contains built-in LED lamps.



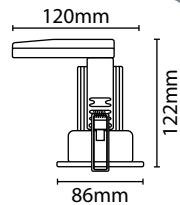
The lamps cannot be changed in the luminaire.

874/2012



7W IP65 FIRE RATED LED DOWNLIGHTS

- This luminaire contains built-in LED lamps and the lamps cannot be changed in the luminaire
- Pressed steel construction
- Integrated LED with frosted lens for even shadow free illumination
- Two spring mounting positions: accommodates different ceiling thicknesses. 65mm hole cut out size
- Loop in, Loop out quick connect push fit terminals
- Prewired with 250mm flex, which can be quickly removed allowing the installer to choose between termination within the driver housing or utilise their own termination arrangement using the flex provided
- Fire rated tested for individual 30, 60 and 90 min ceiling types



• M.O.M: 1 / O.P.Q: 4

Code	Colour	Wattage	Colour Temp.	Lumens	Avg. Rated Life (Hrs)	IP Rating	Energy Rating
LFR7WH	White	7W	3000K	434 lm	40,000 hrs	IP65	A
LFR7SN	Satin Nickel	7W	3000K	434 lm	40,000 hrs	IP65	A
LFR7CR	Polished Chrome	7W	3000K	434 lm	40,000 hrs	IP65	A
LFR7COOLWH	White	7W	4000K	568 lm	40,000 hrs	IP65	A+
LFR7COOLSN	Satin Nickel	7W	4000K	568 lm	40,000 hrs	IP65	A+
LFR7COOLCR	Polished Chrome	7W	4000K	568 lm	40,000 hrs	IP65	A+



LAMP SPECIFICATIONS:	WARMWHITE	COOLWHITE
Lumens total flux	434 lm	568 lm
Lumens 90° flux	394 lm	510 lm
Rated Wattage	7W	7W
Rated luminous flux	394 lm	510 lm
Nominal life time of the lamp	40,000 hrs	40,000 hrs
Colour temperature	3000K	4000K
Number of switching cycles before premature lamp failure	20,000	20,000
Warm-up time up to 60 % of the full light output	Instant full light	Instant full light
Dimmable	No	No
Lamp dimensions (mm)	122x86mm	122x86mm
Nominal beam angle	38°	38°
Rated power	7W	7W
Rated lamp lifetime	40,000 hrs	40,000 hrs
Lamp power factor	>0.5	>0.5
Lumen maintenance factor at end of nominal life	50%	50%
Starting time	0.8s	0.8s
Colour rendering	≥80	≥80
Colour consistency	Within 6 step Macadam ellipse	Within 6 step Macadam ellipse
Rated peak intensity	323cd	323.2cd
Rated beam angle	38°	38°