



MICRO SWITCH

FREEPORT, ILLINOIS, U.S.A.
A DIVISION OF HONEYWELL

FED. MFG. CODE 91929

CATALOG LISTING

DT-2R7II-A7

SWITCH-BASIC

DT-2R7II-A7

M

DRAWING NUMBER

8 9

8 8

ISSUE

8 8

REPLACES

RELEASE NO.

CHECK

CHECK

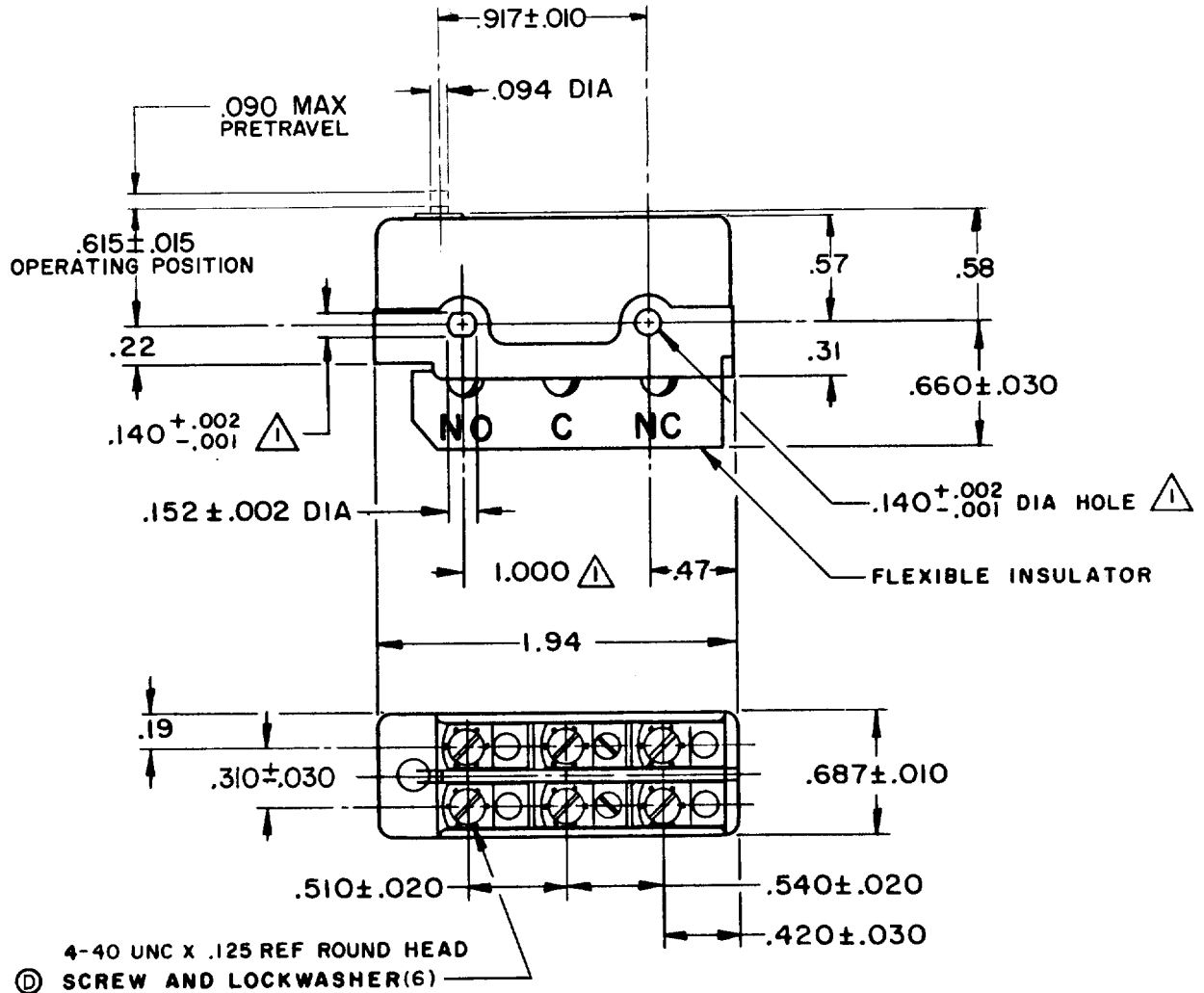
19 JUN 63

4 JUNE 63

4 JUNE 63

REVISIONS

A	CO17725	L E B	3 JUNE 63
B	CO19223	H B W	21 MAY 64
C	CO22672	W E G	4 APR 67
D	CO24941	M B S	2 DEC 68
E	CO26075	M B S	26 AUG 69
F	CO37528	C J H	31 AUG 76
G	CO39046	CO	39046
H	CO61634	G A S	16 SEPT 77
		T S K	17 JUL 87



NOTE -

△ - MOUNTING HOLES WILL ACCEPT PINS OR SCREWS OF .139 MAX DIA ON 1.000±.002 CENTERS

THIS DRAWING COVERS A PROPRIETARY ITEM AND IS THE PROPERTY OF MICRO SWITCH, A DIVISION OF MINNEAPOLIS-HONEYWELL REGULATOR CO. THIS DRAWING IS NOT TO BE COPIED OR USED WITHOUT THE APPROVAL OF MICRO SWITCH.

CHARACTERISTICS

OPERATING FORCE ----- 12-20 OZ

RELEASE FORCE ----- 2 OZ MIN

DIFFERENTIAL TRAVEL ----- .040-.060

OVERTRAVEL ----- .005 MIN

ELECTRICAL DATA

CONTACT ARRANGEMENT
D P D T

UNDERWRITERS' LAB. INC. LISTED RATING
-L59- 10 A - 125 OR 250 VAC
0.3 A - 125 VDC; 0.15 A - 250 VDC



SCALE FULL

DO NOT SCALE PRINT

UNLESS OTHERWISE NOTED

DIMENSIONS ARE IN INCHES

TOLERANCES ARE:

ONE PLACE	(.0)	±.030
TWO PLACE	(.00)	±.015
THREE PLACE	(.000)	±.005
ANGLES		±

WEIGHT .070 LB

FO-90378

DRAWN

L E B 4 JUNE 63