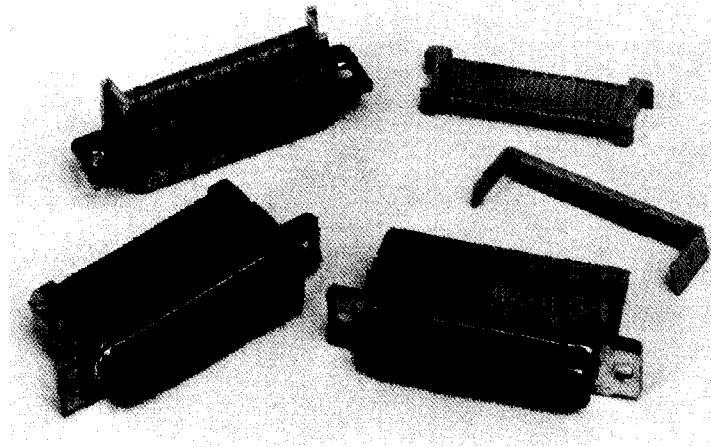


**D-SUBMINIATURE**



Amphenol 841 series connectors are suitable for compact requirements of modern peripheral equipment. Special contact design allows usage of standard .050" (1.27 mm) flat cable while maintaining the standard contact centers of .054" (1.37 mm). The one-piece universal hood provides three locking options: plastic latch for one-hand operation and quick disconnect, screw locking and metal spring latch locking. The hood accepts both straight and right angle cable entry for standard or jacketed cable.

- Compatible with MIL-C-24308 and IEC proposal 48 B (CO) 118
- Mass terminates to flat cable on .050" centers
- Mates with other D-Sub connectors
- Metal flange or all-plastic body
- Low profile
- RS-232 and RS-449 standard
- One-piece universal hood
- Strain relief

**specifications**

**Number of Contacts:**  
9, 15, 25, 37 both pin and socket

**Contact Spacing:**  
.054" (1.37mm) terminates standard .050" (1.27 mm) ribbon cable

**Contact Material:**  
Phosphor bronze

**Contact Plating:**  
Gold over nickel

**Insulator Material:**  
Gray, glass filled polycarbonate, UL 94 VO

**Mounting Flange:**  
Metal, detents on male only

**Wire Accomodation:**  
AWG 26 solid; AWG 28 stranded

**Standards:**  
RS-232 and RS-449

**Current Rating:**  
1 amp

**Voltage Rating:**  
25 VAC (VDE 0100 group A)

**Dielectric Withstanding voltage:**  
780 V eff.

**Insulation Resistance:**  
1000 m ohm min. at 500 VDC

**Contact Resistance:**  
10 m ohm max at 1 amp DC

**Operating Temperature:**  
- 25°C to +105°C (-67°F to +221°F)

**DIMENSIONS:** See next page

**ordering information**

**PLASTIC CONNECTOR**

No. of Contacts	PART NUMBERS	
	Receptacle	Plug
9	841-17-DEFR-B9S	841-17-DEFR-B9P
15	841-17-DAFR-B15S	841-17-DAFR-B15P
25	841-17-DBFR-B25S	841-17-DBFR-B25P
37	841-17-DCFR-B37S	841-17-DCFR-B37P

**METAL FLANGE CONNECTOR WITH 4-40 THREADED INSERT**

No. of Contacts	PART NUMBERS	
	Receptacle	Plug
9	841-17-DEFR-DA9S	841-17-DEFR-DA9P
15	841-17-DAFR-DA15S	841-17-DAFR-DA15P
25	841-17-DBFR-DA25S	841-17-DBFR-DA25P
37	-	841-17-DCFR-DA37P

**METAL FLANGE CONNECTOR**

No. of Contacts	PART NUMBERS	
	Receptacle	Plug
9	841-17-DEFR-A9S	841-17-DEFR-A9P
15	841-17-DAFR-A15S	841-17-DAFR-A15P
25	841-17-DBFR-A25S	841-17-DBFR-A25P
37	841-17-DCFR-A37S	841-17-DCFR-A37P

**50 POSITION METAL FLANGE CONNECTOR WITH 4-40 THREADED INSERT**

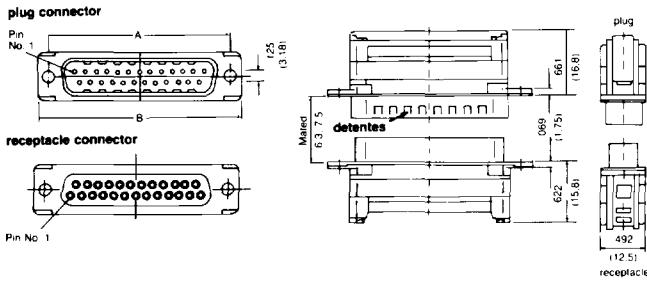
No. of Contacts	PART NUMBERS	
	Receptacle	Plug
50	841-17-DDFR-A50S	841-17-DDFR-A50P

**termination tooling:** See page 58

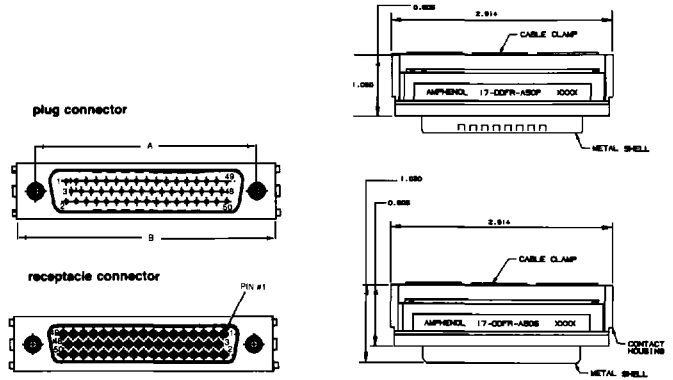
**D-SUBMINIATURE**

**dimensions**

9, 15, 25, 37 Position



50 Position

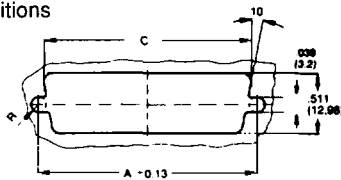


No. of Contacts	A	B
9	.984 (25.00)	1.205 (30.60)
15	1.311 (33.30)	1.531 (38.90)
25	1.852 (47.05)	2.078 (52.80)
37	2.500 (63.50)	2.718 (69.305)

No. of Contacts	A	B
50	2.406 (61.10)	2.914 (74.00)

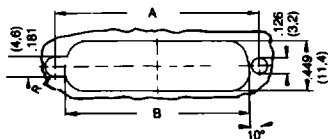
**panel cutouts**

Front or Rear Mount, 9 - 37 Positions



No. of Contacts	A	C
9	.984 (25.00)	.874 (22.20)
15	1.311 (33.30)	1.201 (30.50)
25	1.852 (47.05)	1.744 (44.30)
37	2.500 (63.50)	2.390 (60.70)

Rear Mount Only, 9 - 37 Positions



No. of Contacts	A	B
9	.984 (25.00)	.806 (20.5)
15	1.311 (33.30)	1.134 (28.80)
25	1.852 (47.05)	1.674 (42.50)
37	2.500 (63.50)	2.326 (59.10)

Rear Mount Only, 50 Positions

