

Double Row Terminal Blocks

General Information:

Double Row Terminal Blocks are available in many line-to-line spacings. Open and closed back designs are available as shown in the table below. Insulator bases are available in both phenolic and thermoplastic material. Each series has many hardware and marking options available.

Ratings and Standards:

The voltage ratings of terminal blocks are based upon the minimum spacing between electrically conductive parts line-to-line through air and over surface and line-to-ground through air and over surface.

Class A:

Service, including deadfront switchboards, panel boards and service equipment.

Class B:

Commercial appliances including business equipment and electronic data processing equipment.

Class C:

Industrial, general

Spacing Requirements (in inches)			
	Voltage	Through Air	Over Surface
Class A	51-150	0.500	0.750
	151-300	0.750	1.250
	301-600	1.000	2.000
Class B	51-150	0.063	0.063
	151-300	0.094	0.094
	301-600	0.375	0.500
Class C	51-150	0.125	0.250
	151-300	0.250	0.375
	301-600	0.375	0.500

Reference Chart:

Amps	Voltage Rating ¹		Series	Catalog Page #	Base Material	Bare-Wire Range ²	Screw Size	Inches L to L	# of Lines	Features
	Class B	Class C								
20	250	N/A	670A GP (100)	41	Phenolic	#12-22	6-32	.375	1-36	Closed Back
30	300	150	671 GP (200)	42	Phenolic	#14-22	6-32	.437	1-30	Closed Back
30	N/A	600	672 GP (300)	43	Phenolic	#10-14	8-32	.562	1-24	Closed Back
30	N/A	600	400	44	Phenolic	#10-22	10-32	.687	1-12	Closed Back
5	300	N/A	410	45	Phenolic	#18-20	2-56	.250	1-23	Open Back ¹
15	300	300	600	46	Phenolic	#14-22	5-40	.375	1-22	Open Back ¹
15	300	300	600A	47	Phenolic	#12-22	6-32	.375	1-22	Open Back ¹
20	300	300	601	48	Phenolic	#12-22	6-32	.437	1-23	Open Back ¹
20	N/A	150	801	48	Phenolic	#10	6-32	.437	1-23	Open Back ¹
30	300	300	602	49	Phenolic	#10-18	8-32	.562	1-26	Open Back ¹
30	N/A	150	802	49	Phenolic	#10	8-32	.562	1-26	Open Back ¹
50	600	600	603	50	Phenolic	#10-16	10-32	.687	1-12	Open Back ¹
70	600	600	604	51	Phenolic	#10-14	12-32	.875	1-8	Open Back ¹
90	600	600	605	52	Phenolic	#10-14	1/4-28	1.125	1-6	Open Back ¹
30	600	600	621 RZ	53	Plastic	#14-22	6-32	.437	1-30	Closed Back
20	300	150	670A RZ	54	Plastic	#12-22	6-32	.375	1-30	Closed Back
30	300	150	671 RZ	55	Plastic	#14-22	6-32	.437	1-30	Closed Back
30	600	600	672 RZ	56	Plastic	#12-14	8-32	.562	1-24	Closed Back

¹ Open back terminal blocks require an insulator strip to achieve voltage rating.

² Wire Range for Bare (unprepared) only. Prepared wire range (used with crimp type ring, fork or spade terminals) is dependent on the size of the crimp terminal applied and must not exceed the Amp rating specified.

Double Row Terminal Blocks

670A GP Series (100 Series)

Specifications:

- A Kulka® Brand
- 20 amps
- 250 volts, Class B
- Base, phenolic, 150°C (UL RTI)
- Terminals, plated brass
- Screws, steel, #6-32 phil-slot
- Closed back
- 1-36 poles at 3/8" centers
- Accepts lugs w/max width of .30"
- Bare wire range #12-#22 AWG

Standards:

- UL recognized file no. XCFR2.E62806
- CSA certified file no. LR19766
- CE compliant (IEC 60947-7-1)
- RoHS compliant



Catalog #	Alternate Catalog #	# of Poles	Dimensions	
			A	B
670A GP 01	101	1	1.03	0.75
670A GP 02	102	2	1.41	1.13
670A GP 03	103	3	1.78	1.50
670A GP 04	104	4	2.16	1.88
670A GP 05	105	5	2.53	2.25
670A GP 06	106	6	2.91	2.63
670A GP 07	107	7	3.28	3.00
670A GP 08	108	8	3.66	3.38
670A GP 09	109	9	4.03	3.75
670A GP 10	110	10	4.41	4.13
670A GP 11	111	11	4.78	4.50
670A GP 12	112	12	5.16	4.88
670A GP 13	113	13	5.53	5.25
670A GP 14	114	14	5.91	5.63
670A GP 15	115	15	6.28	6.00
670A GP 16	116	16	6.66	6.38
670A GP 17	117	17	7.03	6.75
670A GP 18	118	18	7.41	7.13
670A GP 19	119	19	7.78	7.50
670A GP 20	120	20	8.16	7.88
670A GP 21	121	21	8.53	8.25
670A GP 22	122	22	8.91	8.63
670A GP 23	123	23	9.28	9.00
670A GP 24	124	24	9.66	9.38
670A GP 25	125	25	10.03	9.75
670A GP 26	126	26	10.41	10.13
670A GP 27	127	27	10.78	10.50
670A GP 28	128	28	11.16	10.88
670A GP 29	129	29	11.53	11.25
670A GP 30	130	30	11.91	11.63
670A GP 31	131	31	12.28	12.00
670A GP 32	132	32	12.66	12.38
670A GP 33	133	33	13.03	12.75
670A GP 34	134	34	13.41	13.13
670A GP 35	135	35	13.78	13.50
670A GP 36	136	36	14.16	13.88

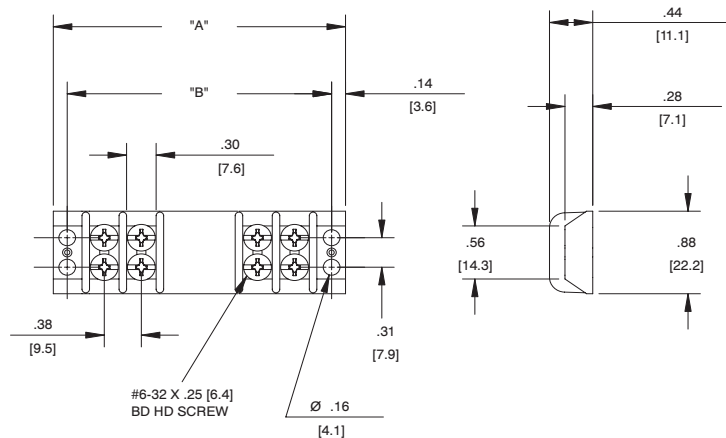
mm=dim X 25.4

Hardware Options:

(Hardware options may affect ratings - consult Customer Service)

Catalog #	Product Description	Page Reference
KT19	Full Quick Connect (0° Flat)	See page 73
KT20	Full Quick Connect (45° Bend)	
KT21	Full Quick Connect (90° Bend)	
KT25	Half Quick Connect (0° Flat)	
KT26	Half Quick Connect (45° Bend)	
KT27	Half Quick Connect (90° Bend)	See page 74
ST	Full Solder	
3/4 ST	Half Solder	
Y	Feed Thru Solder (.312)	
YSY	Feed Thru Solder (.500)	
J 600	Line-to-Line Jumper	Consult C/S
600RJ(S)	Multiple Position Jumper	
3000	Feed Thru Wire Wrap (.593)	Consult C/S
PSB	Phil-Slot Brass Screw	

Quick Connects: .020" x .110"



BARRIER
TERMINAL BLOCKS

Double Row Terminal Blocks

671 GP Series (200 Series)

Specifications:

- A Kulka® Brand
- 30 amps
- 150 volts Class C, 300 volts Class B
- Base, phenolic, 150°C (UL RTI)
- Screws, steel, #6-32 phil-slot
- Terminals, plated brass
- Closed back
- 1-30 poles at 7/16" centers
- Accepts lugs w/max width of .34"
- Bare wire range #12-#22 AWG

Standards:

- UL recognized file no. XCFR2.E62806
- CSA certified file no. LR19766
- CE compliant (IEC 60947-7-1)
- RoHS compliant



671 GP 13

Catalog #	Alternate Catalog #	# of Poles	Dimensions	
			A	B
671 GP 01	201	1	1.19	0.88
671 GP 02	202	2	1.62	1.31
671 GP 03	203	3	2.06	1.75
671 GP 04	204	4	2.50	2.19
671 GP 05	205	5	2.94	2.63
671 GP 06	206	6	3.37	3.06
671 GP 07	207	7	3.81	3.50
671 GP 08	208	8	4.25	3.94
671 GP 09	209	9	4.69	4.38
671 GP 10	210	10	5.12	4.81
671 GP 11	211	11	5.56	5.25
671 GP 12	212	12	6.00	5.69
671 GP 13	213	13	6.44	6.13
671 GP 14	214	14	6.87	6.56
671 GP 15	215	15	7.31	7.00
671 GP 16	216	16	7.75	7.44
671 GP 17	217	17	8.19	7.88
671 GP 18	218	18	8.62	8.31
671 GP 19	219	19	9.06	8.75
671 GP 20	220	20	9.50	9.19
671 GP 21	221	21	9.94	9.63
671 GP 22	222	22	10.37	10.06
671 GP 23	223	23	10.81	10.50
671 GP 24	224	24	11.25	10.94
671 GP 25	225	25	11.69	11.38
671 GP 26	226	26	12.12	11.81
671 GP 27	227	27	12.56	12.25
671 GP 28	228	28	13.00	12.69
671 GP 29	229	29	13.44	13.13
671 GP 30	230	30	13.87	13.56

mm=dim X 25.4

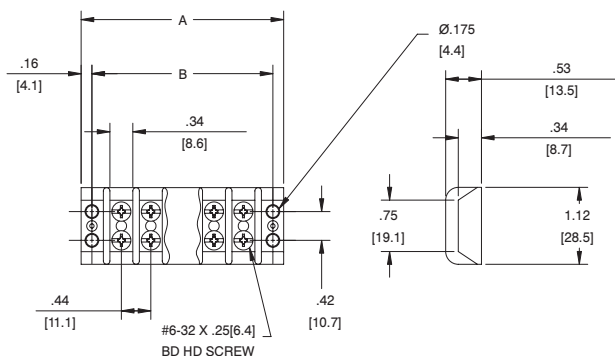
Hardware Options:

(Hardware options may affect ratings - consult Customer Service)

Catalog #	Product Description	Page Reference
KT37	Full Quick Connect (0° Flat)	See page 73
KT38	Full Quick Connect (45° Bend)	
KT39	Full Quick Connect (90° Bend)	
KT43	Half Quick Connect (0° Flat)	
KT44	Half Quick Connect (45° Bend)	
KT45	Half Quick Connect (90° Bend)	See page 77
ST	Full Solder	
3/4 ST	Half Solder	
Y	Feed Thru Solder (.437)	
YSY	Feed Thru Solder (.625)	See page 74
J 601	Line-to-Line Jumper	
601RJ(S)	Multiple Position Jumper	
3765	SEMS Pressure Saddle Screw	Consult C/S
3767	SEMS Pressure Saddle Screw with External Tooth Lock Washer ¹	
4000	Feed Thru Wire Wrap (.640)	Consult C/S
PSB	Phil-Slot Brass Screw	Consult C/S

Quick Connects: .032" x .250"

¹ Bare wire Range with SEMS screw of #12-22 AWG, Stranded Copper Only



BARRIER
TERMINAL BLOCKS

Double Row Terminal Blocks

672 GP Series (300 Series)

Specifications:

- A Kulka® Brand
- 30 amps
- 600 volts AC/DC, Class C
- Base, phenolic, 150°C (UL RTI)
- Terminals, plated brass
- Screws, steel, #8-32 phil-slot
- Closed back
- 1-24 poles at 9/16" centers
- Accepts lugs w/max width of .42"
- Bare wire range #10-#14 AWG

Standards:

- UL recognized, file no. XCFR2.E62806
- CSA certified, file no. LR19766
- CE compliant (IEC 60947-7-1)
- RoHS compliant



672 GP 03

Hardware Options:

(Hardware options may affect ratings - consult Customer Service)

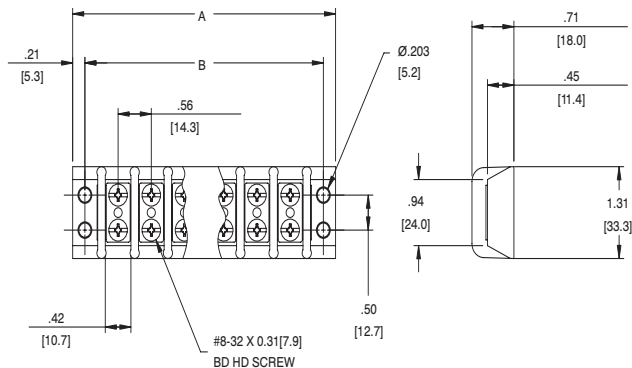
Catalog #	Alternate Catalog #	# of Poles	Dimensions	
			A	B
672 GP 01	301	1	1.54	1.13
672 GP 02	302	2	2.10	1.69
672 GP 03	303	3	2.66	2.25
672 GP 04	304	4	3.22	2.81
672 GP 05	305	5	3.79	3.38
672 GP 06	306	6	4.35	3.94
672 GP 07	307	7	4.91	4.50
672 GP 08	308	8	5.47	5.06
672 GP 09	309	9	6.04	5.63
672 GP 10	310	10	6.60	6.19
672 GP 11	311	11	7.16	6.75
672 GP 12	312	12	7.72	7.31
672 GP 13	313	13	8.29	7.88
672 GP 14	314	14	8.85	8.44
672 GP 15	315	15	9.41	9.00
672 GP 16	316	16	9.97	9.56
672 GP 17	317	17	10.54	10.13
672 GP 18	318	18	11.10	10.69
672 GP 19	319	19	11.66	11.25
672 GP 20	320	20	12.22	11.81
672 GP 21	321	21	12.79	12.38
672 GP 22	322	22	13.35	12.94
672 GP 23	323	23	13.91	13.50
672 GP 24	324	24	14.47	14.06

mm=dim X 25.4

Catalog #	Product Description	Page Reference
KT55	Full Quick Connect (0° Flat)	See page 73
KT56	Full Quick Connect (45° Bend)	
KT57	Full Quick Connect (90° Bend)	
KT61	Half Quick Connect (0° Flat)	
KT62	Half Quick Connect (45° Bend)	
KT63	Half Quick Connect (90° Bend)	See page 77
ST	Full Solder	
3/4 ST	Half Solder	
Y	Feed Thru Solder (.437)	
YSY	Feed Thru Solder (.625)	See page 74
J 602	Line-to-Line Jumper	
3786	SEMS Pressure Saddle Screw ¹	Consult C/S
SPSE	SEMS Pressure Saddle Screw with External Tooth Lock Washer ¹	
LWW	Feed Thru Wire Wrap (1.00)	Consult C/S
PSB	Phil-Slot Brass Screw	Consult C/S

Quick Connects: .032" x .250"

¹ Bare wire Range with SEMS screw of #10-22 AWG, Stranded Copper Only



Double Row Terminal Blocks

400 Series

Specifications:

- 30 amps
- 600 volts AC/DC, Class C
- Base, phenolic, 150°C (UL RTI)
- Terminals, plated brass
- Screws, steel, #10-32 phil-slot
- Closed back
- 1-12 poles at 11/16" centers
- Accepts lugs w/max width of .47"
- Bare wire range #10-#22 AWG

Standards:

- UL recognized, file no. XCFR2.E62806
- CSA certified, file no. LR19766
- CE compliant (IEC 60947-7-1)
- RoHS compliant



406

Catalog #	# of Poles	Dimensions	
		A	B
401	1	1.81	1.38
402	2	2.50	2.06
403	3	3.19	2.75
404	4	3.88	3.44
405	5	4.56	4.12
406	6	5.25	4.81
407	7	5.94	5.50
408	8	6.62	6.19
409	9	7.31	6.88
410	10	8.00	7.56
411	11	8.68	8.25
412	12	9.37	8.94

mm=dim X 25.4

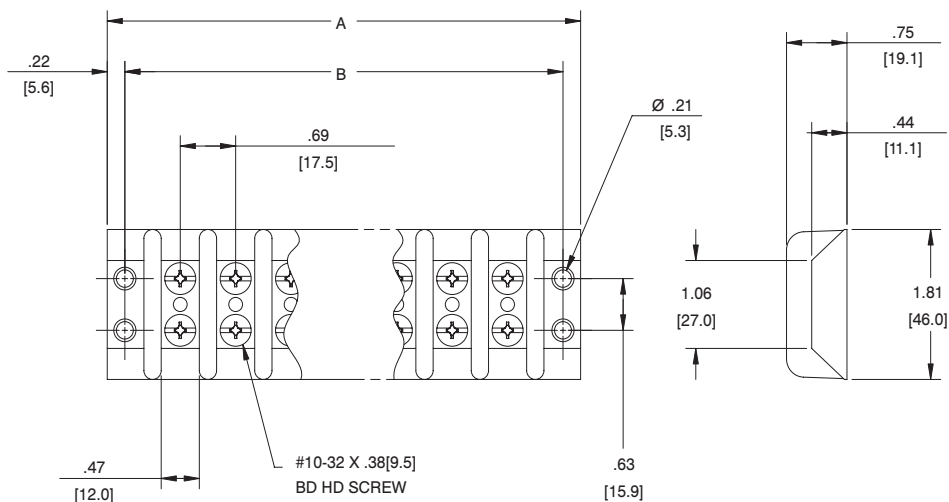
Hardware Options:

(Hardware options may affect ratings - consult Customer Service)

Catalog #	Product Description	Page Reference
KT67	Full Quick Connect (0° Flat)	See page 73
KT68	Full Quick Connect (45° Bend)	
KT69	Full Quick Connect (90° Bend)	
KT64	Half Quick Connect (0° Flat)	
KT65	Half Quick Connect (45° Bend)	
KT66	Half Quick Connect (90° Bend)	
J 603	Line-to-Line Jumper	See page 74
SPSE	SEMS Pressure Saddle Screw ¹	Consult C/S
PSB	Phil-Slot Brass Screw	Consult C/S

Quick Connects: .032" x .250"

¹ Bare wire Range with SEMS screw of #10-22 AWG, Stranded Copper Only



BARRIER
TERMINAL BLOCKS

Double Row Terminal Blocks

410 GP Series

Specifications:

- A Kulka® Brand
- 5 amps
- 300 volts AC/DC, Class B
- Base, phenolic, 150°C (UL RTI)
- Terminals, plated brass
- Screws, brass, #2-56 phil-slot
- Open back design (insulator strip required for voltage rating - see page 112)
- 1-23 poles at 1/4" centers
- Accepts lugs w/max width of .19"
- Bare wire range #18-#20 AWG

Standards:

- UL recognized, file no. XCFR2.E47811
- CSA certified, file no. LR19766
- CE compliant (IEC 60947-7-1)
- RoHS compliant



410 GP 06 PSB

Catalog #	# of Poles	Dimensions	
		A	B
410 GP 01 PSB	1	0.75	0.50
410 GP 02 PSB	2	1.00	0.75
410 GP 03 PSB	3	1.25	1.00
410 GP 04 PSB	4	1.50	1.25
410 GP 05 PSB	5	1.75	1.50
410 GP 06 PSB	6	2.00	1.75
410 GP 07 PSB	7	2.25	2.00
410 GP 08 PSB	8	2.50	2.25
410 GP 09 PSB	9	2.75	2.50
410 GP 10 PSB	10	3.00	2.75
410 GP 11 PSB	11	3.25	3.00
410 GP 12 PSB	12	3.50	3.25
410 GP 13 PSB	13	3.75	3.50
410 GP 14 PSB	14	4.00	3.75
410 GP 15 PSB	15	4.25	4.00
410 GP 16 PSB	16	4.50	4.25
410 GP 17 PSB	17	4.75	4.50
410 GP 18 PSB	18	5.00	4.75
410 GP 19 PSB	19	5.25	5.00
410 GP 20 PSB	20	5.50	5.25
410 GP 21 PSB	21	5.75	5.50
410 GP 22 PSB	22	6.00	5.75
410 GP 23 PSB	23	6.25	6.00

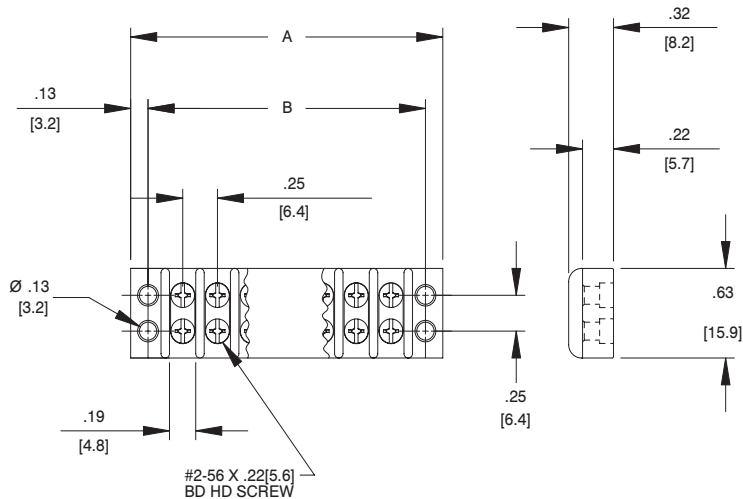
mm=dim X 25.4

Hardware Options:

(Hardware options may affect ratings - consult Customer Service)

Catalog #	Product Description	Page Reference
ST	Full Solder	See page 77
3/4 ST	Half Solder	
Y	Feed Thru Solder (.437)	
J 410	Line-to-Line Jumper	See page 74
1921	Printed Circuit Pin (.109)	Consult C/S

Quick Connects: .020" x .110"



BARRIER
TERMINAL BLOCKS

Double Row Terminal Blocks

600 GP Series

Specifications:

- A Kulka® Brand
- 15 amps
- 300 volts AC/DC, Class B/C
- Base, phenolic, 150°C (UL RTI)
- Terminals, plated brass
- Screws, brass, #5-40 phil-slot
- Open Back Design (insulator strip required for voltage rating - see page 112)
- 1-22 poles at 3/8" centers
- Accepts lugs w/max width of .30"
- Bare wire range #14-#22 AWG

Standards:

- UL recognized, file no. XCFR2.E47811
- CSA certified, file no. LR19766
- CE compliant (IEC 60947-7-1)
- RoHS compliant



600 GP 07 PSB

Catalog #	# of Poles	Dimensions	
		A	B
600 GP 01 PSB	1	1.03	0.75
600 GP 02 PSB	2	1.41	1.13
600 GP 03 PSB	3	1.78	1.50
600 GP 04 PSB	4	2.16	1.88
600 GP 05 PSB	5	2.53	2.25
600 GP 06 PSB	6	2.91	2.63
600 GP 07 PSB	7	3.28	3.00
600 GP 08 PSB	8	3.66	3.38
600 GP 09 PSB	9	4.03	3.75
600 GP 10 PSB	10	4.41	4.13
600 GP 11 PSB	11	4.78	4.50
600 GP 12 PSB	12	5.16	4.88
600 GP 13 PSB	13	5.53	5.25
600 GP 14 PSB	14	5.91	5.63
600 GP 15 PSB	15	6.28	6.00
600 GP 16 PSB	16	6.66	6.38
600 GP 17 PSB	17	7.03	6.75
600 GP 18 PSB	18	7.41	7.13
600 GP 19 PSB	19	7.78	7.50
600 GP 20 PSB	20	8.16	7.88
600 GP 21 PSB	21	8.53	8.25
600 GP 22 PSB	22	8.91	8.63

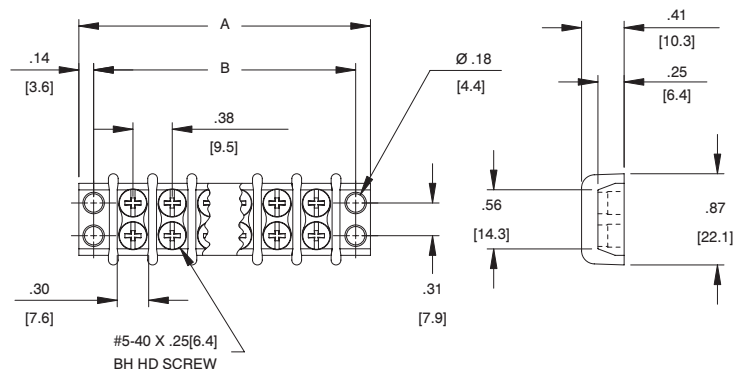
mm=dim X 25.4

Hardware Options:

(Hardware options may affect ratings - consult Customer Service)

Catalog #	Product Description	Page Reference
KT19	Full Quick Connect (0° Flat)	See Page 73
KT20	Full Quick Connect (45° Bend)	
KT21	Full Quick Connect (90° Bend)	
KT25	Half Quick Connect (0° Flat)	
KT26	Half Quick Connect (45° Bend)	
KT27	Half Quick Connect (90° Bend)	
ST	Full Solder	See Page 77
3/4 ST	Half Solder	
Y	Feed Thru Solder (.312)	
YSY	Feed Thru Solder (.500)	
Z	Lug Over the Side (.625)	See Page 74
J 600	Line-to-Line Jumper	
600 RJ(S)	Multiple Position Jumper	See Page 75
2004	Feed Thru Solder	

Quick Connects: .020" x .187"



BARRIER
TERMINAL BLOCKS

Double Row Terminal Blocks

600A GP Series

Specifications:

- A Kulka® Brand
- 15 amps
- 300 volts AC/DC, Class B/C
- Base, phenolic, 150°C (UL RTI)
- JJ (GDI-30F) material available
- Terminals, plated brass
- Screws, brass, #5-40 phil-slot
- Open back design (insulator strip required for voltage rating - see page 112)
- 1-22 poles at 3/8" centers
- Accepts lugs w/max width of .30"
- Bare wire range #12-#22 AWG

Standards:

- UL recognized, file no. XCFR2.E47811
- CSA certified, file no. LR19766
- CE compliant (IEC 60947-7-1)
- RoHS compliant



600A GP 06

Catalog #	# of Poles	Dimensions	
		A	B
600A GP 01	1	1.03	0.75
600A GP 02	2	1.41	1.13
600A GP 03	3	1.78	1.50
600A GP 04	4	2.16	1.88
600A GP 05	5	2.53	2.25
600A GP 06	6	2.91	2.63
600A GP 07	7	3.28	3.00
600A GP 08	8	3.66	3.38
600A GP 09	9	4.03	3.75
600A GP 10	10	4.41	4.13
600A GP 11	11	4.78	4.50
600A GP 12	12	5.16	4.88
600A GP 13	13	5.53	5.25
600A GP 14	14	5.91	5.63
600A GP 15	15	6.28	6.00
600A GP 16	16	6.66	6.38
600A GP 17	17	7.03	6.75
600A GP 18	18	7.41	7.13
600A GP 19	19	7.78	7.50
600A GP 20	20	8.16	7.88
600A GP 21	21	8.53	8.25
600A GP 22	22	8.91	8.63

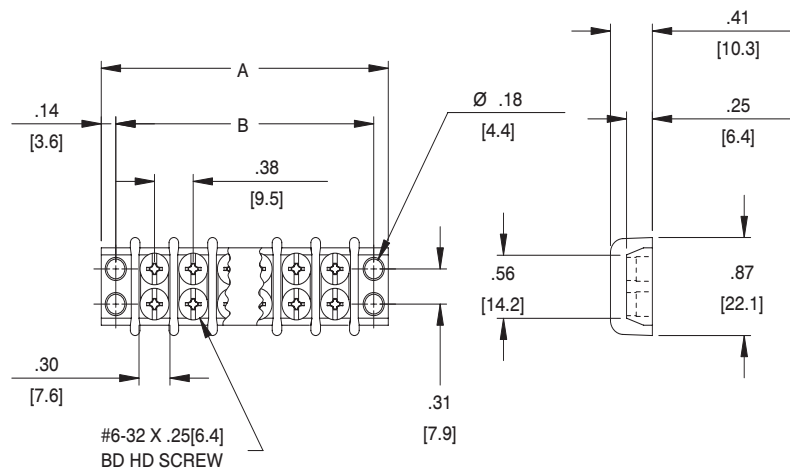
mm=dim X 25.4

Hardware Options:

(Hardware options may affect ratings - consult Customer Service)

Catalog #	Product Description	Page Reference
KT19	Full Quick Connect (0° Flat)	See Page 73
KT20	Full Quick Connect (45° Bend)	
KT21	Full Quick Connect (90° Bend)	
KT25	Half Quick Connect (0° Flat)	
KT26	Half Quick Connect (45° Bend)	
KT27	Half Quick Connect (90° Bend)	
ST	Full Solder	
3/4 ST	Half Solder	
Y	Feed Thru Solder (.312)	
YSY	Feed Thru Solder (.500)	
Z	Lug Over the Side (.625)	
J 600	Line-to-Line Jumper	See Page 74
600 RJ(S)	Multiple Position Jumper	
3860	Wire Clamp Screw, Brass	
3865	Wire Clamp Screw	
2002	Stud	See Page 75
PSB	Phil-Slot Brass Screw	Consult C/S

Quick Connects: .020" x .187"



BARRIER
TERMINAL BLOCKS

Double Row Terminal Blocks

601 / 801 GP Series

Specifications:

- A Kulka® Brand
- 20 amps
- 300 volts AC/DC, Class B/C
- 801 series (riveted construction) 150 volts AC/DC, class-C
- Base, phenolic, 150°C (UL RTI)
- JJ (GDI-30F) material available
- Terminals, plated brass
- Screws, steel, #6-32 phil-slot
- Open back design (insulator strip required for voltage rating - see page 112)
- 1-23 poles at 7/16" centers
- Accepts lugs w/max width of .34"
- Bare wire range #12-#22 AWG

Standards:

- UL recognized, file no. XCFR2.E47811
- CSA certified, file no. LR19766
- CE compliant (IEC 60947-7-1)
- RoHS compliant



601 GP 06

Hardware Options:

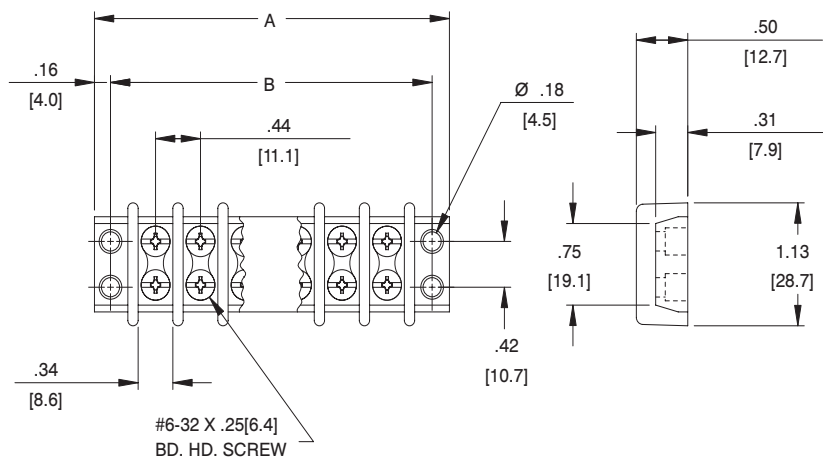
(Hardware options may affect ratings - consult Customer Service)

Catalog #	# of Poles	Dimensions	
		A	B
601 GP 01	1	1.19	0.88
601 GP 02	2	1.62	1.31
601 GP 03	3	2.06	1.75
601 GP 04	4	2.50	2.19
601 GP 05	5	2.94	2.63
601 GP 06	6	3.37	3.06
601 GP 07	7	3.81	3.50
601 GP 08	8	4.25	3.94
601 GP 09	9	4.69	4.38
601 GP 10	10	5.12	4.81
601 GP 11	11	5.56	5.25
601 GP 12	12	6.00	5.69
601 GP 13	13	6.44	6.13
601 GP 14	14	6.87	6.56
601 GP 15	15	7.31	7.00
601 GP 16	16	7.75	7.44
601 GP 17	17	8.19	7.88
601 GP 18	18	8.62	8.31
601 GP 19	19	9.06	8.75
601 GP 20	20	9.50	9.19
601 GP 21	21	9.94	9.63
601 GP 22	22	10.37	10.06
601 GP 23	23	10.81	10.50

mm=dim X 25.4

Catalog #	Product Description	Page Reference
KT37	Full Quick Connect (0° Flat)	See Page 73
KT38	Full Quick Connect (45° Bend)	
KT39	Full Quick Connect (90° Bend)	
KT43	Half Quick Connect (0° Flat)	
KT44	Half Quick Connect (45° Bend)	See Page 77
KT45	Half Quick Connect (90° Bend)	
ST	Full Solder	
3/4 ST	Half Solder	See Page 74
Y	Feed Thru Solder (.422)	
YSY	Feed Thru Solder (.687)	
J 601	Line-to-Line Jumper	See Page 75
601 RJ(S)	Multiple Position Jumper	
3765	Wire Clamp Screw	
3760	Wire Clamp Screw	
2102	Stud	See Page 75
2104	Feed Thru Solder	
2108	Individual Screw Terminals	
PSB	Phil-Slot Brass Screw	Consult C/S

Quick Connects: .020" x .187"



Double Row Terminal Blocks

602 / 802 GP Series

Specifications:

- A Kulka® Brand
- 30 amps
- 300 volts AC/DC, Class B/C
- 802 series (riveted construction), 150 volts AC/DC, Class-C
- Base, phenolic, 150°C (UL RTI)
- JJ (GDI-30F) material available
- Terminals, plated brass
- Screws, steel, #8-32 phil-slot
- Open back design (insulator strip required for voltage rating - see page 112)
- 1-26 poles at 9/16" centers
- Accepts lugs w/max width of .44"
- Bare wire range #10-#18 AWG

Standards:

- UL recognized, file no. XCFR2.E47811
- CSA certified, file no. LR19766
- CE compliant (IEC 60947-7-1)
- RoHS compliant



602 GP 06

Hardware Options:

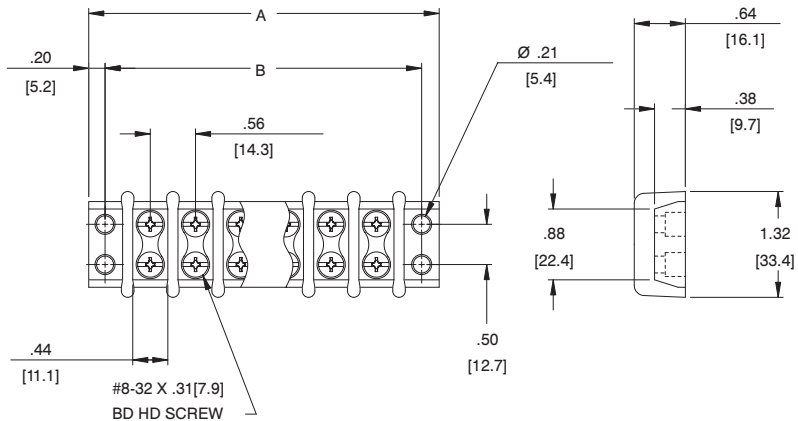
(Hardware options may affect ratings - consult Customer Service)

Catalog #	# of Poles	Dimensions	
		A	B
602 GP 01	1	1.54	1.13
602 GP 02	2	2.10	1.69
602 GP 03	3	2.66	2.25
602 GP 04	4	3.22	2.81
602 GP 05	5	3.79	3.38
602 GP 06	6	4.35	3.94
602 GP 07	7	4.91	4.50
602 GP 08	8	5.47	5.06
602 GP 09	9	6.04	5.63
602 GP 10	10	6.60	6.19
602 GP 11	11	7.16	6.75
602 GP 12	12	7.72	7.31
602 GP 13	13	8.29	7.88
602 GP 14	14	8.85	8.44
602 GP 15	15	9.41	9.00
602 GP 16	16	9.97	9.56
602 GP 17	17	10.54	10.13
602 GP 18	18	11.10	10.69
602 GP 19	19	11.66	11.25
602 GP 20	20	12.22	11.81
602 GP 21	21	12.79	12.38
602 GP 22	22	13.35	12.94
602 GP 23	23	13.91	13.50
602 GP 24	24	14.47	14.06
602 GP 25	25	15.04	14.63
602 GP 26	26	15.60	15.19

mm=dim X 25.4

Catalog #	Product Description	Page Reference
KT55	Full Quick Connect (0° Flat)	See Page 73
KT56	Full Quick Connect (45° Bend)	
KT57	Full Quick Connect (90° Bend)	
KT61	Half Quick Connect (0° Flat)	
KT62	Half Quick Connect (45° Bend)	
KT63	Half Quick Connect (90° Bend)	
ST	Full Solder	See Page 77
3/4 ST	Half Solder	
Y	Feed Thru Solder (.500)	
YSY	Feed Thru Solder (.672)	
Z	Lug over the Side (.609)	
J 602	Line-to-Line Jumper	See Page 74
3786	Wire Clamp Screw	
2202	Stud	See Page 75
PSB	Phil-Slot Brass Screw	Consult C/S

Quick Connects: .032" x .250"



BARRIER
TERMINAL BLOCKS

Double Row Terminal Blocks

603 GP Series

Specifications:

- A Kulka® Brand
- 50 amps
- 600 volts AC/DC, Class B/C
- Base, phenolic, 150°C (UL RTI)
- JJ (GDI-30F) material available
- Terminals, plated brass
- Screws, steel, #10-32 phil-slot
- Open back design (insulator strip required for voltage rating - see page 112)
- 1-12 poles at 11/16" centers
- Accepts lugs w/max width of .47"
- Bare wire range #10-#16 AWG

Standards:

- UL recognized, file no. XCFR2.E47811
- CSA certified, file no. LR19766
- CE compliant (IEC 60947-7-1)
- RoHS compliant



603 GP 06

Catalog #	# of Poles	Dimensions	
		A	B
603 GP 01	1	1.81	1.38
603 GP 02	2	2.50	2.06
603 GP 03	3	3.19	2.75
603 GP 04	4	3.88	3.44
603 GP 05	5	4.56	4.12
603 GP 06	6	5.25	4.81
603 GP 07	7	5.94	5.50
603 GP 08	8	6.62	6.19
603 GP 09	9	7.31	6.88
603 GP 10	10	8.00	7.56
603 GP 11	11	8.68	8.25
603 GP 12	12	9.37	8.94

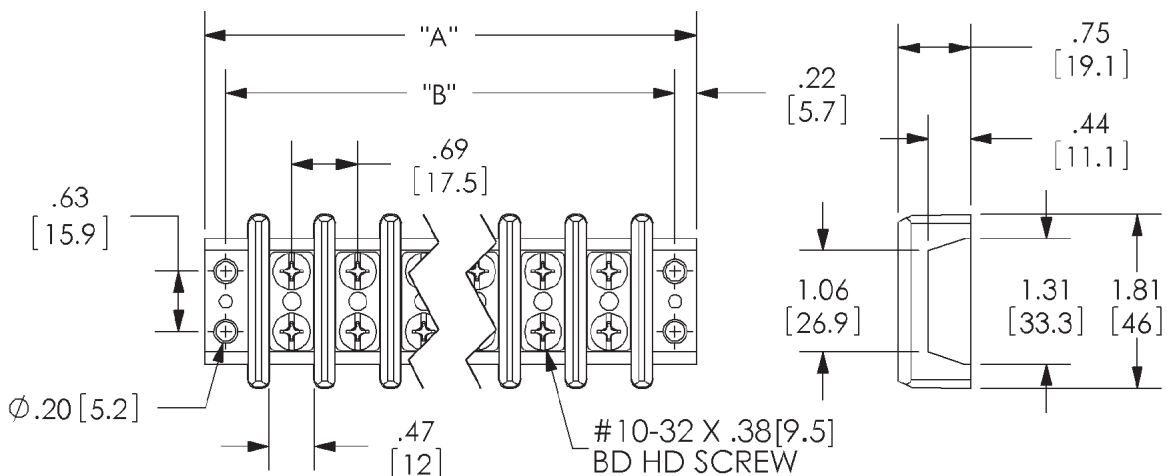
mm=dim X 25.4

Hardware Options:

(Hardware options may affect ratings - consult Customer Service)

Catalog #	Product Description	Page Reference
KT67	Full Quick Connect (0° Flat)	See Page 73
KT68	Full Quick Connect (45° Bend)	
KT69	Full Quick Connect (90° Bend)	
KT64	Half Quick Connect (0° Flat)	
KT65	Half Quick Connect (45° Bend)	
KT66	Half Quick Connect (90° Bend)	
Y	Feed Thru Solder (.60)	See Page 77
J 603	Line-to-Line Jumper	See Page 74
2302	Stud	See Page 75
PSB	Phil-Slot Brass Screw	Consult C/S

Quick Connects: .032" x .250"



Double Row Terminal Blocks

604 GP Series

Specifications:

- A Kulka® Brand
- 70 amps
- 600 volts AC/DC, Class B/C
- Base, phenolic, 150°C (UL RTI)
- JJ (GDI-30F) material available
- Terminals, plated brass
- Screws, brass, #12-32 phil-slot
- Open back design (insulator strip required for voltage rating - see page 112)
- 1-8 poles at 7/8" centers
- Accepts lugs w/max width of .58"
- Bare wire range #10-#12 AWG

Standards:

- UL recognized, file no. XCFR2.E47811
- CSA certified, file no. LR19766
- CE compliant (IEC 60947-7-1)
- RoHS compliant



604 GP 04 PSB

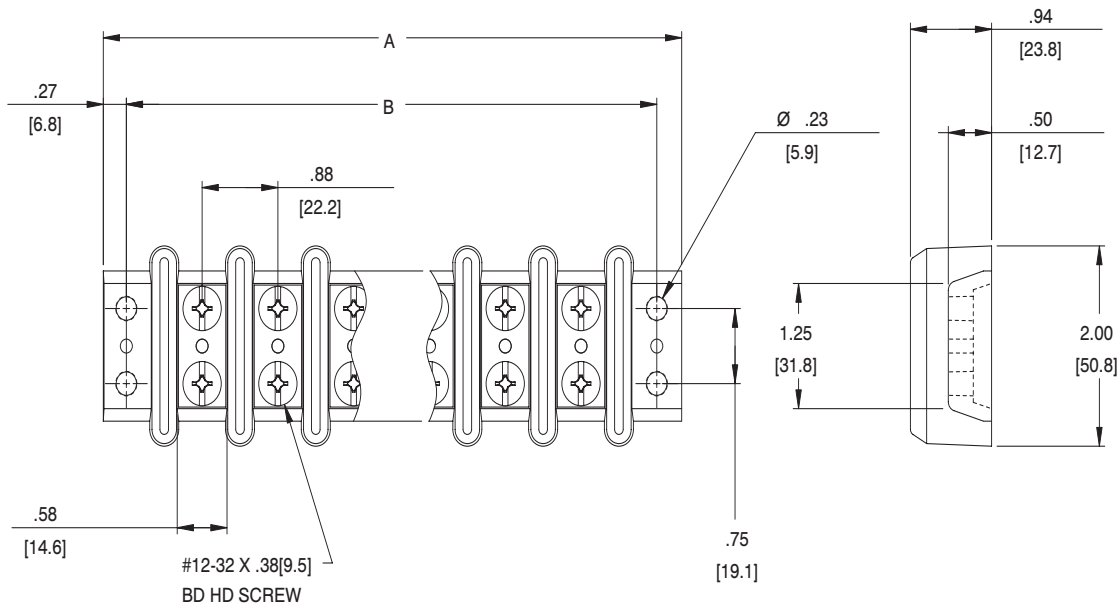
Catalog #	# of Poles	Dimensions	
		A	B
604 GP 01 PSB	1	2.28	1.75
604 GP 02 PSB	2	3.16	2.63
604 GP 03 PSB	3	4.03	3.50
604 GP 04 PSB	4	4.91	4.38
604 GP 05 PSB	5	5.78	5.25
604 GP 06 PSB	6	6.66	6.13
604 GP 07 PSB	7	7.53	7.00
604 GP 08 PSB	8	8.41	7.88

Hardware Options:

(Hardware options may affect ratings - consult Customer Service)

Catalog #	Product Description	Page Reference
J 604	Line-to-Line Jumper	See Page 74
2402	Stud 10-32 Brass (.43 H) Nuts included	See Page 75

mm=dim X 25.4



BARRIER
TERMINAL BLOCKS

Double Row Terminal Blocks

605 GP Series

Specifications:

- A Kulka® Brand
- 90 amps
- 600 volts AC/DC, Class B/C
- Base, phenolic, 150°C (UL RTI)
- JJ (GDI-30F) material available
- Terminals, plated brass
- Screws, brass, 1/4-28 slotted
- Open back design (insulator strip required for voltage rating - see page 112)
- 1-6 poles at 1 1/8" centers
- Accepts lugs w/max width of .67"
- Bare wire range #10-#14 AWG

Standards:

- UL recognized, file no. XCFR2.E47811
- CSA certified, file no. LR19766
- CE compliant (IEC 60947-7-1)
- RoHS compliant



605 GP 03 SLB

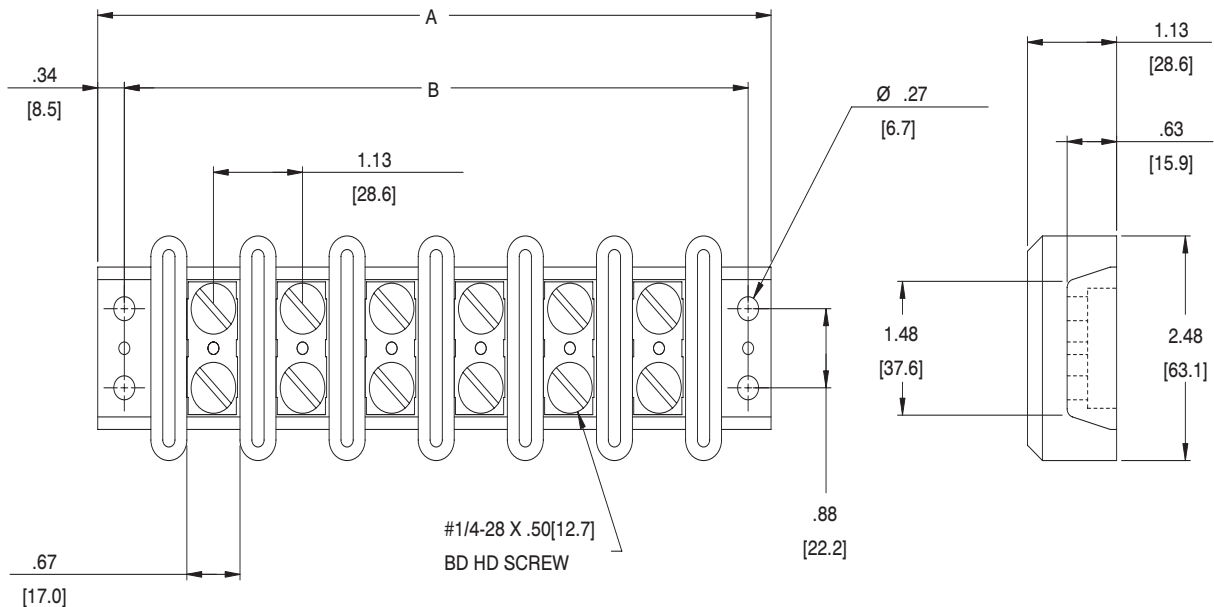
Catalog #	# of Poles	Dimensions	
		A	B
605 GP 01 SLB	1	2.88	2.25
605 GP 02 SLB	2	4.00	3.38
605 GP 03 SLB	3	5.13	4.50
605 GP 04 SLB	4	6.25	5.63
605 GP 05 SLB	5	7.38	6.75
605 GP 06 SLB	6	8.50	7.88

mm=dim X 25.4

Hardware Options:

(Hardware options may affect ratings - consult Customer Service)

Catalog #	Product Description	Page Reference
J 605	Line-to-Line Jumper	See Page 74
2502	Stud 1/4-28 Brass (.750 H) Nuts included	See Page 75
PSB	Phil-Slot Brass Screw	Consult C/S



BARRIER
TERMINAL BLOCKS

Double Row Terminal Blocks

621 RZ Series

Specifications:

- 30 amps
- 600 volts Class B/C
- Base, thermoplastic, 125°C (UL RTI)
- Screws, steel, #6-32 phil-slot
- Terminals, plated brass
- Closed back
- 1-30 poles at 7/16" centers
- Accepts lugs w/max width of .33"
- Bare wire range #14-#22 AWG

Standards:

- UL recognized file no. XCFR2.E62806
- CSA certified file no. LR19766
- CE compliant (IEC 60947-7-1)
- RoHS compliant



621 RZ 03

Catalog #	# of Poles	Dimensions	
		A	B
621 RZ 01	1	1.19	0.88
621 RZ 02	2	1.62	1.31
621 RZ 03	3	2.06	1.75
621 RZ 04	4	2.50	2.19
621 RZ 05	5	2.94	2.63
621 RZ 06	6	3.37	3.06
621 RZ 07	7	3.81	3.50
621 RZ 08	8	4.25	3.94
621 RZ 09	9	4.69	4.38
621 RZ 10	10	5.12	4.81
621 RZ 11	11	5.56	5.25
621 RZ 12	12	6.00	5.69
621 RZ 13	13	6.44	6.13
621 RZ 14	14	6.87	6.56
621 RZ 15	15	7.31	7.00
621 RZ 16	16	7.75	7.44
621 RZ 17	17	8.19	7.88
621 RZ 18	18	8.62	8.31
621 RZ 19	19	9.06	8.75
621 RZ 20	20	9.50	9.19
621 RZ 21	21	9.94	9.63
621 RZ 22	22	10.37	10.06
621 RZ 23	23	10.81	10.50
621 RZ 24	24	11.25	10.94
621 RZ 25	25	11.69	11.38
621 RZ 26	26	12.12	11.81
621 RZ 27	27	12.56	12.25
621 RZ 28	28	13.00	12.69
621 RZ 29	29	13.44	13.13
621 RZ 30	30	13.87	13.56

mm=dim X 25.4

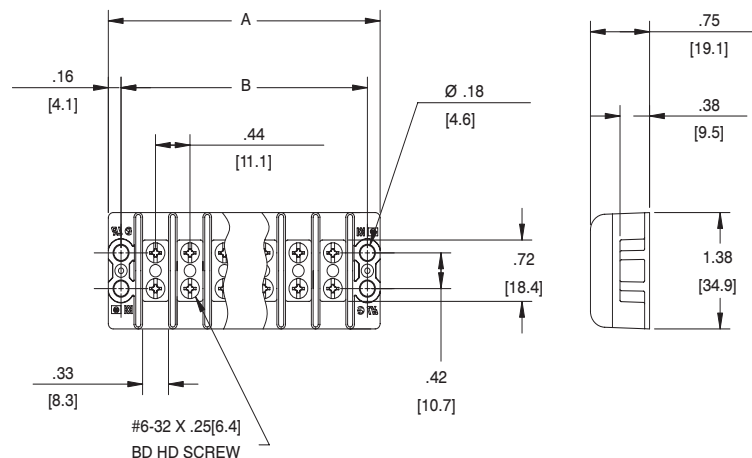
Hardware Options:

(Hardware options may affect ratings - consult Customer Service)

Catalog #	Product Description	Page Reference
KT37	Full Quick Connect (0° Flat)	See Page 73
KT38	Full Quick Connect (45° Bend)	
KT39	Full Quick Connect (90° Bend)	
KT43	Half Quick Connect (0° Flat)	
KT44	Half Quick Connect (45° Bend)	
KT45	Half Quick Connect (90° Bend)	
ST	Full Solder	See Page 77
3/4 ST	Half Solder	
J 621	Line-to-Line Jumper	See Page 74
601RJ(S)	Multiple Position Jumper	
3765	SEMS Pressure Saddle Screw ¹	
3767	SEMS Pressure Saddle Screw with External Tooth Lock Washer ¹	Consult C/S
PSB	Phil-Slot Brass Screw	Consult C/S

Quick Connects: .032" x .250"

¹ Bare wire Range with SEMS screw of #12-22 AWG, Stranded Copper Only



Double Row Terminal Blocks

670A RZ Series

Specifications:

- 20 amps
- 150 volts Class-C, 300V Class B
- Base, thermoplastic, 130°C (UL RTI)
- Screws, steel, #6-32 phil-slot
- Terminals, plated brass
- Closed back
- 1-30 poles at 3/8" centers
- Accepts lugs w/max width of .31"
- Bare wire range #12-#22 AWG

Standards:

- UL recognized file no. XCFR2.E47811
- CSA certified file no. LR19766
- CE compliant (IEC 60947-7-1)
- RoHS compliant



670A RZ 16

Catalog #	# of Poles	Dimensions	
		A	B
670A RZ 01	1	1.03	0.75
670A RZ 02	2	1.41	1.13
670A RZ 03	3	1.78	1.50
670A RZ 04	4	2.16	1.88
670A RZ 05	5	2.53	2.25
670A RZ 06	6	2.91	2.63
670A RZ 07	7	3.28	3.00
670A RZ 08	8	3.66	3.38
670A RZ 09	9	4.03	3.75
670A RZ 10	10	4.41	4.13
670A RZ 11	11	4.78	4.50
670A RZ 12	12	5.16	4.88
670A RZ 13	13	5.53	5.25
670A RZ 14	14	5.91	5.63
670A RZ 15	15	6.28	6.00
670A RZ 16	16	6.66	6.38
670A RZ 17	17	7.03	6.75
670A RZ 18	18	7.41	7.13
670A RZ 19	19	7.78	7.50
670A RZ 20	20	8.16	7.88
670A RZ 21	21	8.53	8.25
670A RZ 22	22	8.91	8.63
670A RZ 23	23	9.28	9.00
670A RZ 24	24	9.66	9.38
670A RZ 25	25	10.03	9.75
670A RZ 26	26	10.41	10.13
670A RZ 27	27	10.78	10.50
670A RZ 28	28	11.16	10.88
670A RZ 29	29	11.53	11.25
670A RZ 30	30	11.91	11.63

mm=dim X 25.4

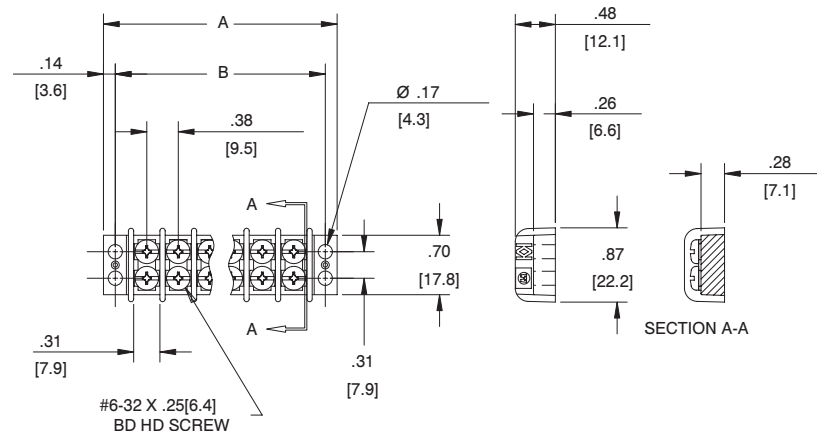
Hardware Options:

(Hardware options may affect ratings - consult Customer Service)

Catalog #	Product Description	Page Reference
KT19	Full Quick Connect (0° Flat)	See page 73
KT20	Full Quick Connect (45° Bend)	
KT21	Full Quick Connect (90° Bend)	
KT25	Half Quick Connect (0° Flat)	
KT26	Half Quick Connect (45° Bend)	
KT27	Half Quick Connect (90° Bend)	See page 77
ST	Full Solder	
3/4 ST	Half Solder	
Y	Feed Thru Solder (.312)	See page 74
J 600	Line-to-Line Jumper	
600RJ(S)	Multiple Position Jumper	
3865	SEMS Pressure Saddle Screw ¹	Consult C/S
PSB	Phil-Slot Brass Screw	

Quick Connects: .020" x .187"

¹ Bare wire Range with SEMS screw of #14-22 AWG, Stranded Copper Only



BARRIER
TERMINAL BLOCKS

Double Row Terminal Blocks

671 RZ Series

Specifications:

- 30 amps
- 150 volts Class-C, 300V Class B
- Base, thermoplastic, 125°C (UL RTI)
- Screws, steel, #6-32 phil-slot
- Terminals, plated brass
- Closed back
- 1-30 poles at 7/16" centers
- Accepts lugs w/max width of .33"
- Bare wire range #14-#22 AWG

Standards:

- UL recognized file no. XCFR2.E62806
- CSA certified file no. LR19766
- CE compliant (IEC 60947-7-1)
- RoHS compliant



671 RZ 06

Catalog #	# of Poles	Dimensions	
		A	B
671 RZ 01	1	1.19	0.88
671 RZ 02	2	1.62	1.31
671 RZ 03	3	2.06	1.75
671 RZ 04	4	2.50	2.19
671 RZ 05	5	2.94	2.63
671 RZ 06	6	3.37	3.06
671 RZ 07	7	3.81	3.50
671 RZ 08	8	4.25	3.94
671 RZ 09	9	4.69	4.38
671 RZ 10	10	5.12	4.81
671 RZ 11	11	5.56	5.25
671 RZ 12	12	6.00	5.69
671 RZ 13	13	6.44	6.13
671 RZ 14	14	6.87	6.56
671 RZ 15	15	7.31	7.00
671 RZ 16	16	7.75	7.44
671 RZ 17	17	8.19	7.88
671 RZ 18	18	8.62	8.31
671 RZ 19	19	9.06	8.75
671 RZ 20	20	9.50	9.19
671 RZ 21	21	9.94	9.63
671 RZ 22	22	10.37	10.06
671 RZ 23	23	10.81	10.50
671 RZ 24	24	11.25	10.94
671 RZ 25	25	11.69	11.38
671 RZ 26	26	12.12	11.81
671 RZ 27	27	12.56	12.25
671 RZ 28	28	13.00	12.69
671 RZ 29	29	13.44	13.13
671 RZ 30	30	13.87	13.56

mm=dim X 25.4

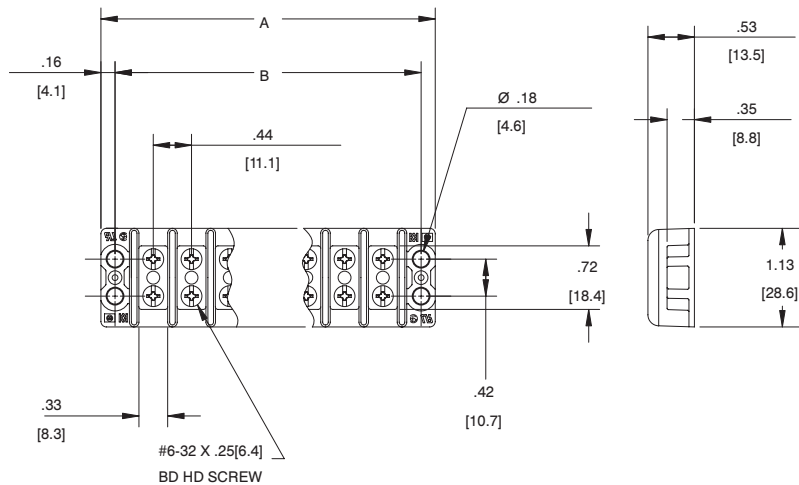
Hardware Options:

(Hardware options may affect ratings - consult Customer Service)

Catalog #	Product Description	Page Reference
KT37	Full Quick Connect (0° Flat)	See page 73
KT38	Full Quick Connect (45° Bend)	
KT39	Full Quick Connect (90° Bend)	
KT43	Half Quick Connect (0° Flat)	
KT44	Half Quick Connect (45° Bend)	
KT45	Half Quick Connect (90° Bend)	
ST	Full Solder	See page 77
3/4 ST	Half Solder	
J 601	Line-to-Line Jumper	See page 74
601RJ(S)	Multiple Position Jumper	
3765	SEMS Pressure Saddle Screw ¹	
3767	SEMS Pressure Saddle Screw with External Tooth Lock Washer ¹	Consult C/S
PSB	Phil-Slot Brass Screw	Consult C/S

Quick Connects: .032" x .250"

¹ Bare wire Range with SEMS screw of #12-22 AWG, Stranded Copper Only



Double Row Terminal Blocks

672 RZ Series

Specifications:

- 30 amps
- 600 volts AC/DC, Class B/C
- Base, thermoplastic, 125°C (UL RTI)
- Terminals, plated brass
- Screws, steel, #8-32 phil-slot
- Closed back
- 1-24 poles at 9/16" centers
- Accepts lugs w/max width of .41"
- Bare wire range #12-#14 AWG

Standards:

- UL recognized, file no. XCFR2.E47811
- CSA certified, file no. LR19766
- CE compliant (IEC 60947-7-1)
- RoHS compliant



672 RZ 03

Catalog #	# of Poles	Dimensions	
		A	B
672 RZ 01	1	1.54	1.13
672 RZ 02	2	2.10	1.69
672 RZ 03	3	2.66	2.25
672 RZ 04	4	3.22	2.81
672 RZ 05	5	3.79	3.38
672 RZ 06	6	4.35	3.94
672 RZ 07	7	4.91	4.50
672 RZ 08	8	5.47	5.06
672 RZ 09	9	6.04	5.63
672 RZ 10	10	6.60	6.19
672 RZ 11	11	7.16	6.75
672 RZ 12	12	7.72	7.31
672 RZ 13	13	8.29	7.88
672 RZ 14	14	8.85	8.44
672 RZ 15	15	9.41	9.00
672 RZ 16	16	9.97	9.56
672 RZ 17	17	10.54	10.13
672 RZ 18	18	11.10	10.69
672 RZ 19	19	11.66	11.25
672 RZ 20	20	12.22	11.81
672 RZ 21	21	12.79	12.38
672 RZ 22	22	13.35	12.94
672 RZ 23	23	13.91	13.50
672 RZ 24	24	14.47	14.06

mm=dim X 25.4

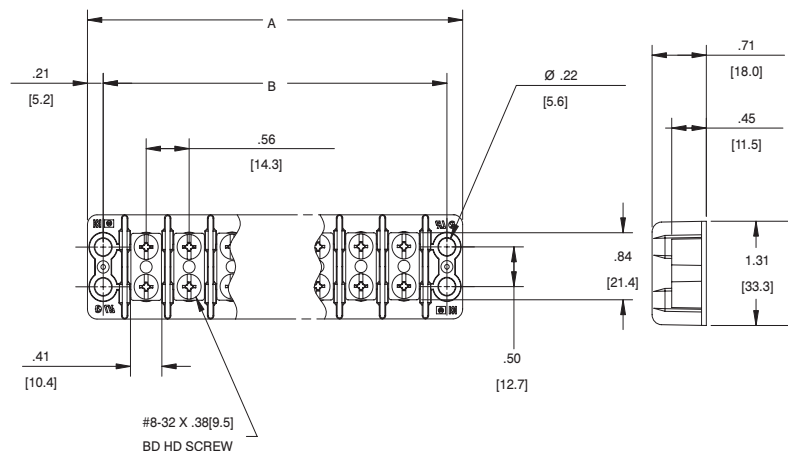
Hardware Options:

(Hardware options may affect ratings - consult Customer Service)

Catalog #	Product Description	Page Reference
KT55	Full Quick Connect (0° Flat)	See page 73
KT56	Full Quick Connect (45° Bend)	
KT57	Full Quick Connect (90° Bend)	
KT61	Half Quick Connect (0° Flat)	
KT62	Half Quick Connect (45° Bend)	
KT63	Half Quick Connect (90° Bend)	
ST	Full Solder	See page 77
3/4 ST	Half Solder	
J 602	Line-to-Line Jumper	See page 74
3786	SEMS Pressure Saddle Screw ¹	
3787	SEMS Pressure Saddle Screw with External Tooth Lock Washer ¹	Consult C/S
PSB	Phil-Slot Brass Screw	Consult C/S

Quick Connects: .032" x .250"

¹ Bare wire Range with SEMS screw of #10-22 AWG, Stranded Copper Only



BARRIER
TERMINAL BLOCKS