

MICRO SWITCH

FREERPORT ILLINOIS, U.S.A
A DIVISION OF HONEYWELL
FED. MFG. CODE 91929

SWITCH - BASIC

CATALOG LISTING

BZ-RQ66

BZ-RQ66

M

DRAWING NUMBER

ISSUE

6

3

REPLACES

RELEASE NO. CO-8520

CHECK

REVISIONS

A	NEW DWG CO34158
K	P 26 SEP 74
B	CO38099
K	P 5 JUN 77
C	CO- 73287-J
	JAL 22 NOV 93
D	CO- 77592
	DAW 15 AUG 94

CHECK

4 OCT 74

DJW

74

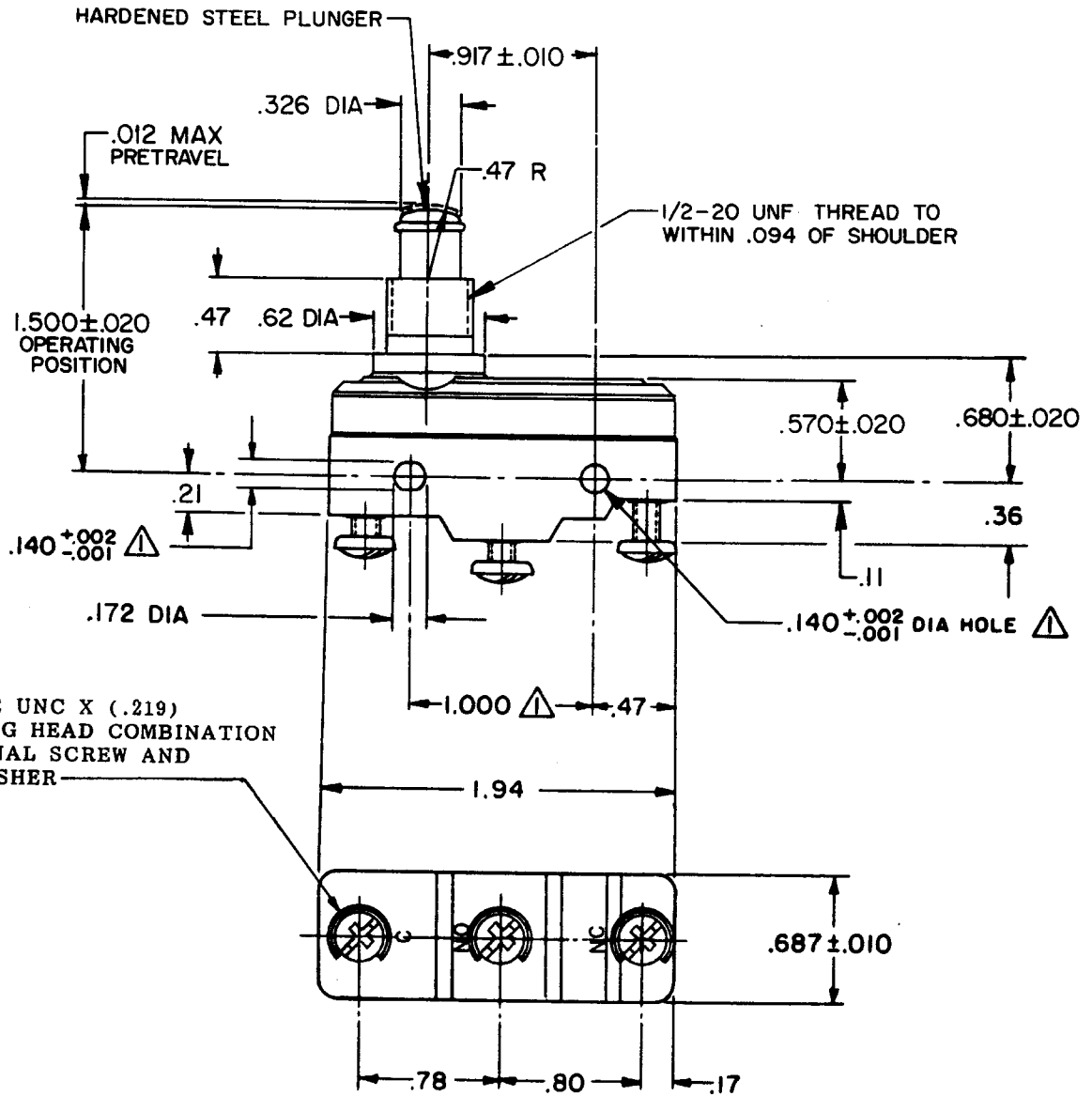
SEP

K P

126

SEP

FO-52848-A



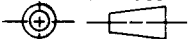
3X 6-32 UNC X (.219)
BINDING HEAD COMBINATION
TERMINAL SCREW AND
CUPWASHER

NOTE -

△ - MOUNTING HOLES WILL ACCEPT PINS OR SCREWS
OF .139 MAX DIA ON 1.000 ± .002 CENTERS

THIS DRAWING COVERS A PROPRIETARY ITEM AND IS THE PROPERTY OF MICRO SWITCH, A DIVISION OF HONEYWELL. THIS DRAWING IS NOT TO BE COPIED OR USED WITHOUT THE APPROVAL OF MICRO SWITCH.

THIRD ANGLE PROJECTION



CHARACTERISTICS

OPERATING FORCE-----6-9 1/2 OZ
RELEASE FORCE-----4 OZ MIN
DIFFERENTIAL TRAVEL---.0002-.0005
OVERTRAVEL-----.219 MIN

ELECTRICAL DATA

CONTACT ARRANGEMENT
S P D T

UL LISTED - FILE E12252
CODE L103 15A-125, 250 OR 480 VAC
1/8HP-125 VAC; 1/4HP-250 VAC



SCALE FULL

DO NOT SCALE PRINT

TOLERANCES

APPLY TO DESIGN UNITS. CONVERSIONS ARE ONLY FOR REFERENCE. UNLESS NOTED, TOLERANCES ARE ±

	DIM. mm	TOL. mm/in	DIM. in	TOL. mm/in
NO PLACES	X	1/.04	X	0.81/03
ONE PLACE	X,X	0.41/018	X,X	0.38/.015
TWO PLACES	X,XX	0.15/.008	X,XX	0.13/.005
THREE PLACES	X,XXX		X,XXX	
ANGLES				

SI METRIC

US CUSTOMARY

DESIGN UNITS

WEIGHT .090 LB