

COMPONENTS

ELEMENTS (ASSORTMENTS) | CASES | CONSUMABLES

E100 | DEVELOPER

for photopositive coated boards.



E100

You can download the Security data sheet on our website- www.kemo-electronic.de

E250 | DEVELOPER

for photopositive coated boards.

Natriumhydroxid NaOH.
10 g dissolve in 1 L water.
Caution: keep away from children!

approx. **250 g**



You can download the Security data sheet on our website www.kemo-electronic.de

Ä100 | ETCHANT

White etchant, approx. 100 g (sodium persulphate) for engraving of boards.
Sufficient for 0,5 l water. Inclusive instruction manual.

You can download the Security data sheet on our website www.kemo-electronic.de

Ä200 | ETCH-SET FOR ELECTRONIC CIRCUITS

Complete corrosive set, printed wirings to the own production. Ideal for the getting in this fascinating technique! According to some exercise it is possible to produce boards which hardly takes place to the professional ones. With detailed, illustrated instructions.

Contains:

3-copper-clad + 1 photopositive coated board, 1 developer, 1 corrosive, 1 forceps, 1 working bowl, 1 comprehensive, illustrated instruction.

You can download the Security data sheet on our website www.kemo-electronic.de

G062 | WORKING BOWL

Made of plastic, **Dimensions:** approx. 205 x 130 x 35 mm

W001 | PLASTIC FORCEPS

Internal geared point with an especially broad and flexible clamping surface. Ideal for works at alive parts or for handling caustic baths.

Made of plastic | **Dimensions:** approx. 125 mm long

L100 | CONDUCTIVE SILVER

Silver-conductive lacquer with excellent adhesive power. Ideal for repairing boards, window alarm loops and window heatings. Very conductive: approx. 0,02 Ohm - 0,1 Ohm/cm². Based on the new regulations, we supply this lacquer jointly with the package insert „DIN-Safety Data Sheet“, in glass bottles and SB-packing. Content approx. 2 ml.

Conduction: approx. 0,02 Ohm - 0,1 Ohm/cm²

The **BIG**
NEW-
COMER



E250

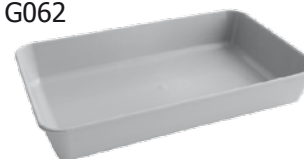


Ä100



Ä200

G062



W001



L100