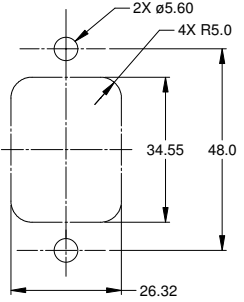
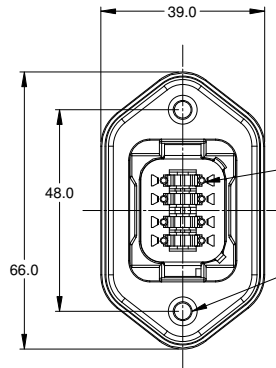
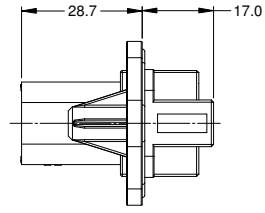


REVISIONS					
REV	ECO	DESCRIPTION	DATE	BY	APPR
A1	-	RELEASE	29JUN15	JAH	

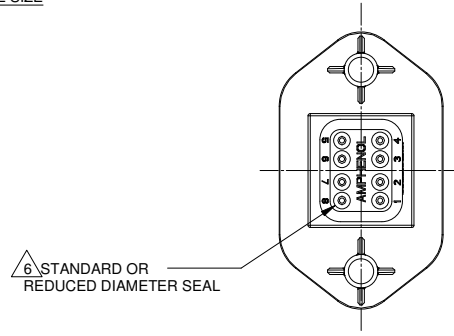


MOUNTING PLATE SIZE

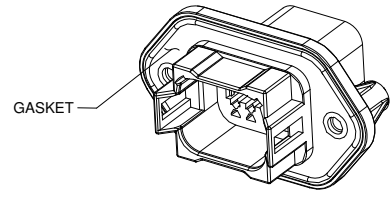
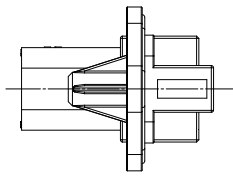
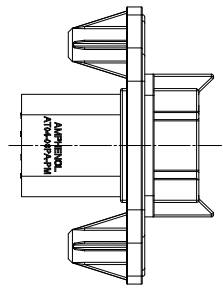


REQUIRES CONTACT RETENTION WEDGE AW8P

2X Ø4.0, 16.4 DP FROM MATING SURFACE
 RECOMMENDED ATTACHMENT OPTIONS:
 1. HEX WASHER HEAD SHEETMETAL SCREW, #10, 1/2" LONG, HEX SIZE 5/16".
 2. SELF THREAD SCREW FOR PLASTIC SUCH AS ST 4.8



STANDARD OR REDUCED DIAMETER SEAL



GASKET

NOTES: UNLESS OTHERWISE SPECIFIED

- MATERIAL:
HOUSING: THERMOPLASTIC
CONTACT: COPPER ALLOY
- MODIFICATIONS: FLANGE, GASKET, END CAP (OPT.), RD SEAL (OPT.)
- SPECIFICATIONS:
 - CURRENT RATING: 13 AMPS
 - OPERATING TEMPERATURE: -55°C TO +125°C
 - DIELECTRIC WITHSTANDING VOLTAGE: LESS THAN 2 MILLIAMPS CURRENT LEAKAGE @ 1500 VOLTS AC.
 - INSULATION RESISTANCE: 1000 MEGOHMS MIN @ 25°C.
 - MOISTURE RESISTANCE: IP67 (MATED CONDITION)
 - MATING CYCLE DURABILITY: 100 CYCLES
 - RoHS COMPLIANT
- MATING PART: AT06-08SX* PLUG
(X = A,B,C,D KEYS; * = MODIFICATIONS AND COLORS)
- ALL DIMENSIONS ARE FOR REFERENCE USE ONLY.

CONTACT SIZE AND REAR SEAL WIRE RANGE

REDUCED DIAMETER SEAL:			
CONTACT SIZE	MIN. INSUL O.D.	MAX. INSUL O.D.	TYPICAL WIRE RANGE
16	1.35 mm (.053 in)	3.05 mm (.120 in)	14 - 20 AWG

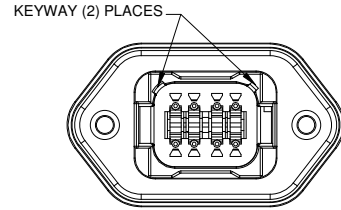
STANDARD SEAL:			
CONTACT SIZE	MIN. INSUL O.D.	MAX. INSUL O.D.	TYPICAL WIRE RANGE
16	2.24 mm (.088 in)	3.68 mm (.145 in)	14 - 20 AWG

SEE SHEET 2 FOR KEYS		PART NUMBER		DESCRIPTION		ITEM
QUANTITY		MATERIALS LIST		<p>Amphenol</p> <p>Sine Systems - www.amphenol-sine.com 44724 Morley Drive Clinton Township, MI 48036</p> <p>RECEPTACLE, 8 PIN, AT SERIES, W/FLANGE</p>		
UNLESS OTHERWISE SPECIFIED		SIGNATURES		DATE		<p>THIS DRAWING IS SUPPLIED FOR INFORMATION ONLY. DESIGN FEATURES, SPECIFICATIONS AND PERFORMANCE DATA SHOWN HEREON ARE THE PROPERTY OF THE AMPHENOL CORPORATION. NO RIGHTS OF REPRODUCTION ARE IMPLIED. ALL DIMENSIONS ARE SUBJECT TO NORMAL MANUFACTURING VARIATIONS.</p>
1) All dimensions are in metric(mm).		DRAWN: J. HEAD		14JUL15		
2) Tolerances are as follows:		CHECKED:				
1 PL DEC ±0.30 Fractions ±1/64		ENGINEER:				
2 PL DEC ±0.15		APPROVAL:				
3 PL DEC ±0.08		CUSTOMER:				
3) Note reference =		MATERIAL SPECIFICATIONS:				
PROCESS SPECIFICATIONS:		NEXT ASSY:				
SIZE	TYPE	DWG NO.	REVISION			
B	C-	AT04-08PX-PMXX	A1			
SCALE: NONE		SHEET 1 OF 2				

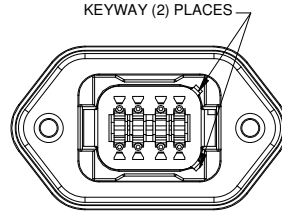
TITLE: RECEPTACLE, 8 PIN, AT SERIES, W/FLANGE
 DWG NO.: AT04-08PX-PMXX
 REV: A1
 SH: 1
 OF: 2

REVISIONS					
REV	ECO	DESCRIPTION	DATE	BY	APPR
A1	-	RELEASE	14JUL15	JAH	

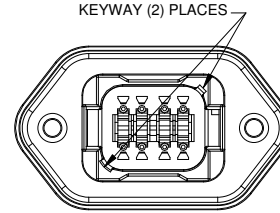
P/N AT04-08PA-PMXX
KEY-A CONFIGURATION
STANDARD COLOR: GREY



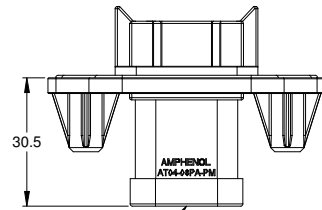
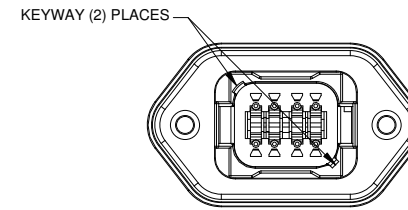
P/N AT04-08PB-PMXX
KEY-B CONFIGURATION
STANDARD COLOR: BLACK



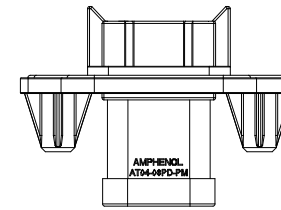
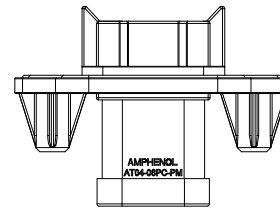
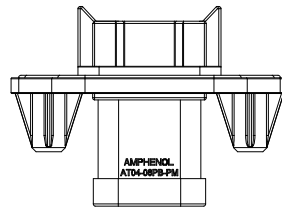
P/N AT04-08PC-PMXX
KEY-C CONFIGURATION
STANDARD COLOR: GREEN



P/N AT04-08PD-PMXX
KEY-D CONFIGURATION
STANDARD COLOR: BROWN



END CAP SHOWN
ON THIS SHEET



KEY-A CONFIGURATION		
END CAP	SEAL	PART NUMBER
NO	STANDARD	AT04-08PA-PM11
NO	REDUCED DIA.	AT04-08PA-PM12
YES	STANDARD	AT04-08PA-PM13
YES	REDUCED DIA.	AT04-08PA-PM14

KEY-B CONFIGURATION		
END CAP	SEAL	PART NUMBER
NO	STANDARD	AT04-08PB-PM11
NO	REDUCED DIA.	AT04-08PB-PM12
YES	STANDARD	AT04-08PB-PM13
YES	REDUCED DIA.	AT04-08PB-PM14

KEY-C CONFIGURATION		
END CAP	SEAL	PART NUMBER
NO	STANDARD	AT04-08PC-PM11
NO	REDUCED DIA.	AT04-08PC-PM12
YES	STANDARD	AT04-08PC-PM13
YES	REDUCED DIA.	AT04-08PC-PM14

KEY-D CONFIGURATION		
END CAP	SEAL	PART NUMBER
NO	STANDARD	AT04-08PD-PM11
NO	REDUCED DIA.	AT04-08PD-PM12
YES	STANDARD	AT04-08PD-PM13
YES	REDUCED DIA.	AT04-08PD-PM14

QUANTITY	PART NUMBER	DESCRIPTION	ITEM
MATERIALS LIST			
UNLESS OTHERWISE SPECIFIED: 1) All dimensions are in metric(mm). 2) Tolerances are as follows: 1 PL DEC ±0.30 Fractions ±1/64 2 PL DEC ±0.15 Angles ±1° 3 PL DEC ±0.08		SIGNATURES DATE DRAWN: J. HEAD 14JUL15 CHECKED: ENGINEER: APPROVAL:	
MATERIAL SPECIFICATIONS:		CUSTOMER: Amphenol Sine Systems - www.amphenol-sine.com 44724 Morley Drive Clinton Township, MI 48036	
PROCESS SPECIFICATIONS:		THIS DRAWING IS SUPPLIED FOR INFORMATION ONLY. DESIGN FEATURES, SPECIFICATIONS AND PERFORMANCE DATA SHOWN HEREON ARE THE PROPERTY OF THE AMPHENOL CORPORATION. NO RIGHTS OF REPRODUCTION ARE IMPLIED. ALL DIMENSIONS ARE SUBJECT TO NORMAL MANUFACTURING VARIATIONS.	
NEXT ASSY:		RECEPTACLE, 8 PIN, AT SERIES, W/FLANGE SIZE: B C- DWG NO: AT04-08PX-PMXX REVISION: A1 SCALE: NONE SHEET 2 OF 2	

TITLE: RECEPTACLE, 8 PIN, AT SERIES, W/FLANGE
DWG NO: AT04-08PX-PMXX
REV: A1
SH: 2
OF: 2