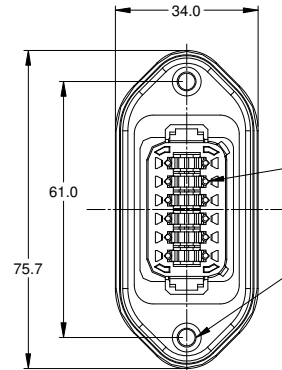
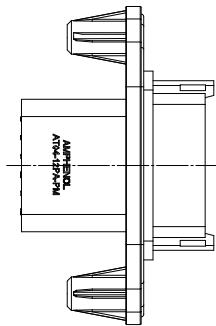
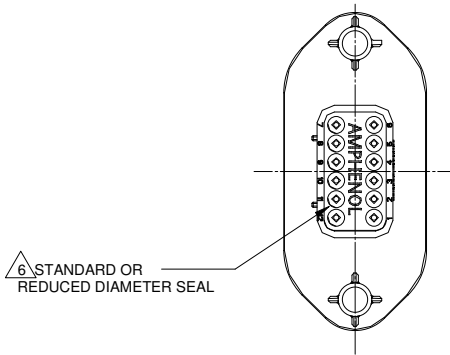
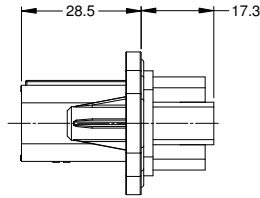


| REVISIONS |     |             |         |     |      |
|-----------|-----|-------------|---------|-----|------|
| REV       | ECO | DESCRIPTION | DATE    | BY  | APPR |
| A1        | -   | RELEASE     | 14JUL15 | JAH |      |

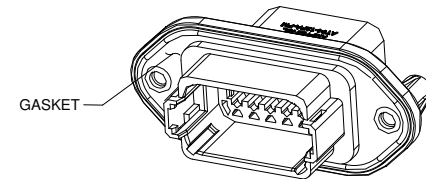
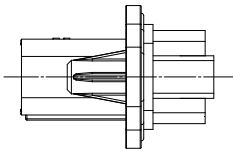


MOUNTING PLATE SIZE



REQUIRES CONTACT RETENTION WEDGE AW12P

- 2X Ø4.0, 16.4 DP FROM MATING SURFACE  
RECOMMENDED ATTACHMENT OPTIONS:  
1. HEX WASHER HEAD SHEETMETAL SCREW, #10, 1/2" LONG, HEX SIZE 5/16".  
2. SELF THREAD SCREW FOR PLASTIC SUCH AS ST 4.8



NOTES: UNLESS OTHERWISE SPECIFIED

- MATERIAL:  
HOUSING: THERMOPLASTIC  
CONTACT: COPPER ALLOY
- MODIFICATIONS: FLANGE, GASKET, END CAP (OPT.), RD SEAL (OPT.)
- SPECIFICATIONS:
  - CURRENT RATING: 13 AMPS
  - OPERATING TEMPERATURE: -55°C TO +125°C
  - DIELECTRIC WITHSTANDING VOLTAGE: LESS THAN 2 MILLIAMPS CURRENT LEAKAGE @ 1500 VOLTS AC.
  - INSULATION RESISTANCE: 1000 MEGOHMS MIN @ 25°C.
  - MOISTURE RESISTANCE: IP67 ( MATED CONDITION )
  - MATING CYCLE DURABILITY: 100 CYCLES
  - RoHS COMPLIANT
- MATING PART: AT06-12SX\* PLUG  
( X = A,B,C,D KEYS; \* = MODIFICATIONS AND COLORS )
- ALL DIMENSIONS ARE FOR REFERENCE USE ONLY.

CONTACT SIZE AND REAR SEAL WIRE RANGE

REDUCED DIAMETER SEAL:

| CONTACT SIZE | MIN. INSUL O.D.   | MAX. INSUL O.D.   | TYPICAL WIRE RANGE |
|--------------|-------------------|-------------------|--------------------|
| 16           | 1.35 mm (.053 in) | 3.05 mm (.120 in) | 14 - 20 AWG        |

STANDARD SEAL:

| CONTACT SIZE | MIN. INSUL O.D.   | MAX. INSUL O.D.   | TYPICAL WIRE RANGE |
|--------------|-------------------|-------------------|--------------------|
| 16           | 2.24 mm (.088 in) | 3.68 mm (.145 in) | 14 - 20 AWG        |

| SEE SHEET 2 FOR KEYS   |  | PART NUMBER              |      | DESCRIPTION    |          | ITEM  |
|--|--|--------------------------|------|----------------|----------|---|
| QUANTITY   |  | MATERIALS LIST           |      |                |          |   |
| UNLESS OTHERWISE SPECIFIED   |  | SIGNATURES               |      | DATE           |          | <p><b>Amphenol</b></p> <p>Sine Systems - www.amphenol-sine.com<br/>44724 Morley Drive<br/>Clinton Township, MI 48036</p> <p>RECEPTACLE, 12 PIN, AT SERIES, W/FLANGE</p> |
| 1) All dimensions are in metric (mm).  |  | DRAWN: J. HEAD           |      | 14JUL15        |          |   |
| 2) Tolerances are as follows:  |  | CHECKED:                 |      |                |          |   |
| 1 PL DEC ±0.30 Fractions ±1/64   |  | ENGINEER:                |      |                |          |   |
| 2 PL DEC ±0.15   |  | APPROVAL:                |      |                |          |   |
| 3 PL DEC ±0.08   |  | CUSTOMER:                |      |                |          |   |
| 3) Note reference =  |  | MATERIAL SPECIFICATIONS: |      |                |          |   |
| MATERIAL SPECIFICATIONS:   |  | PROCESS SPECIFICATIONS:  |      | NEXT ASSY:     |          |   |
| THIS DRAWING IS SUPPLIED FOR INFORMATION ONLY. DESIGN FEATURES, SPECIFICATIONS AND PERFORMANCE DATA SHOWN HEREON ARE THE PROPERTY OF THE AMPHENOL CORPORATION. NO RIGHTS OF REPRODUCTION ARE IMPLIED. ALL DIMENSIONS ARE SUBJECT TO NORMAL MANUFACTURING VARIATIONS. |  | SIZE                     | TYPE | DWG NO.        | REVISION |   |
|  |  | B                        | C-   | AT04-12PX-PMXX | A1       |   |
|  |  | SCALE: NONE              |      | SHEET 1 OF 2   |          |   |

TITLE: RECEPTACLE, 12 PIN, AT SERIES, W/FLANGE  
DWG NO.: AT04-12PX-PMXX  
REV: A1  
SH: 1  
OF: 2

| REVISIONS |     |             |         |     |      |
|-----------|-----|-------------|---------|-----|------|
| REV       | ECO | DESCRIPTION | DATE    | BY  | APPR |
| A1        | -   | RELEASE     | 14JUL15 | JAH |      |

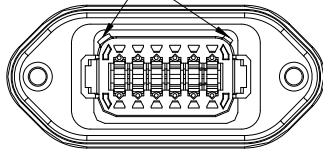
P/N AT04-12PA-PMXX  
KEY-A CONFIGURATION  
STANDARD COLOR: GREY

P/N AT04-12PB-PMXX  
KEY-B CONFIGURATION  
STANDARD COLOR: BLACK

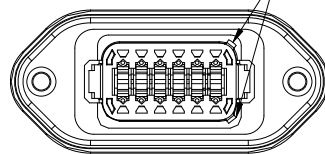
P/N AT04-12PC-PMXX  
KEY-C CONFIGURATION  
STANDARD COLOR: GREEN

P/N AT04-12PD-PMXX  
KEY-D CONFIGURATION  
STANDARD COLOR: BROWN

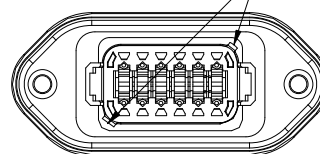
KEYWAY (2) PLACES



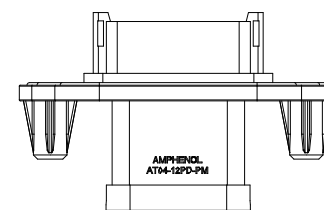
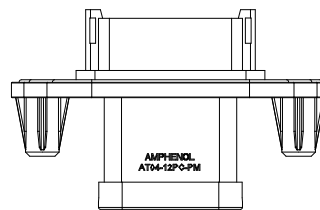
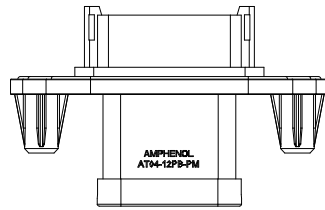
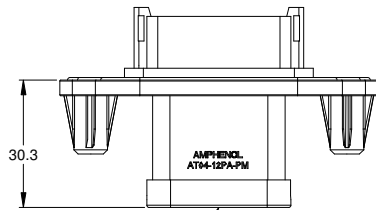
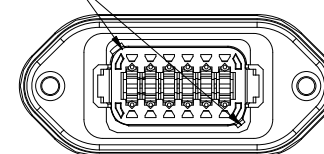
KEYWAY (2) PLACES



KEYWAY (2) PLACES



KEYWAY (2) PLACES



END CAP SHOWN  
ON THIS SHEET

| KEY-A CONFIGURATION |              |                |
|---------------------|--------------|----------------|
| END CAP             | SEAL         | PART NUMBER    |
| NO                  | STANDARD     | AT04-12PA-PM11 |
| NO                  | REDUCED DIA. | AT04-12PA-PM12 |
| YES                 | STANDARD     | AT04-12PA-PM13 |
| YES                 | REDUCED DIA. | AT04-12PA-PM14 |

| KEY-B CONFIGURATION |              |                |
|---------------------|--------------|----------------|
| END CAP             | SEAL         | PART NUMBER    |
| NO                  | STANDARD     | AT04-12PB-PM11 |
| NO                  | REDUCED DIA. | AT04-12PB-PM12 |
| YES                 | STANDARD     | AT04-12PB-PM13 |
| YES                 | REDUCED DIA. | AT04-12PB-PM14 |

| KEY-C CONFIGURATION |              |                |
|---------------------|--------------|----------------|
| END CAP             | SEAL         | PART NUMBER    |
| NO                  | STANDARD     | AT04-12PC-PM11 |
| NO                  | REDUCED DIA. | AT04-12PC-PM12 |
| YES                 | STANDARD     | AT04-12PC-PM13 |
| YES                 | REDUCED DIA. | AT04-12PC-PM14 |

| KEY-D CONFIGURATION |              |                |
|---------------------|--------------|----------------|
| END CAP             | SEAL         | PART NUMBER    |
| NO                  | STANDARD     | AT04-12PD-PM11 |
| NO                  | REDUCED DIA. | AT04-12PD-PM12 |
| YES                 | STANDARD     | AT04-12PD-PM13 |
| YES                 | REDUCED DIA. | AT04-12PD-PM14 |

| QUANTITY   | PART NUMBER | DESCRIPTION   | ITEM   |
|--|-------------|---|--|
| <b>MATERIALS LIST</b>  |             |   |  |
| UNLESS OTHERWISE SPECIFIED:<br>1) All dimensions are in metric(mm).<br>2) Tolerances are as follows:<br>1 PL DEC ±0.30   Fractions ±1/64<br>2 PL DEC ±0.15   Angles ±1°<br>3 PL DEC ±0.08<br>3) Note reference = |             | SIGNATURES<br>DRAWN: J. HEAD<br>DATE: 14JUL15<br>CHECKED:<br>ENGINEER:<br>APPROVAL:   | <br>Sine Systems - www.amphenol-sine.com<br>44724 Morley Drive<br>Clinton Township, MI 48036<br><b>RECEPTACLE, 12 PIN, AT SERIES,<br/>W/FLANGE</b> |
| MATERIAL SPECIFICATIONS:<br><br>PROCESS SPECIFICATIONS:<br><br>NEXT ASSY:  |             | CUSTOMER:<br><br>THIS DRAWING IS SUPPLIED FOR INFORMATION ONLY. DESIGN FEATURES, SPECIFICATIONS AND PERFORMANCE DATA SHOWN HEREON ARE THE PROPERTY OF THE AMPHENOL CORPORATION. NO RIGHTS OF REPRODUCTION ARE IMPLIED. ALL DIMENSIONS ARE SUBJECT TO NORMAL MANUFACTURING VARIATIONS. |  |
|  |             | SIZE: B C-<br>SCALE: NONE   | DWG NO.: AT04-12PX-PMXX<br>REVISION: A1<br>SHEET 2 OF 2  |

TITLE: RECEPTACLE, 12 PIN, AT SERIES, W/FLANGE  
DWG NO.: AT04-12PX-PMXX  
REV: A1  
SH: 2  
OF: 2