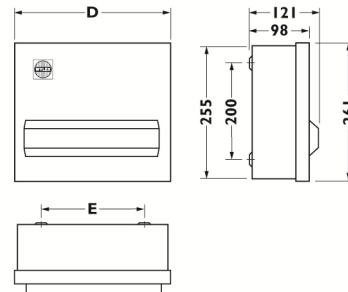




DATA SHEET

15 WAY METAL HI INTEGRITY CONSUMER UNIT

Catalogue Reference:- NMRS15SSLMHI



Current Rating	100A
Operating Voltage	240Volts +10/-6%
Short Circuit Rating	16kA when protected by a 100A HRC fuse to BS1361
Insulation Voltage	500Volts AC
IP Rating	IP2XC
Consumer Unit	BSEN 61439-3
Main Switch	BSEN 60947-3
RCD Incomer	BSEN 61008
Colour	RAL 9010
Box Material	Steel
Lid Material (including visor)	Steel
Outgoing Terminal Size Neutral Bar	Maximum cable Size 16mm ²
Outgoing Terminal Size Earth Bar	Maximum cable Size 16mm ²
Incoming Terminal Size Neutral Bar	Maximum cable Size 16mm ²
Incoming Terminal Size Earth Bar	Maximum cable Size 16mm ²
Incoming Switch Disconnecter Size	Maximum cable size Main Switch 50mm ² , RCD 35mm ²
Dimensions	Width Fixings D E 438mm 356mm

Replacement Incoming devices

- **WS102** (main switch)
- **WRS80/2** (80A 30mA RCD)
- **WRS100/2** (100A 30mA RCD)
- **WRM100/2** (100A 100mA RCD)

Replacement Spare Items

- **B4471/SPARE** (user operating instructions)
- **NHLABELPACK** (Full Kit of Labels)
- **B4585/SPARE** (12 pin replacement bus bar)
- **NM21/MCLA** (complete lid assembly)

Compatible Circuit Protection Devices:			
MCBs		RCBOs	
6kA B curve (3-5In)	6kA C curve (5-10In)	6kA B curve (3-5In)	6kA C curve (5-10In)
NHXB06	NHXC06	NHXSBS1B06	NHXSBS1C06
NHXB10	NHXC10	NHXSBS1B10	NHXSBS1C10
NHXB16	NHXC16	NHXSBS1B16	NHXSBS1C16
NHXB20	NHXC20	NHXSBS1B20	NHXSBS1C20
NHXB32	NHXC32	NHXSBS1B32	NHXSBS1C32
NHXB40	NHXC40	NHXSBS1B40	NHXSBS1C40
NHXB50	NHXC50	NHXSBS1B50	NHXSBS1C50