

## Category 6 high performance UTP outlet



### **Cat6 UTP module bright white (SJKwhB) and black (SJKbkB)**

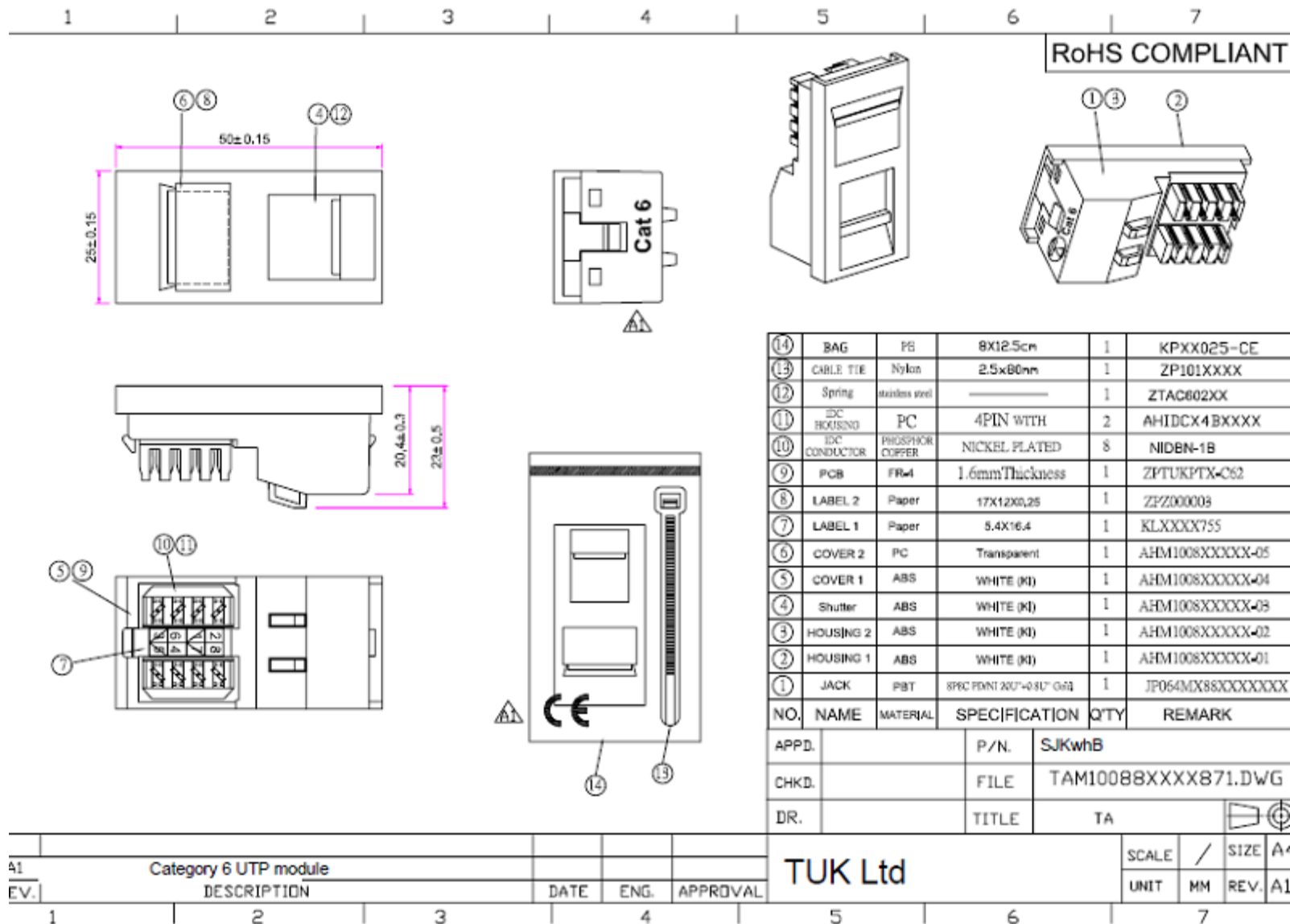
This high quality outlet fully performs to Category 6 TAI/EIA-568-B.2 at permanent link level, can be quickly and easily terminated and fits into most standard faceplates.

#### ***Features***

- Performs to Category 6 at permanent link level
- Low profile design, shuttered
- Fitted with industry standard Krone (LSA+) type IDC connections
- Compatible with most 'Euro-style' 86 x 86 faceplates
- 'Slip-in' label facility for port identification
- Integral cable tie point
- Supplied with T568B wiring label and cable tie

#### ***Specifications***

- Dimensions: 50x25x25 mm
- Weight: 15g
- Colour: Bright white or black
- Outer casing: ABS
- PCB-FR4



TUK Ltd, Unit 4, Wimbledon Stadium Business Centre, Riverside Road, London, SW17 0BA