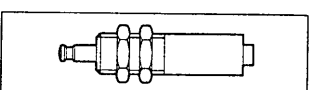


**Compact
Self-adjusting**

Hydraulic cushioning units



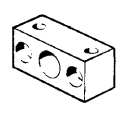
Self-adjusting shock absorbers **FESTO**

Type YSR-...-C

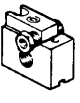
Designed to provide progressive deceleration of rapidly moving masses, these shock absorbers can reduce machine cycle times by allowing higher velocities to be safely utilised. This unit automatically adjusts the cushioning to the impact force.

- Piston diameters from 5 to 32 mm
- Stroke lengths from 5 to 60 mm
- Integral spring reset

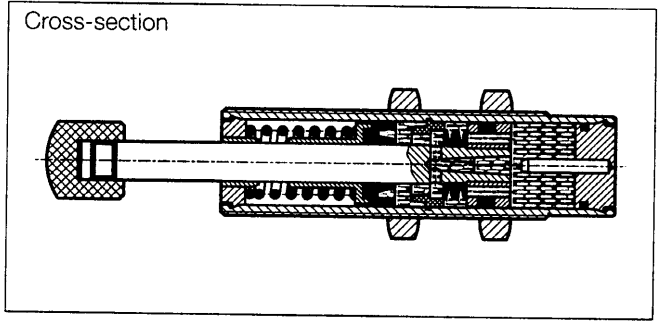
Accessories:



Mounting flange
Type YSRF + piston dia. + C



Mounting flange
with on stop sleeve
to accept sensors Type SIEN-M8
Type YSRF-S + piston dia. + C



Type	YSR-5-5-C	YSR-7-5-C	YSR-8-8-C	YSR-12-12-C	YSR-16-20-C	YSR-20-25-C	YSR-25-40-C	YSR-32-60-C
Piston dia. mm	5	7	8	12	16	20	25	32
Stroke length mm	5	5	8	12	20	25	40	60
Max. cushioning work per stroke J	1	2	3	10	30	60	160	380
Mounting thread	M8 x 1	M10 x 1	M12 x 1	M16 x 1	M22 x 1.5	M26 x 1.5	M30 x 1.5	M37 x 1.5
Max. end stop load N	200	300	500	1000	2000	3000	4000	6000

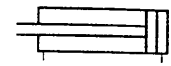
Software package to assist selection of optimum shock absorber
Part No. 128 511 (Windows 3.1 or later)

How to order: Select required cushioning work per stroke and specify cylinder dia. **Example:** Work per stroke 30 J, 16 mm piston dia., 20 mm stroke length = YSR-16-20-C

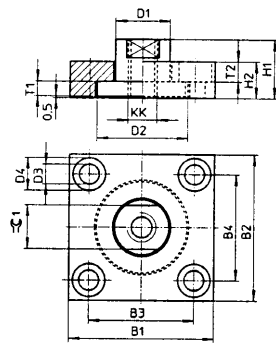
For more information contact Festo www.festo.com For dimensions see page D.11/30

Dimensions

Cylinder Accessories

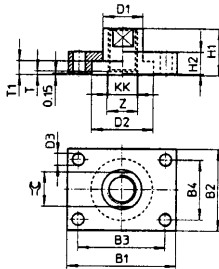


KSG...



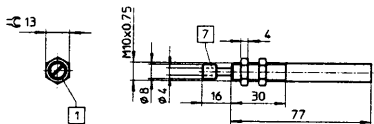
	KK	B ₁	B ₂	B ₃	B ₄	D ₁ ∅ H ₁₁	D ₂ ∅	D ₃ ∅ H ₁₃	D ₄ ∅ H ₁₃	H ₁	H ₂	∠ ₁	T ₁	T ₂
KSG-32	M10x1.25	60	37	36	23	20	30	6.6	11	24	15	17	7	7
KSG-40	M12x1.25	60	56	42	38	25	40	9	15	30	20	19	8	9
KSG-50/63	M16x1.5	80	80	58	58	30	50	11	18	32	20	24	9	11
KSG-80/100	M20x1.5	90	90	65	65	40	60	14	20	35	20	36	10	13
KSG-125	M27x2	90	90	65	65	40	60	14	20	35	20	36	10	13

KSZ...



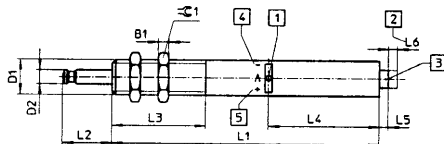
	KK	B ₁	B ₂	B ₃	B ₄	D ₁ ∅	D ₂ ∅	D ₃ ∅	H ₁	H ₂	∠	T	T ₁	Z ∅
KSZ-M6	M6	30	25	20	15	12	18	5.5	16	8	10	2	3.95	8
KSZ-M8	M8	35	30	25	20	14	20	5.5	22	8	13	-	3.95	-
KSZ-M10x1.25	M10x1.25	40	35	30	25	17	26	5.5	20	10	15	-	5.95	-
KSZ-M12x1.25	M12x1.25	50	40	40	30	17	26	5.5	22	12	15	-	5.95	-
KSZ-M16x1.5	M16x1.5	60	45	48	33	22	34	6.6	25	12	19	-	6.95	-
KSZ-M20x1.5	M20x1.5	72	50	57	35	30	44	9	32	15	27	-	8.95	-

YSR-8-8-B



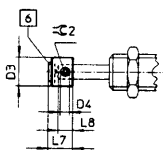
7 Buffer :

YDR...
YSR...



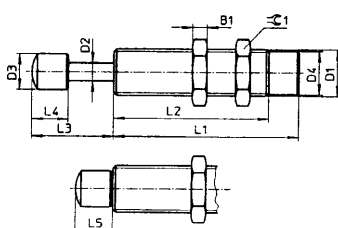
∅	B ₁	D ₁	D ₂	D ₃	D ₄	L ₁	L ₂	L ₃	L ₄	L ₅	L ₆	L ₇	L ₈	∠ ₁	∠ ₂
12	5	M15x1	6	12	M4	119	18	36	52.5	5	3	10	6	19	2
16	6	M20x1.25	8	16	M5	151	28	53	62.5	5	5	13.5	8	24	2.5
20	8	M24x1.25	10	20	M6	174	35	60	72.5	6	6	17	10	30	3
25	10	M30x1.5	12	25	M8	227	52	80	89.8	9	10	20.5	12	36	4
32	12	M37x1.5	15	32	M8	275	75	108	106.3	13	15	26	15	46	4

YSRP...



- 1 Cushioning adjustment
- 2 Oil reservoir
- 3 Oil filler
- 4 - less cushioning
- 5 + more cushioning
- 6 Polyurethane panel

YSR...-C



	B ₁	D ₁	D ₂ ∅	D ₃ ∅	D ₄ ∅	L ₁	L ₂	L ₃	L ₄	L ₅	∠ ₁
YSR-5-5-C	3	M 8x1	2.5	5	6.6	29	19	10.8	5.5	5.8	10
YSR-7-5-C	3.5	M10x1	3	6	8.6	34	23	12.3	7	7.3	13
YSR-8-8-C	4	M12x1	4	8	10.5	46	33	16.3	8	8.3	15
YSR-12-12-C	5	M16x1	6	12	14.5	64	51	24.5	12	12.5	19
YSR-16-20-C	6	M22x1.5	8	16	20	85	69	36.5	16	16.5	27
YSR-20-25-C	8	M26x1.5	10	20	24	104	87	45.5	20	20.5	32
YSR-25-40-C	10	M30x1.5	12	25	28	152	125	61.5	20.5	21.5	36
YSR-32-60-C	12	M37x1.5	15	32	35	207	179	87	26	27	46