

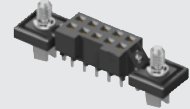


(2,00 mm) .0787"

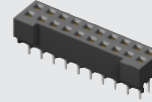
S2M-105-02-F-D



S2M-105-01-L-D-DS



S2M-110-01-L-D



S2M SERIES

# HIGH RELIABILITY CABLE SOCKET

## SPECIFICATIONS

For complete specifications and recommended PCB layouts see [www.samtec.com?S2M](http://www.samtec.com?S2M)

**Insulator Material:** Black Liquid Crystal Polymer

**Contact Material:** BeCu

**Plating:** Sn or Au over

50µ" (1,27 µm) Ni

**Current Rating (S2M/T2SD):** 2.6 A per pin

(1 pin powered per row)

**Operating Temp Range:** -55°C to +125°C

**Contact Resistance:** 10 mΩ max

**Insertion Depth:** (3,05 mm) .120" to (3,25 mm) .128"

**Insertion Force:** (Single contact only)

2.0 oz (0,56 N) average

**Withdrawal Force:** (Single contact only)

1.5 oz (0,42 N) average

**Max Cycles:** 100 with 10µ" (0,25 µm) Au

**RoHS Compliant:** Yes

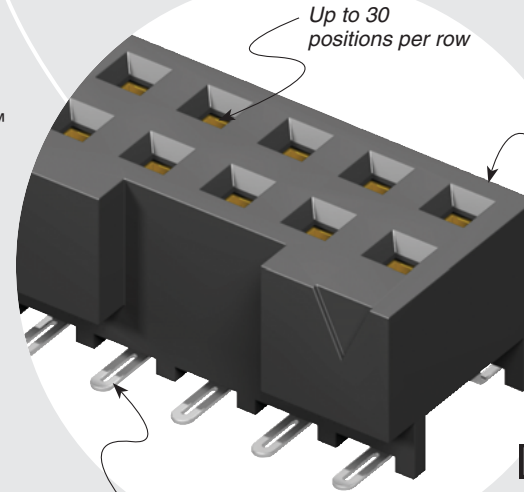
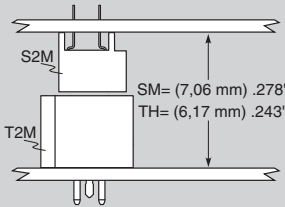
**Processing:** Lead-Free Solderable: Yes

**SMT Lead Coplanarity:** (0,10 mm) .004" max

Mates with: T2SD, T2M



## MATED HEIGHT



Up to 30 positions per row

Mates with Tiger Eye™ discrete wire cable assemblies

Choice of Surface Mount or Through-hole



<b>S2M</b>	<b>1</b>	<b>NO. OF POSITIONS</b>	<b>LEAD STYLE</b>	<b>PLATING OPTION</b>	<b>D</b>	<b>OPTION</b>	<b>OTHER OPTION</b>
------------	----------	-------------------------	-------------------	-----------------------	----------	---------------	---------------------

05, 07, 10, 15, 20, 25, 30 (Per Row)

-01 = Through-hole  
-02 = Surface Mount

-F = Gold flash on contact, Matte Tin on tail  
-L = 10µ" (0,25 µm) Gold on contact, Matte Tin on tail

-K = (5,50 mm) .217" DIA Polyimide film Pick & Place Pad (-SM only)  
-LC = Locking Clip (Manual placement required) (-SM only)

-TR = Tape & Reel Packaging

-DS = Screw Down (N/A with-LC) (mates with -T2M-DS)

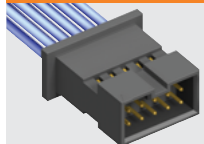


## RECOGNITIONS

For complete scope of recognitions see [www.samtec.com/quality](http://www.samtec.com/quality)



## OTHER SOLUTIONS



See T2SD in the discrete wire section or contact Samtec.

## ALSO AVAILABLE (MOQ Required)

- Other platings Contact Samtec.

**Note:** Some lengths, styles and options are non-standard, non-returnable.

