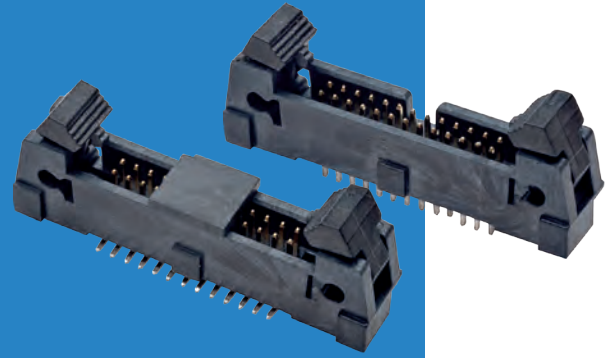
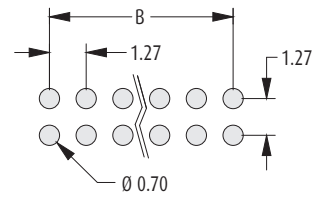
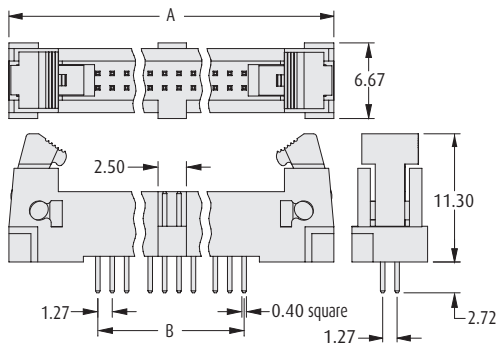


## Male Vertical Latching Connectors

- ❖ Suitable for use with female cable connectors shown on page 114.
- ❖ Small footprint.
- ❖ Shrouded for robust pin protection.
- ❖ Polarised to prevent mis-mating.
- ❖ Secure, positive latch & ejection system.
- ❖ Through PCB and SMT in tape and reel.



### PC TAIL

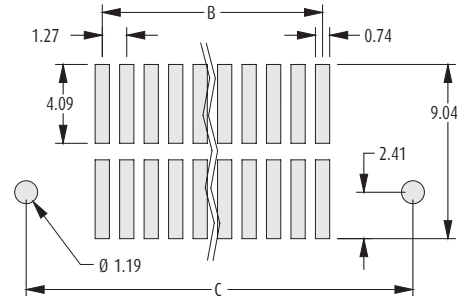
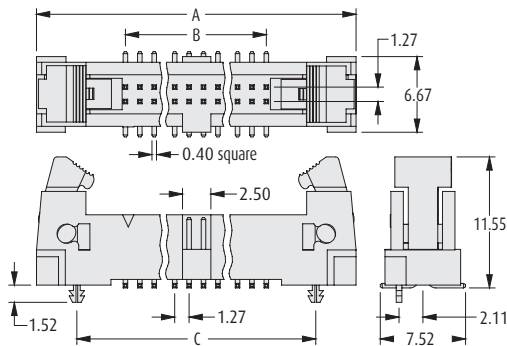


Recommended PC Board Pattern

#### CALCULATION

<b>A</b>	$B + 15.75$
<b>B</b>	$B = 1.27 \times (\text{Number of contacts per row} - 1)$
<b>C</b>	$B + 8.64$

### SURFACE MOUNT



Recommended PC Board Pattern

### HOW TO ORDER

**M50 - 3 X 5 XX 42 R**

#### SERIES CODE

#### TYPE

<b>5</b>	PC Tail
<b>6</b>	Surface Mount

#### NO. OF CONTACTS PER ROW

05, 06, 07, 08, 10, 13, 17, 20, 25

#### PACKAGING

<b>R</b>	Tape & Reeled (M50-365)
<b>Blank</b>	Loose (M50-355)

#### FINISH

**42** Gold + Tin

All dimensions in mm.