

PROLINE G2 TRANSPORTATION BASE



APPLICATION

PROLINE G2 Transportation Bases provide enhanced stability and fork-lift provisions for modular enclosures up to a maximum of 3000 mm (118.11 in.) in a multiple-bay system.

SPECIFICATIONS

- Can be used across bayed enclosures up to a maximum of 3000 mm (118.11 in.)
- A removable gland plate allows wire access between bases
- 10 gauge (3.0mm), mild steel
- Can be configured in a variety of combinations
- Unique design allows fork-lift access from each end

FINISH

- Polyester powder paint; RAL 7035 textured light gray standard
- Dip coated primed
- Custom colors available

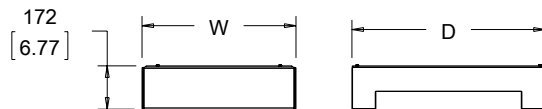
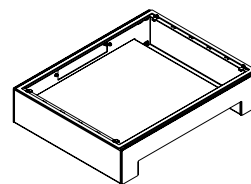
ACCESSORIES

Transportation Base Joining Kit, Side-to-Side

BULLETIN: P40

Standard Product

Catalog Number	Nominal H mm	Nominal D mm
P2BT45	400	500
P2BT46	400	600
P2BT64	600	400
P2BT65	600	500
P2BT66	600	600
P2BT68	600	800
P2BT84	800	400
P2BT85	800	500
P2BT86	800	600
P2BT88	800	800
P2BT810	800	1000
P2BT104	1000	400
P2BT105	1000	500
P2BT106	1000	600
P2BT108	1000	800
P2BT124	1200	400
P2BT125	1200	500
P2BT126	1200	600
P2BT128	1200	800
P2BT164	1600	400
P2BT165	1600	500
P2BT166	1600	600
P2BT168	1600	800
P2BT185	1800	500
P2BT186	1800	600
P2BT188	1800	800



89129496

Notes