

PLEASE CHECK WWW.MOLEX.COM FOR LATEST PART INFORMATION

Part Number: [0878325622](#)
Status: **Active**
Overview: [Milli-Grid™ Connector System](#)
Description: Milli-Grid™ Header, Surface Mount, Vertical, Shrouded, Lead-Free, 14 Circuits, 0.38µm Gold (Au) Plating, with Pick-and-Place Cap, with Side and Center Windows, with Center Polarization Slot, with PCB Locator, Embossed Tape on

Documents:

[3D Model](#) [Packaging Specification PK-87832-300 \(PDF\)](#)
[Drawing \(PDF\)](#) [RoHS Certificate of Compliance \(PDF\)](#)
[Packaging Specification PK-87831-001 \(PDF\)](#)

Agency Certification

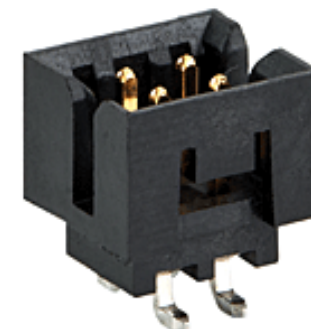
CSA LR19980
 UL E29179

General

Product Family PCB Headers
 Series [87832](#)
 Application Signal, Wire-to-Board
 Comments With Cap|Contact Molex for application in automotive industry
 Overview [Milli-Grid™ Connector System](#)
 Product Name Milli-Grid™
 UPC 822348271450

Physical

Breakaway No
 Circuits (Loaded) 14
 Circuits (maximum) 14
 Color - Resin Black
 Durability (mating cycles max) 100
 First Mate / Last Break No
 Flammability 94V-0
 Glow-Wire Compliant No
 Guide to Mating Part No
 Keying to Mating Part Yes
 Lock to Mating Part Yes
 Material - Metal Phosphor Bronze
 Material - Plating Mating Gold
 Material - Plating Termination Tin
 Material - Resin Nylon
 Net Weight 0.671/g
 Number of Rows 2
 Orientation Vertical
 PCB Locator No
 PCB Retention None
 Packaging Type Embossed Tape on Reel
 Pitch - Mating Interface 2.00mm
 Pitch - Termination Interface 2.00mm
 Plating min - Mating 0.381µm
 Plating min - Termination 1.905µm
 Polarized to PCB No
 Robotic Placement Pick and Place Cap
 Shrouded Fully
 Stackable No
 Surface Mount Compatible (SMC) Yes



Series image - Reference only

EU ELV

Not Relevant

EU RoHS

Compliant

REACH SVHC

Not Contained Per -
 ED/21/2016 (20 June
 2016)

Halogen-Free

Status

Not Low-Halogen

**Need more information on product
 environmental compliance?**

Email productcompliance@molex.com
 Please visit the [Contact Us](#) section for any
 non-product compliance questions.

China ROHS

ELV

Green Image

Not Relevant

Search Parts in this Series

[87832](#) Series

Mates With

Milli-Grid™ Vertical Through Hole
 Receptacle [79107](#) , [78787](#) , Milli-Grid™
 Flex-to-Board Vertical Receptacle [79108](#)
 , Milli-Grid™ Vertical Surface Mount
 Receptacle [79109](#) , [78788](#) , Milli-Grid™
 Crimp Housing [51110](#) , Milli-Grid™ Cable-to-
 Board Receptacle [87568](#)

Temperature Range - Operating -55°C to +105°C
Termination Interface: Style Surface Mount

Electrical

Current - Maximum per Contact 2.0A
Voltage - Maximum 125V

Solder Process Data

Duration at Max. Process Temperature (seconds) 010
Lead-free Process Capability REFLOW
Max. Cycles at Max. Process Temperature 001
Process Temperature max. C 260

Material Info

Reference - Drawing Numbers

Packaging Specification PK-87831-001, PK-87832-300
Sales Drawing SD-87832-0001

This document was generated on 07/12/2016

PLEASE CHECK WWW.MOLEX.COM FOR LATEST PART INFORMATION