

IEC Appliance Inlet C14 with Filter, Fuseholder 1- or 2-pole

Plug removal necessary for fuse replacement



Typ 5220, Fuseholder 2-pole  
Screw-On Version

Typ 5220, Fuseholder 2-pole  
Snap-In Version



### Description

- Panel Mount:  
Snap-in or screw-on mounting from front side
- 3 Functions:  
Appliance Inlet Protection class I, Fuseholder for fuse-links 5 x 20 mm 2-pole, Line filter in standard and medical version
- Quick connect terminals 6.3 x 0.8 mm

### Approvals

- VDE Certificate Number: 101307
- UL File Number: E72928

### Characteristics

- All single elements are already wired
- Plug removal necessary for fuse-link replacement
- Suitable for use in equipment according to IEC/UL 60950
- Suitable for use in medical equipment according to IEC/UL 60601-1

### References

- Alternative: version without line filter [6220](#)
- Alternative: Standard version

### Weblinks

[pdf-datasheet](#), [html-datasheet](#), [General Product Information](#), [Approvals](#), [CE declaration of conformity](#), [RoHS](#), [CHINA-RoHS](#), [REACH](#), [Mating Connectors](#), [e-Shop](#), [SCHURTER-Stock-Check](#), [Distributor-Stock-Check](#), [CAD-Drawings](#), [Accessories](#), [Detailed request for product](#)

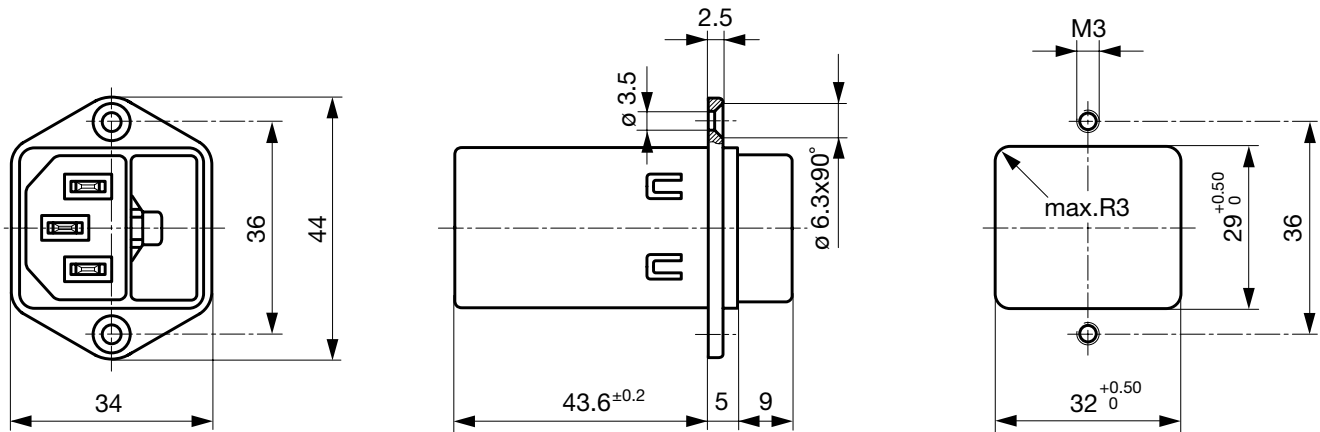
### Technical Data

|                           |   |
|---------------------------|---|
| Ratings IEC               | 1 - 10A @ Ta 40 °C / 250VAC; 50Hz   |
| Ratings UL/CSA            | 1 - 10A @ Ta 40 °C / 125VAC; 60Hz   |
| Leakage Current           | standard < 0.5mA (250V / 60Hz)<br>medical < 5 µA (250V / 60Hz)              |
| Dielectric Strength       | > 1.7kVDC between L-N<br>> 2.7kVDC between L/N-PE<br>Test voltage (2sec)    |
| Allowable Operation Temp. | -25 °C to 85 °C   |
| Climatic Category         | 25/085/21 acc. to IEC 60068-1   |
| Degree of Protection      | from front side IP 40 acc. to IEC 60529                                     |
| Protection Class          | Suitable for appliances with protection class I acc. to IEC 61140           |
| Terminal                  | Quick connect terminals 6.3 x 0.8 mm  |
| Panel Thickness s         | Screw: max 8 mm<br>Mounting screw torque max 0.5Nm<br>Snap-in: 0.8mm to 3mm |
| Material: Housing         | Thermoplastic, black, UL 94V-0  |

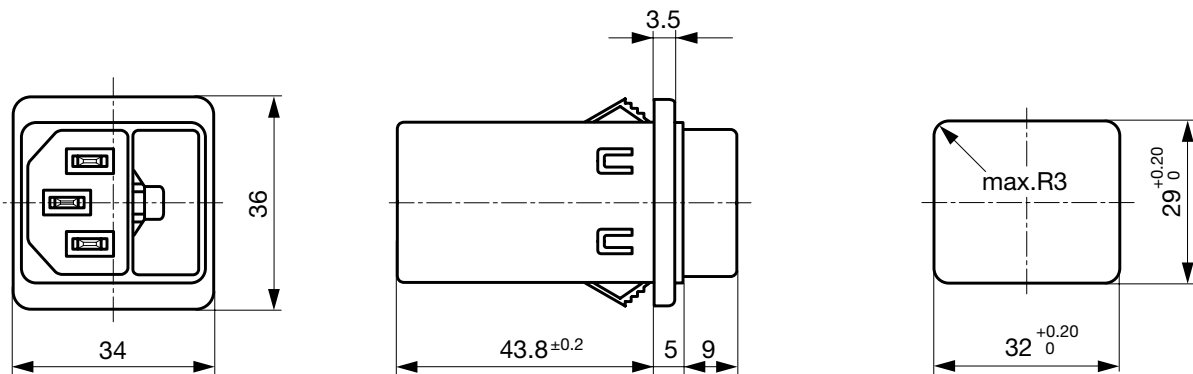
|                                   |  |
|-----------------------------------|--|
| Appliance-Inlet/-Outlet           | C14 acc. to IEC 60320, UL 498, CSA C22.2 no. 42 (for cold conditions) pin-temperature 70 °C, 10A, Protection Class I |
| Fuseholder                        | 2-pole, Shocksafe category PC2 acc. to IEC 60127-6, for fuse-links 5 x 20mm  |
| Rated Power Acceptance @ Ta 23 °C | 5 x 20: 1.6W (2-pole)  |
| Power Acceptance @ Ta > 23°C      | Admissible power acceptance at higher ambient temperature see derating curves  |
| Line Filter                       | Standard and Medical Version, IEC 60939, UL 1283, CSA C22.2 no. 8 <a href="#">Technical Details</a>                  |
| MTBF                              | > 2'300'000h acc. to MIL-HB-217 F  |

**Dimension**

Screw-on mounting type 5220



Snap-in mounting type 5220

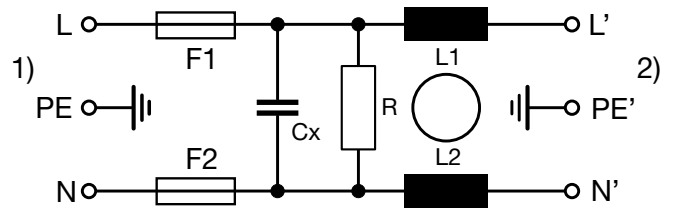
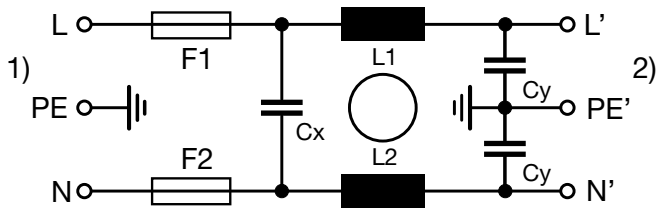
**Technical Data of Filter-Components**

| Rated Current [A] | Filter-Type                  | Inductances L [mH] | Capacitance CX [nF] | Capacitance CY [nF] | R [MΩ] |
|-------------------|------------------------------|--------------------|---------------------|---------------------|--------|
| 1                 | Standard Version             | 2 x 11             | 47                  | 2.2                 | -      |
| 2                 | Standard Version             | 2 x 4              | 47                  | 2.2                 | -      |
| 4                 | Standard Version             | 2 x 1.6            | 47                  | 2.2                 | -      |
| 6                 | Standard Version             | 2 x 0.7            | 47                  | 2.2                 | -      |
| 8                 | Standard Version             | 2 x 0.6            | 47                  | 2.2                 | -      |
| 10                | Standard Version             | 2 x 0.4            | 47                  | 2.2                 | -      |
| 1                 | Medical Version (M5)         | 2 x 11             | 47                  | -                   | 1      |
| 2                 | Medical Version (M5)         | 2 x 4              | 47                  | -                   | 1      |
| 4                 | Medical Version (M5)         | 2 x 1.6            | 47                  | -                   | 1      |
| 6                 | Medical Version (M5)         | 2 x 0.7            | 47                  | -                   | 1      |
| 8                 | Medical Version (M5)         | 2 x 0.6            | 47                  | -                   | 1      |
| 10                | Medical Version (M5)         | 2 x 0.4            | 47                  | -                   | 1      |
| 10                | Standard and Medical Version | 2 x 11             | 47                  | 2.2                 | 1      |

Diagrams

5220 Standard version

5220 Medical version

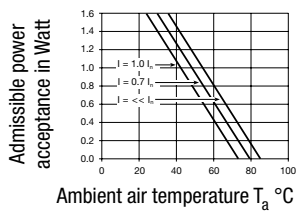


1) Line  
2) Load

1) Line  
2) Load

Derating Curves

2-pole



Attenuation Loss

--- differential mode    \_\_\_\_ common mode

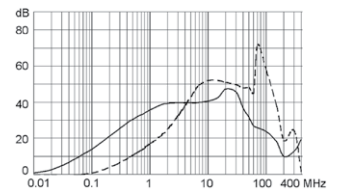
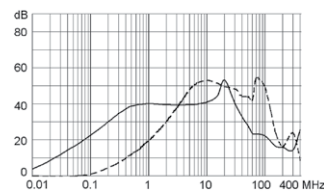
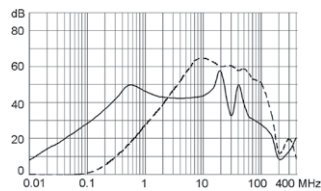
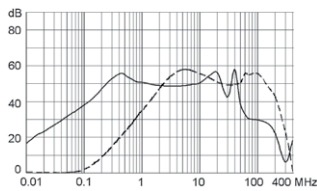
Standard version

1 A

2 A

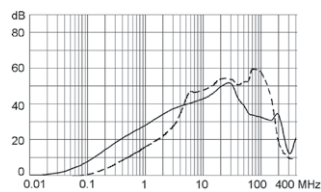
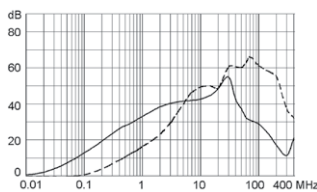
4 A

6 A

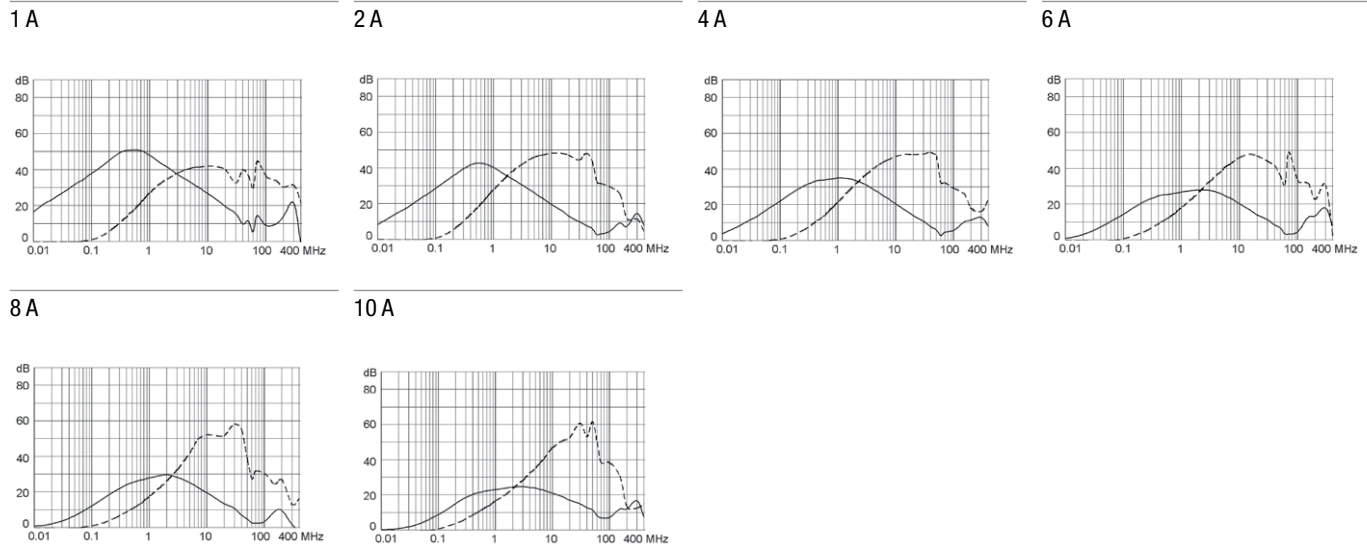


8 A

10 A



## Medical version (M5)



## All Variants

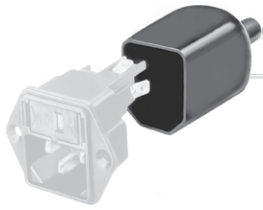
| Rated Current [A] | Filter-Type          | Panel mounting | Fuseholder | Order Number |   |
|-------------------|----------------------|----------------|------------|--------------|---|
| 1                 | Standard Version     | Snap-in        | 2-pole     | 5220.0143.1  | ■ |
| 2                 | Standard Version     | Snap-in        | 2-pole     | 5220.0243.1  | ■ |
| 4                 | Standard Version     | Snap-in        | 2-pole     | 5220.0443.1  | ■ |
| 6                 | Standard Version     | Snap-in        | 2-pole     | 5220.0643.1  | ■ |
| 8                 | Standard Version     | Snap-in        | 2-pole     | 5220.0843.1  | ■ |
| 10                | Standard Version     | Snap-in        | 2-pole     | 5220.1043.1  | ■ |
| 1                 | Standard Version     | Screw          | 2-pole     | 5220.0123.1  | ■ |
| 2                 | Standard Version     | Screw          | 2-pole     | 5220.0223.1  | ■ |
| 4                 | Standard Version     | Screw          | 2-pole     | 5220.0423.1  | ■ |
| 6                 | Standard Version     | Screw          | 2-pole     | 5220.0623.1  | ■ |
| 8                 | Standard Version     | Screw          | 2-pole     | 5220.0823.1  | ■ |
| 10                | Standard Version     | Screw          | 2-pole     | 5220.1023.1  | ■ |
| 1                 | Medical Version (M5) | Snap-in        | 2-pole     | 5220.0143.3  | ■ |
| 2                 | Medical Version (M5) | Snap-in        | 2-pole     | 5220.0243.3  | ■ |
| 4                 | Medical Version (M5) | Snap-in        | 2-pole     | 5220.0443.3  | ■ |
| 6                 | Medical Version (M5) | Snap-in        | 2-pole     | 5220.0643.3  | ■ |
| 8                 | Medical Version (M5) | Snap-in        | 2-pole     | 5220.0843.3  | ■ |
| 10                | Medical Version (M5) | Snap-in        | 2-pole     | 5220.1043.3  | ■ |
| 1                 | Medical Version (M5) | Screw          | 2-pole     | 5220.0123.3  | ■ |
| 2                 | Medical Version (M5) | Screw          | 2-pole     | 5220.0223.3  | ■ |
| 4                 | Medical Version (M5) | Screw          | 2-pole     | 5220.0423.3  | ■ |
| 6                 | Medical Version (M5) | Screw          | 2-pole     | 5220.0623.3  | ■ |
| 8                 | Medical Version (M5) | Screw          | 2-pole     | 5220.0823.3  | ■ |
| 10                | Medical Version (M5) | Screw          | 2-pole     | 5220.1023.3  | ■ |

■ Most Popular.

Availability for all products can be searched real-time: <http://www.schurter.com/en/Stock-Check/Stock-Check-SCHURTER>**Packaging unit** 10 Pcs

Accessories

Description



Assorted Covers  
Rear Cover

0859.0075



Cord retaining kits  
Cord retaining strain relief

Countersunk, B

4700.0002

Mating Outlets/Connectors

Category / Description

Appliance Outlet Overview complete



|   |      |
|---|------|
| IEC Appliance Outlet F, Screw-on Mounting, Front Side, Solder Terminal                            | 4787 |
| IEC Appliance Outlet F, Snap-in Mounting, Front Side, Solder or Quick-connect Terminal            | 4788 |
| IEC Appliance Outlet F or H, Screw-on Mounting, Front Side, Solder, PCB or Quick-connect Terminal | 5091 |

Appliance Outlet further types to 5220

Connector Overview complete



|  |         |
|--|---------|
| 4782 Mounting: Power Cord, 3 x 1 mm <sup>2</sup> / 3 x 18 AWG, Cable, Connector: IEC C13     | 4782    |
| 4022 Mounting: Power Supply Cord, 3 x 1.5 mm <sup>2</sup> , Screw clamps, Connector: IEC C13 | 4022    |
| 4785 Mounting: Power Cord, 3 x 1 mm <sup>2</sup> / 3 x 18 AWG, Cable, Connector: IEC C13     | 4785    |
| 4300-06 Mounting: Power Cord, 3 x 1 mm <sup>2</sup> / 3 x 18 AWG, Cable, Connector: IEC C13  | 4300-06 |
| 4012 Mounting: Power Supply Cord, 3 x 1.5 mm <sup>2</sup> , Screw clamps, Connector: IEC C13 | 4012    |

Connector further types to 5220

...