



### Main

Range of product	Modicon M171
Product or component type	Communication module
Communication port protocol	Modbus RTU RS485

### Complementary

Integrated connection type	RS485 wire crimp - twisted pair
Mounting adjustment	Pitch 3.81 mm
Electrical connection	Removable screw terminal block
Physical interface	90° insertion - 2.5 mm <sup>2</sup> cable
Supply	Via base board EVD/EVC
Product compatibility	Logic controller M171 performance Logic controller M172 performance
Product weight	0.077 kg

### Environment

Product certifications	CURus CSA CE EAC
Marking	CE
IP degree of protection	IP20
Ambient air temperature for operation	-10...55 °C
Ambient air temperature for storage	-20...85 °C
Relative humidity	10...90 % without condensation

### Offer Sustainability

Sustainable offer status	Not Green Premium product
RoHS (date code: YYWW)	Compliant - since 1426 - Schneider Electric declaration of conformity

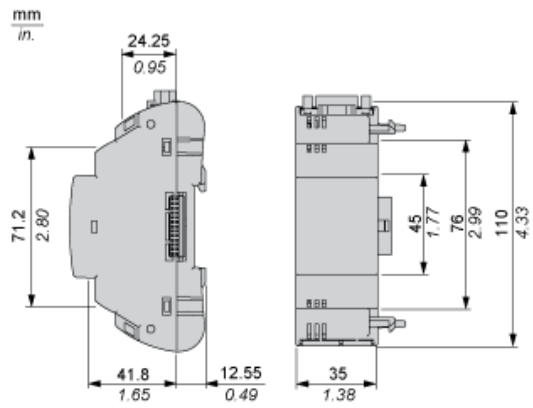
---

REACH

Reference not containing SVHC above the threshold  
Reference not containing SVHC above the threshold

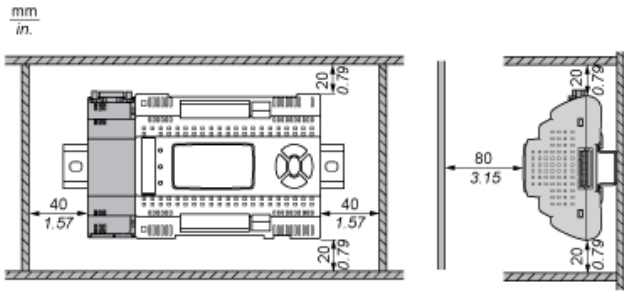
---

Dimensions

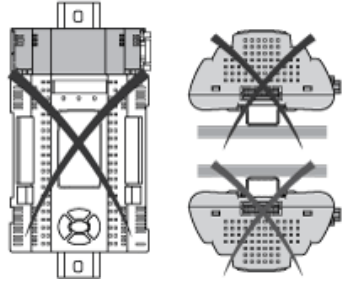


Mounting and Clearance

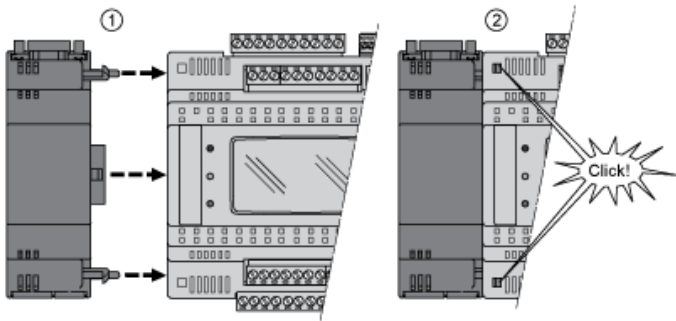
Clearance



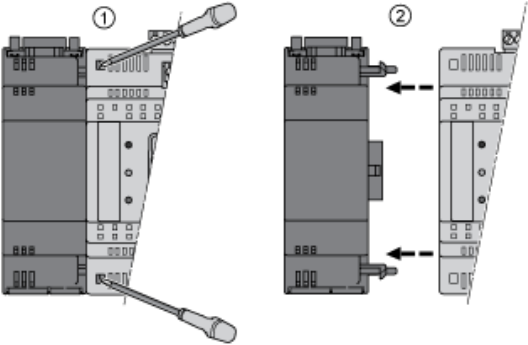
Misplacement



## Mounting on Controller



Dismounting



---

Connections and Schema

---

RS 485 Communication Module

TM171AMB

