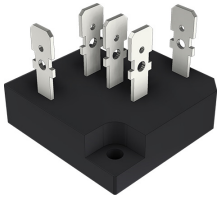


Glass Passivated 3 Phase Bridge Rectifier



Features

- Surge overload - 500 amperes peak
- Low forward voltage drop
- Mounting position : Any
- Weight : 45g

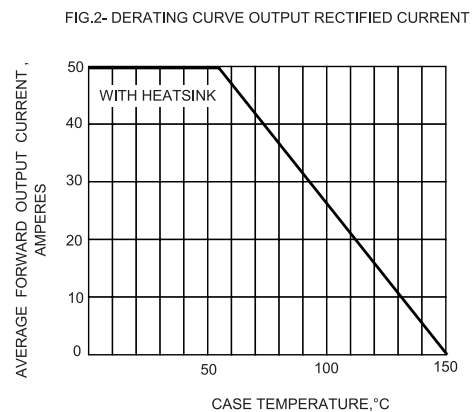
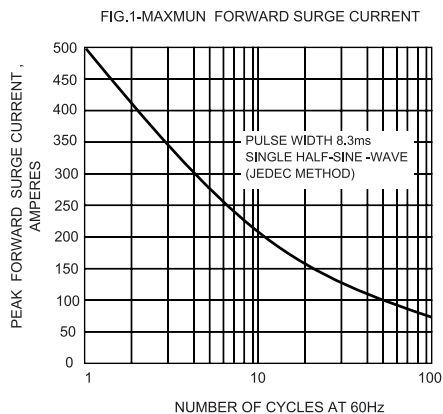
Maximum Ratings And Electrical Characteristics

Rating at 25°C ambient temperature unless otherwise specified.
Single phase, half wave, 60Hz, resistive or inductive load.
For capacitive load, derate current by 20%

Characteristics	Symbol	Values	Unit
Maximum Recurrent Peak Reverse Voltage	V_{RRM}	1000	V
Maximum RMS Bridge Input Voltage	V_{RMS}	700	
Maximum Average Forward Rectified Output Current @ $T_c = 55^\circ C$	$I_{(AV)}$	50	A
Peak Forward Surge Current 8.3ms Single Half Sine-Wave Super Imposed on Rated Load	I_{FSM}	500	A
Current Squared time (1ms<t<10ms)	I^2t	1037.5	A ² S
Dielectric Strength	V_{DIS}	2000	V
Mounting Torque	TOR	0.8	N.m
Maximum Forward Voltage Drop Per Element at 17.5 A Peak	V_F	1.05	V
Maximum Reverse Current at Rated DC Blocking Voltage Per Element @ $T_A=25^\circ C$	I_R	10	μA
Typical Thermal Resistance (Note1)	$R_{\theta JC}$	Max: 0.7	$^\circ C/W$
Operating Temperature Range	T_J	-55 to +150	$^\circ C$
Storage Temperature Range	T_{STG}		

- Notes:** 1. Thermal Resistance Junction to case.
2. The typical data above is for reference only

Rating and Characteristic Curves



Glass Passivated 3 Phase Bridge Rectifier



FIG.3-TYPICAL FORWARD CHARACTERISTICS

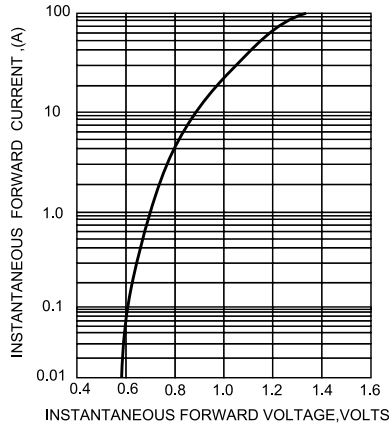
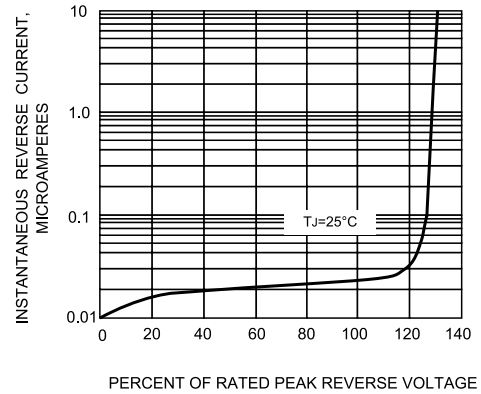
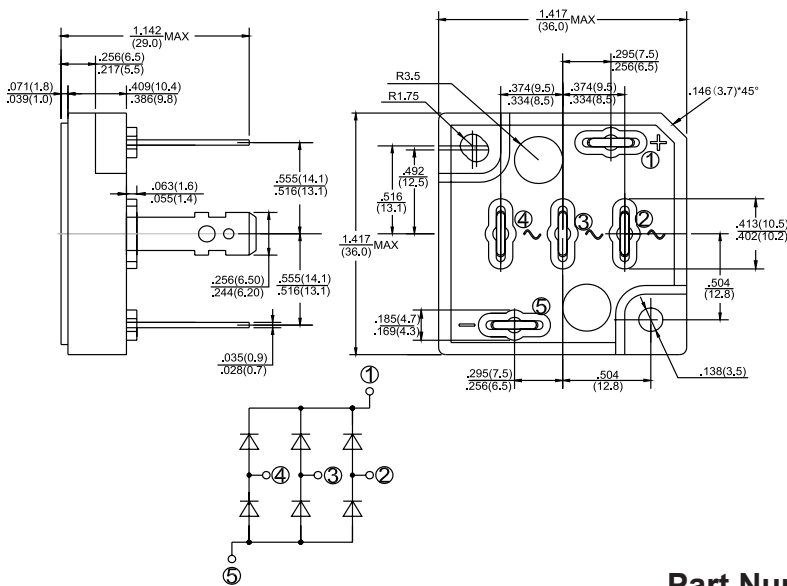


FIG.4-TYPICAL REVERSE CHARACTERISTICS



Dimension:

SCVB



Dimensions : Inches (Millimetres)

Part Number Table

Description	Part Number
Three Phase Bridge 50A 1000V Faston Lead, SCVB Package	SC50VB100

Important Notice : This data sheet and its contents (the "Information") belong to the members of the Premier Farnell group of companies (the "Group") or are licensed to it. No licence is granted for the use of it other than for information purposes in connection with the products to which it relates. No licence of any intellectual property rights is granted. The Information is subject to change without notice and replaces all data sheets previously supplied. The Information supplied is believed to be accurate but the Group assumes no responsibility for its accuracy or completeness, any error in or omission from it or for any use made of it. Users of this data sheet should check for themselves the Information and the suitability of the products for their purpose and not make any assumptions based on information included or omitted. Liability for loss or damage resulting from any reliance on the Information or use of it (including liability resulting from negligence or where the Group was aware of the possibility of such loss or damage arising) is excluded. This will not operate to limit or restrict the Group's liability for death or personal injury resulting from its negligence. Multicomp is the registered trademark of the Group. © Premier Farnell Limited 2016.

