



**Clear Anodized
(Assembled View)**

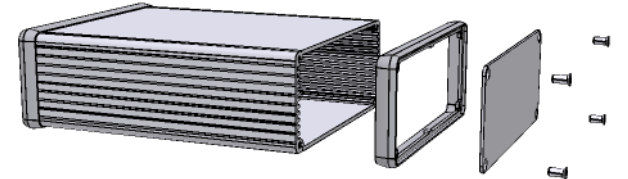
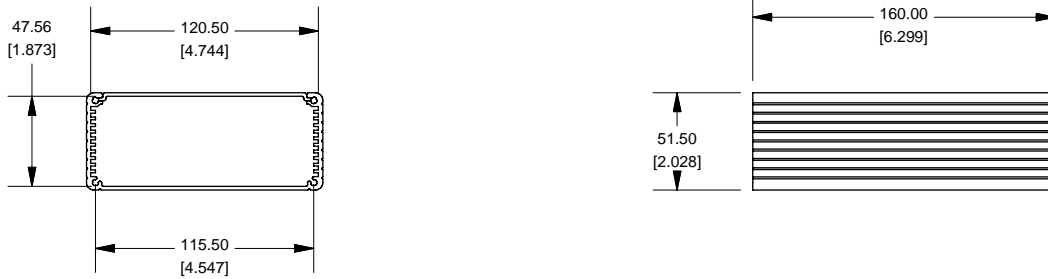
Key Features:

- Designed to house P.C. boards or for equipment interfacing.
- Sized for standard Euro cards.
- P.C. boards mount horizontally by sliding into internal slots extruded into the enclosure body.
- Rugged body constructed from extruded aluminium with a minimum thickness of .06" (1.5 mm).
- Extruded body includes a slide removable "belly" plate - except in smaller "C" sizes (ie. 1455C801, 1455C1201 sizes)

Includes:

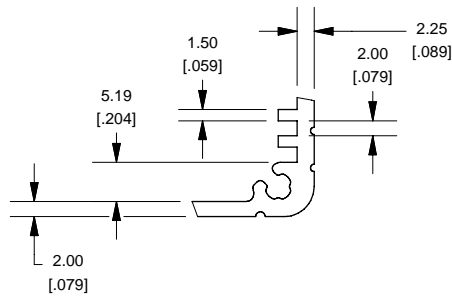
- Two aluminium end panels ([link here](#) if you prefer our solid)
- Two black ABS plastic bezels (your option to install)
- Extruded, anodized aluminium body (choice of either clear or black)
- All hardware and rubber feet

Extrusion

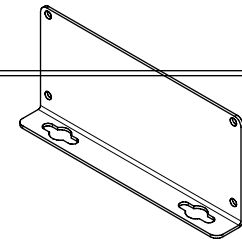
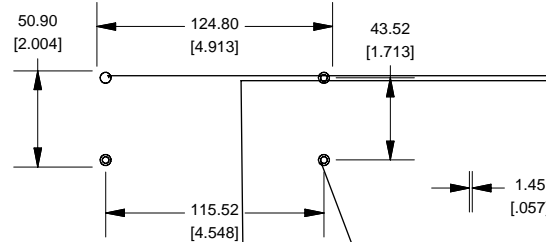
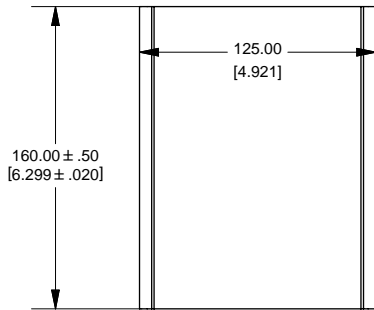


EXTRUSION DESIGNED FOR 120MM WIDE PC BOARD

Slot Details

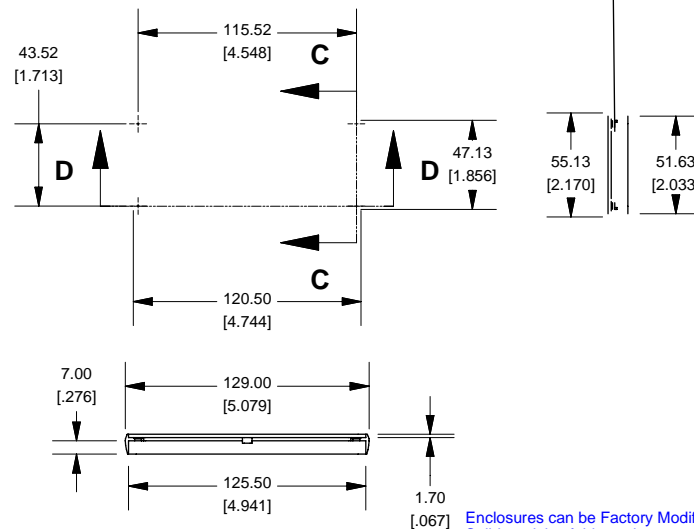


End Plate



OPTIONAL FLANGE END PANEL 1455QF

Open Bezel



NOTE
 Purchased assembly includes box, plastic bezels, end panels, #6
 Taptight screws and self adhesive rubber feet.
 Box made from Extruded Aluminum 6063.
 Bezels made with polycarbonate.

1455Q1601	
PART NUMBERS	
Clear Anodized	1455Q1601
Black Anodized	1455Q1601BK
ACCESSORIES	
See website for accessories.	

HAMMOND MANUFACTURING™
1455Q1601
 www.hammondmfg.com

Enclosures can be Factory Modified (Milling, Drilling, Printing etc.)
 Solid models of this enclosure available in STEP or IGES.
 Contact Factory mjm@hammondmfg.com