



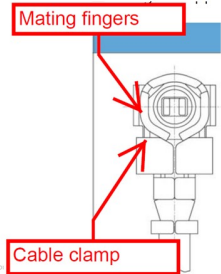
# Product Change Notification (PCN)

PCN Number	502829	Date Issued	May 11, 2017
Reason for Change	Change to Product		
Change Type Description	This letter is to inform you that changes are being made to the part(s) identified in this Notice. The change may affect the fit, form, function or appearance of the parts, or it may result in a change to the specification. The pictures below show an example of the possible differences.		
Reason for Short Notice	Special Request		
Assessment of Change	Test report/Specification Test Report		
Internal Molex Qualification Date	May 27, 2017		
Sample Availability Date (Changed Part)	May 27, 2017		
Planned Implementation Date	November 01, 2017		
Method of Identifying Change	Date code		

RELEASED

### Before Change

- Both PCB and cable connectors plated bright gold over bright nickel
- Cable connector mating fingers and clamp features as shown below

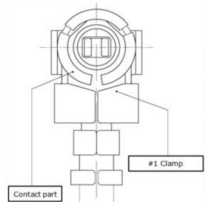


1 Molex Confidential Information © 2016 Molex - All Rights Reserved. Unauthorized Reproduction is Prohibited.



### After Change

- Both PCB and cable connectors plated bright gold over matte nickel
  - Will result in slightly less bright appearance of gold plating
- Mating fingers to have more round appearance
- Cable clamp to have a more tapered appearance at top of clamp
- New tooling being introduced to replace end-of-life tools
- Manufacturing being relocated
- Changes being made for improved manufacturability
  - Will not impact mechanical performance
  - Will not impact electrical performance
  - Will not impact fit or function



2 Molex Confidential Information © 2016 Molex - All Rights Reserved. Unauthorized Reproduction/Distribution is Prohibited.



## Product Change Notification (PCN)

---

You may address any technical inquiries regarding this PCN by sending E-mail to [pcn\\_coordinator@molex.com](mailto:pcn_coordinator@molex.com) or your Local Sales Engineer.

Note: While responding, please retain "**PCN Notification:502829**" in the e-mail Subject line for faster response.

RELEASED

**Molex, LLC**  
2222 Wellington Court  
Lisle, IL 60532  
TEL: 630-969-4747  
[www.molex.com](http://www.molex.com)