

Pin strip - PST 1,0/12-3,5 - 1945193

Please be informed that the data shown in this PDF Document is generated from our Online Catalog. Please find the complete data in the user's documentation. Our General Terms of Use for Downloads are valid (<http://phoenixcontact.com/download>)

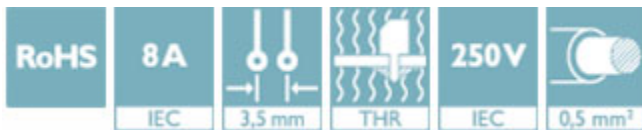


The figure shows a 10-position version of the product

Header, nominal current: 8 A, rated voltage (III/2): 250 V, number of positions: 12, pitch: 3.5 mm, Color: black, Contact surface: Tin, mounting: THR soldering, The maximum current depends on the plug used. The lower of the two current values apply for plug and pin strip. The pin strip is made of highly temperature resistant plastic and is thus suitable for the reflow process.

Why buy this product

- Suitable for wave and reflow soldering processes
- Optimum pin geometry for all COMBICON pin strip connectors



Key Commercial Data

Packing unit	1 STK
Minimum order quantity	100 STK
GTIN	
GTIN	4017918883362
Weight per Piece (excluding packing)	1.420 g
Custom tariff number	85366990
Country of origin	Germany

Technical data

Dimensions

Length	2.8 mm
Pitch	3.5 mm
Dimension a	38.50 mm
Width	41.60 mm
Constructional height	9.2 mm

Pin strip - PST 1,0/12-3,5 - 1945193

Technical data

Dimensions

Height	13 mm
Length of the solder pin	3.8 mm
Pin dimensions	1 mm
Hole diameter	1.2 mm

General

Range of articles	PST 1,0/...-V
Insulating material group	IIIa
Rated surge voltage (III/3)	2.5 kV
Rated surge voltage (III/2)	2.5 kV
Rated surge voltage (II/2)	2.5 kV
Rated voltage (III/3)	160 V
Rated voltage (III/2)	250 V
Rated voltage (II/2)	250 V
Connection in acc. with standard	EN-VDE
Nominal current I_N	8 A (depends on the plug used)
Maximum load current	8 A (depends on the plug used)
Insulating material	PA
Flammability rating according to UL 94	V0
Color	black
Number of positions	12

Standards and Regulations

Connection in acc. with standard	EN-VDE
	CUL
Flammability rating according to UL 94	V0

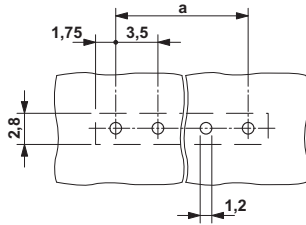
Environmental Product Compliance

China RoHS	Environmentally friendly use period: unlimited = EFUP-e
	No hazardous substances above threshold values

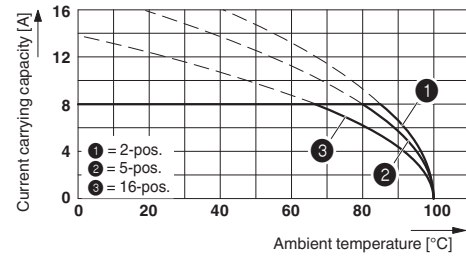
Drawings

Pin strip - PST 1,0/12-3,5 - 1945193

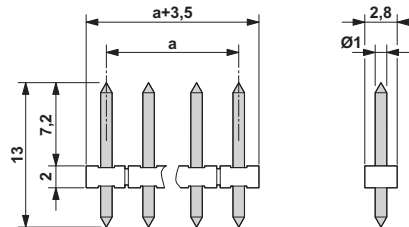
Drilling diagram



Diagram



Dimensional drawing



Classifications

eCl@ss

eCl@ss 4.0	272607xx
eCl@ss 4.1	27260701
eCl@ss 5.0	27260701
eCl@ss 5.1	27260701
eCl@ss 6.0	27260704
eCl@ss 7.0	27440402
eCl@ss 8.0	27440402
eCl@ss 9.0	27440402

ETIM

ETIM 3.0	EC001121
ETIM 4.0	EC002637
ETIM 5.0	EC002637
ETIM 6.0	EC002637

UNSPSC

UNSPSC 6.01	30211801
-------------	----------

Pin strip - PST 1,0/12-3,5 - 1945193

Classifications

UNSPSC

UNSPSC 7.0901	39121432
UNSPSC 11	34131203
UNSPSC 12.01	39121432
UNSPSC 13.2	39121409

Approvals


Approvals


Approvals


UL Recognized / cUL Recognized / SEV / CCA / EAC / cULus Recognized

Ex Approvals

Approval details

UL Recognized		http://database.ul.com/cgi-bin/XYV/template/LISEXT/1FRAME/index.htm	FILE E 60425
		B	
Nominal current IN	10 A		
Nominal voltage UN	300 V		

cUL Recognized		http://database.ul.com/cgi-bin/XYV/template/LISEXT/1FRAME/index.htm	FILE E 60425
		B	
Nominal current IN	10 A		
Nominal voltage UN	300 V		

SEV		https://www.electrosuisse.ch/en/meta/shop/product-certificates.html	IK-3558
Nominal current IN	6 A		
Nominal voltage UN	160 V		

Pin strip - PST 1,0/12-3,5 - 1945193

Approvals

CCA	IK-2681
Nominal current I _N	6 A
Nominal voltage U _N	160 V

EAC		B.01742
-----	--	---------

cULus Recognized		http://database.ul.com/cgi-bin/XYV/template/LISEXT/1FRAME/index.htm
------------------	--	---

Accessories

Additional products

Plug - PTDA 1,5/12-PH-3,5 - 1725237



Plug component, nominal current: 8 A, rated voltage (III/2): 240 V, number of positions: 12, pitch: 3.5 mm, connection method: Push-in spring connection, Color: green, Contact surface: Tin

PCB terminal block - FK-MPT 0,5/12-ST-3,5 - 1914030



Plug component, nominal current: 4 A, rated voltage (III/2): 250 V, number of positions: 12, pitch: 3.5 mm, connection method: Push-in spring connection, Color: green, Contact surface: Tin

PCB terminal block - PT 1,5/12-PVH-3,5 - 1984112



Plug component, nominal current: 8 A, rated voltage (III/2): 200 V, number of positions: 12, pitch: 3.5 mm, connection method: Screw connection with wire protector, Color: green, Contact surface: Tin

Pin strip - PST 1,0/12-3,5 - 1945193

Accessories

PCB terminal block - PT 1,5/12-PH-3,5 - 1984413



Plug component, nominal current: 8 A, rated voltage (III/2): 200 V, number of positions: 12, pitch: 3.5 mm, connection method: Screw connection with wire protector, Color: green, Contact surface: Tin