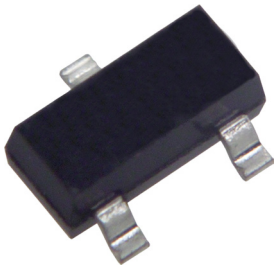


Surface Mount Schottky Barrier Diode



Applications:

- High speed switching applications.
- Circuit protecting : SOT-23
- Voltage clamping

Features:

- SOT-23 Package for surface mount application
- Protects from line to Vcc and line to ground
- Low forward voltage and reverse recovery characteristics
- Epoxy meets UL 94 V-0 flammability rating
- Moisture sensitivity Level 1
- Halogen free available upon request by adding suffix “-HF”
- Mounting Position : Any
- Weight : 0.008 grams (approx.)

Maximum Ratings:

T_A = 25°C unless otherwise specified.

Characteristic	Symbol	Limits	Unit
RMS Reverse Voltage	V _{R(RMS)}	49	V
Repetitive Peak Reverse Voltage Working Peak Reverse Voltage Diode Reverse Voltage	V _{RRM} V _{RWM} V _R	70	V
Forward Continuous Current	I _F	70	mA
Non-Repetitive Peak Forward Surge Current at t _p < 1s	I _{FSM}	100	mA
Power Dissipation	P _D	200	mW
Thermal Resistance, Junction to Ambient Air	R _{θJA}	625	°C/W
Junction and Storage Temperature Range	T _J , T _{stg}	-65 to +150	°C

Electrical Characteristics:

T_A = 25°C unless otherwise specified.

Characteristic	Symbol	Min.	Typ.	Max.	Unit
Device Marking	-	74		-	V
Repetitive Peak Reverse Voltage	V _{RRM}	-	70	-	V
Reverse Breakdown Voltage Tested with 10µA Pulse	V _{(BR)R}	70	-	-	
Leakage Current Pulse Test t _p < 300µs @ For BAS70 V _R = 50V	I _R	-	10	200	nA
Forward Voltage Pulse Test t _p < 300µs at I _F = 1mA at I _F = 15mA	V _F	410 1000	-	-	mV

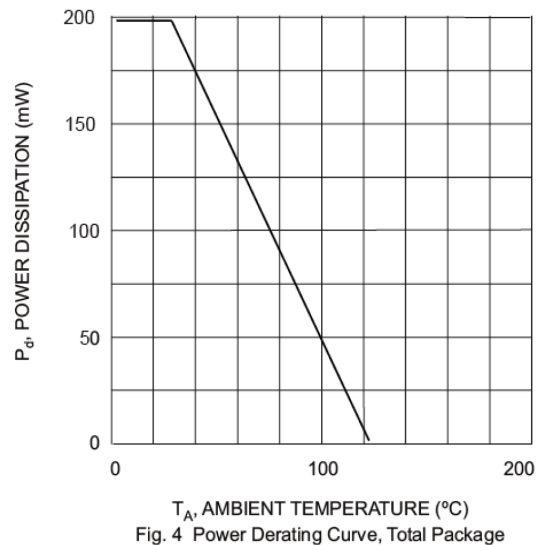
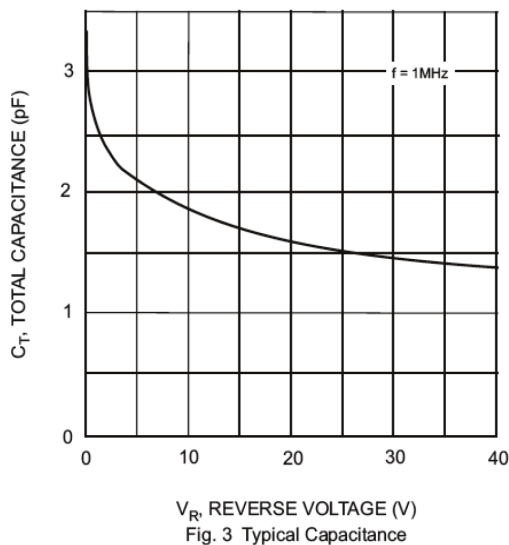
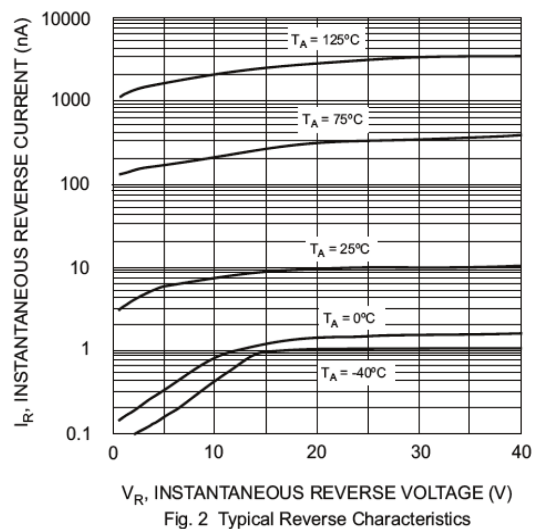
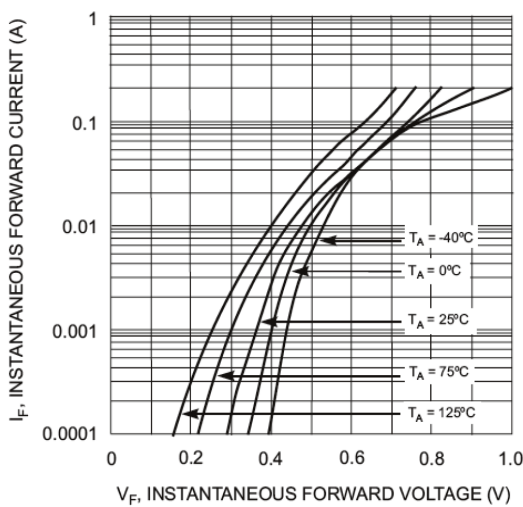
Surface Mount Schottky Barrier Diode



Characteristic	Symbol	Min.	Typ.	Max.	Unit
Reverse Recovery Time from $I_F = 10\text{mA}$ through $I_R = 10\text{mA}$ to $I_R = 1\text{mA}$	t_{rr}	-	-	5	ns
Thermal Resistance Junction to Ambient Air	R_{thJA}	-	-	430	k/W
Capacitance at $V_R = 0\text{V}$, $F = 1\text{MHz}$	C_{tot}	-	-	2	pF

Typical Characteristics:

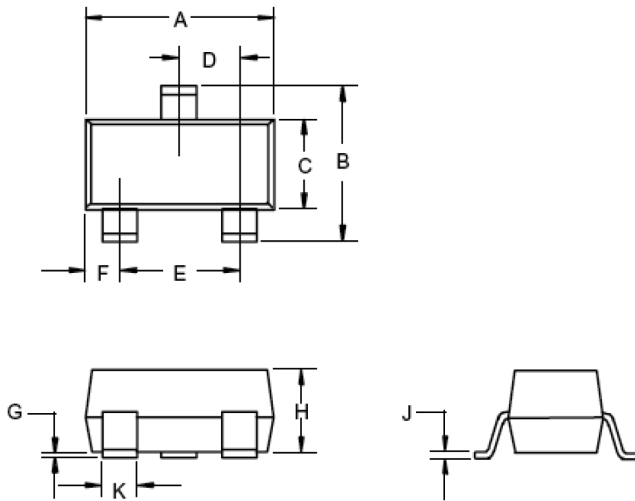
$T_A = 25^\circ\text{C}$ unless otherwise specified.



Surface Mount Schottky Barrier Diode



Dimension:



SOT-23		
Dim.	Min.	Max.
A	2.8	3.04
B	2.1	2.64
C	1.2	1.4
D	0.89	1.03
E	1.78	2.05
F	0.45	0.6
G	0.013	0.1
H	0.89	1.12
J	0.085	0.18
K	0.37	0.51

Dimensions : Millimetres

Part Number Table

Description	Part Number
Surface Mount Schottky Barrier Diode	BAS70-04+

Important Notice : This data sheet and its contents (the "Information") belong to the members of the Premier Farnell group of companies (the "Group") or are licensed to it. No licence is granted for the use of it other than for information purposes in connection with the products to which it relates. No licence of any intellectual property rights is granted. The Information is subject to change without notice and replaces all data sheets previously supplied. The Information supplied is believed to be accurate but the Group assumes no responsibility for its accuracy or completeness, any error in or omission from it or for any use made of it. Users of this data sheet should check for themselves the Information and the suitability of the products for their purpose and not make any assumptions based on information included or omitted. Liability for loss or damage resulting from any reliance on the Information or use of it (including liability resulting from negligence or where the Group was aware of the possibility of such loss or damage arising) is excluded. This will not operate to limit or restrict the Group's liability for death or personal injury resulting from its negligence. Multicomp is the registered trademark of the Group. © Premier Farnell Limited 2016.

