

## Flush-type connector - SACC-SQ-M12FSD-4CON-25F/0,5 - 1440960

Please be informed that the data shown in this PDF Document is generated from our Online Catalog. Please find the complete data in the user's documentation. Our General Terms of Use for Downloads are valid (<http://phoenixcontact.com/download>)




Sensor/actuator flush-type socket, 4-pos., M12, D-coded, front/square flange mounting, with 0.5 m TPE litz wire, 4 x 0.34 mm<sup>2</sup>

### Why buy this product

- ✓ 4 x fixing hole, 2.7 mm
- ✓ With form seal for M2.5 screws
- ✓ Pre-assembled with litz wires for immediate use
- ✓ Customer-specific assemblies and litz wire lengths available
- ✓ Sealed on the litz wire side for optimum leak-tightness
- ✓ All standard pin assignments and codings for signal, data, and power transmission with a uniform design-in design
- ✓ For high transmission safety: shield connection to the housing with optional EMC nut
- ✓ SPEEDCON fast locking system reduces cabling times



### Key Commercial Data

|                                      |   |
|--------------------------------------|---|
| Packing unit                         | 1 STK   |
| GTIN                                 | <br>4 046356 533805 |
| GTIN                                 | 4046356533805   |
| Weight per Piece (excluding packing) | 25.000 g  |
| Custom tariff number                 | 85444290  |
| Country of origin                    | Germany   |
| Note                                 | Made to Order (non-returnable)  |

### Technical data

#### Dimensions

|                 |       |
|-----------------|-------|
| Length of cable | 0.5 m |
|-----------------|-------|

#### Ambient conditions

|                                 |   |
|---------------------------------|---|
| Ambient temperature (operation) | -25 °C ... 85 °C (Plug / socket)                |
|                                 | -40 °C ... 85 °C (without mechanical actuation) |

# Flush-type connector - SACC-SQ-M12FSD-4CON-25F/0,5 - 1440960

## Technical data

### Ambient conditions

|                      |      |
|----------------------|------|
| Degree of protection | IP67 |
|----------------------|------|

### General

|                             |  |
|-----------------------------|--|
| Note                        | The electrical and mechanical data specified assume that the connector pair is correctly locked and mounted. If the connector is unlocked and if there is a danger of contamination, the connector must be sealed using a protective cap > IP54. Influences arising from litz wires, cables or PCB assembly must also be taken into consideration. |
| Rated current at 40°C       | 4 A  |
| Rated voltage               | 250 V  |
| Rated surge voltage         | 2.5 kV   |
| Number of positions         | 4  |
| Insulation resistance       | ≥ 100 MΩ   |
| Coding                      | D - data   |
| Standards/regulations       | M12 connector IEC 61076-2-101  |
| Status display              | No   |
| Overvoltage category        | II   |
| Degree of pollution         | 3  |
| Connection method           | Individual wires   |
| Insertion/withdrawal cycles | > 100  |
| Torque                      | 3 Nm ... 4 Nm (Installation-side)  |
| Mounting type               | Front mounting Square flange   |

### Material

|  |                              |
|--|------------------------------|
| Flammability rating according to UL 94 | V0                           |
| Contact material                       | CuZn                         |
| Contact surface material               | Ni/Au                        |
| Contact carrier material               | PA 66                        |
| Material of grip body                  | Zinc die-cast, nickel-plated |
| Material, knurls                       | Zinc die-cast, nickel-plated |
| Sealing material                       | FKM                          |

### Cable

|                                    |                               |
|------------------------------------|-------------------------------|
| Cable type                         | TPE litz wire                 |
| Conductor cross section            | 0.34 mm <sup>2</sup>          |
| AWG signal line                    | 22                            |
| Conductor structure signal line    | 7x 0.25 mm                    |
| Core diameter including insulation | 1.2 mm ±0.07 mm               |
| Thickness, insulation              | 0.21 mm (Core insulation)     |
| Wire colors                        | Yellow, orange, white, blue   |
| Material conductor insulation      | TPE                           |
| Conductor material                 | Tin-plated Cu litz wires      |
| Standards/specifications           | M12 connector IEC 61076-2-101 |
| Insulation resistance              | ≥ 20 MΩ*km                    |

# Flush-type connector - SACC-SQ-M12FSD-4CON-25F/0,5 - 1440960

## Technical data

### Cable

|                                 |   |
|---------------------------------|---|
| Conductor resistance            | ≤ 57.6 mΩ/m                                     |
| Nominal voltage, cable          | 300 V   |
| Test voltage, cable             | 2000 V AC                                       |
| Ambient temperature (operation) | -40 °C ... 85 °C (cable, fixed installation)    |
|                                 | -25 °C ... 85 °C (cable, flexible installation) |

### Standards and Regulations

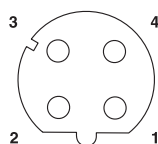
|  |                 |
|--|-----------------|
| Standard designation                   | M12 connector   |
| Standards/regulations                  | IEC 61076-2-101 |
| Flammability rating according to UL 94 | V0              |

### Environmental Product Compliance

|            |   |
|------------|---|
| China RoHS | Environmentally Friendly Use Period = 50  |
|            | For details about hazardous substances go to tab "Downloads", Category "Manufacturer's declaration" |

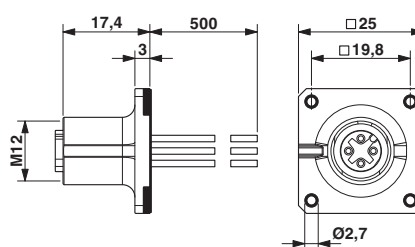
## Drawings

Schematic diagram

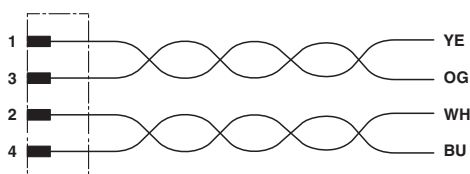


Pin assignment M12 socket, 4-pos., D-coded, female side

Dimensional drawing



Circuit diagram



Contact assignment of the M12 socket

## Classifications

eCl@ss

|            |          |
|------------|----------|
| eCl@ss 4.0 | 27140815 |
| eCl@ss 4.1 | 27140815 |

# Flush-type connector - SACC-SQ-M12FSD-4CON-25F/0,5 - 1440960

## Classifications

### eCl@ss

|            |          |
|------------|----------|
| eCl@ss 5.0 | 27143423 |
| eCl@ss 5.1 | 27143423 |
| eCl@ss 6.0 | 27279220 |
| eCl@ss 7.0 | 27440103 |
| eCl@ss 8.0 | 27440103 |
| eCl@ss 9.0 | 27440102 |

### ETIM

|          |          |
|----------|----------|
| ETIM 2.0 | EC001297 |
| ETIM 3.0 | EC002061 |
| ETIM 4.0 | EC002061 |
| ETIM 5.0 | EC002061 |
| ETIM 6.0 | EC002061 |

### UNSPSC

|               |          |
|---------------|----------|
| UNSPSC 6.01   | 31251501 |
| UNSPSC 7.0901 | 31251501 |
| UNSPSC 11     | 31251501 |
| UNSPSC 12.01  | 31251501 |
| UNSPSC 13.2   | 39121413 |

## Approvals


### Approvals

#### Approvals

cULus Recognized / UL Recognized / EAC

#### Ex Approvals

### Approval details

|                                |   |  |
|--------------------------------|---|--|
| cULus Recognized               |  | <a href="http://database.ul.com/cgi-bin/XYV/template/LISEXT/1FRAME/index.htm">http://database.ul.com/cgi-bin/XYV/template/LISEXT/1FRAME/index.htm</a> E221474-20140616 |
| mm <sup>2</sup> /AWG/kcmil     | 22-20   |  |
| Nominal current I <sub>N</sub> | 4 A   |  |
| Nominal voltage U <sub>N</sub> | 250 V   |  |

# Flush-type connector - SACC-SQ-M12FSD-4CON-25F/0,5 - 1440960

## Approvals

|                                |       |   |               |
|--------------------------------|-------|---|---------------|
| UL Recognized                  |       | <a href="http://database.ul.com/cgi-bin/XYV/template/LISEXT/1FRAME/index.htm">http://database.ul.com/cgi-bin/XYV/template/LISEXT/1FRAME/index.htm</a> | FILE E 118976 |
| mm²/AWG/kcmil                  | 26-20 |   |               |
| Nominal current I <sub>N</sub> | 4 A   |   |               |
| Nominal voltage U <sub>N</sub> | 250 V |   |               |

|     |  |         |
|-----|--|---------|
| EAC |  | B.00767 |
|-----|--|---------|

## Accessories

### Accessories

#### Protective cap

Screw plug - PROT-M12 - 1680539



An M12 screw plug for the unoccupied M12 sockets of the sensor/actuator cable, boxes and flush-type connectors

Screw plug - PROT-M12 SH - 1503302



An M12 screw plug for the unoccupied M12 sockets of the shielded sensor/actuator cable, boxes and flush-type connectors

Screw plug - PROT-M12 FB - 1555538



M12 high-grade steel screw plug, for unoccupied M12 sockets of the sensor/actuator cables, boxes and flush-type connectors for the food industry