

LEDs & INDICATORS

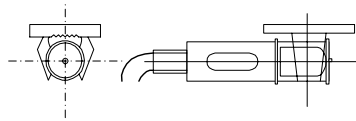
580 Series

- Open ended body with 90° snap on lens
- Stripped 6mm wire termination 200mm long, PVC
- Neons 240V 0.8mA as standard
- Polysulphone body and lens
- Red, green and amber lens colour options as standard
- Maximum working temperature 105°C
- Custom wire lengths and specification to order

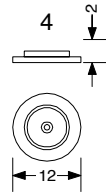


	TYPE NO.	IND580	4	05 - 240	- T / XXX
580 Series Indicator	580				
Lens Type	4				
Stripped wire 200mm long	05				
Neon 240V 0.8mA, red wire	240				
Transparent lens	T				
Lens colour Red	RED				
Lens colour Green	GRN				
Lens colour Amber	AMB				

Body Profile



Lens Options



PCB
TERMINAL
BLOCKS

INTER-
CONNECTION

FUSES &
FUSE-
HOLDERS

LEDs &
INDICATORS

MINIATURE
SWITCHES

LIMIT &
SAFETY
SWITCHES

CONTROL
PRODUCTS

INTERFACE
MODULES &
SUPPORTS

RELAY
BASES

DIN RAIL
ENCLOSURES

BATTERIES

SOLAR
PANELS

TRANS-
FORMERS