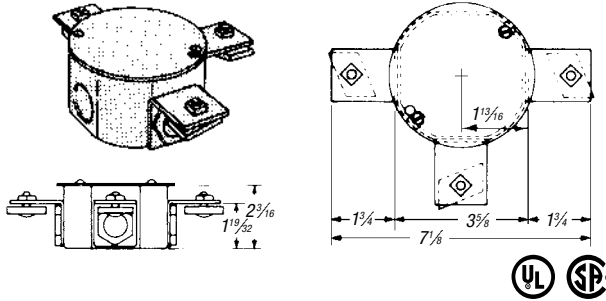


Surface Raceway and Lighting Support Systems

G-2003 Junction Box

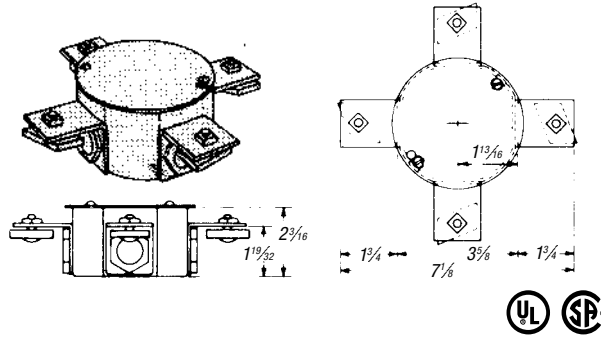
Complete with cover, locknuts, nipples and end caps. Type "T" junction box for three raceway channels. Accepts standard devices and covers for 4" octagon outlet boxes.



CAT. NO.	DESCRIPTION	WT. LBS./C
G 2003	Galv-Krom® Finish	140

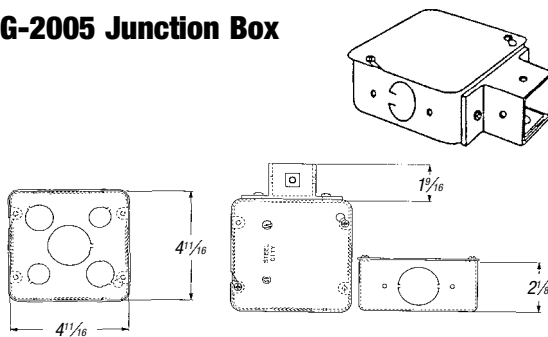
G-2004 Junction Box

Complete with cover, locknuts, nipples and end caps. Type "X" junction box for four raceway channels. Accepts standard devices and covers for 4" octagon outlet boxes.



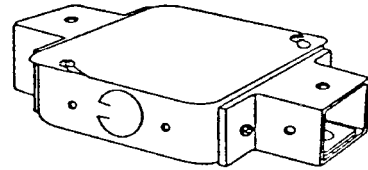
CAT. NO.	DESCRIPTION	WT. LBS./C
G 2004	Galv-Krom® Finish	150

G-2005 Junction Box



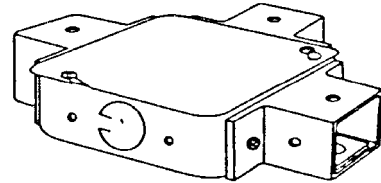
CAT. NO.	DESCRIPTION	WT. LBS./C
G2005	Galv-Krom® Finish	189

G-2006 Junction Box



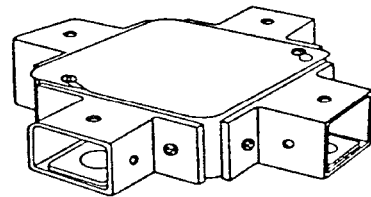
CAT. NO.	DESCRIPTION	WT. LBS./C
G2006	Galv-Krom® Finish	225

G-2007 Junction Box



CAT. NO.	DESCRIPTION	WT. LBS./C
G2007	Galv-Krom® Finish	261

G-2008 Junction Box



CAT. NO.	DESCRIPTION	WT. LBS./C
G2008	Galv-Krom® Finish	290

Surface Raceway and Lighting Support Systems

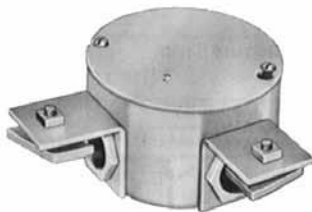
Raceway Junction Boxes



G 2000
Type "E" 100 lbs./C



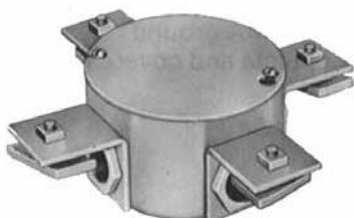
G 2001
Type "C" 121 lbs./C



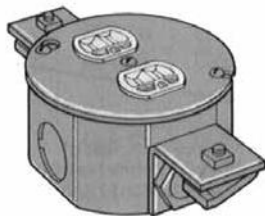
G 2002
Type "L" 90°



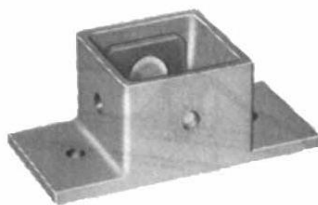
G 2003
Type "T" 140 lbs./C



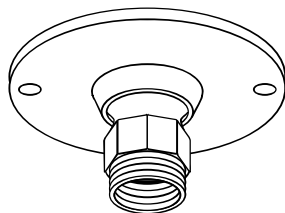
G 2004
Type "X" 150 lbs./C



G-2001
Junction Box with 5402-LR
outlet box cover and field
mounted duplex receptacle.



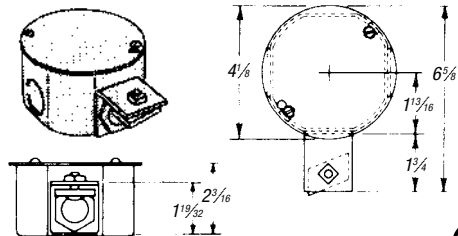
G-1007
36 lbs./C



G-1033
For 1/2" or 3/4" conduit feed
from outlet box 35 lbs./C

G-2000 Junction Box

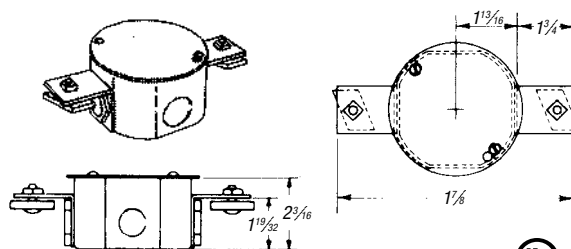
Complete with cover, locknuts, nipples and end caps. Type "E" dead-end junction box for raceway channel. Accepts standard devices and covers for 4" octagon outlet boxes.



CAT. NO.	DESCRIPTION	WT. LBS./C
G 2000	Galv-Krom® Finish	123

G-2001 Junction Box

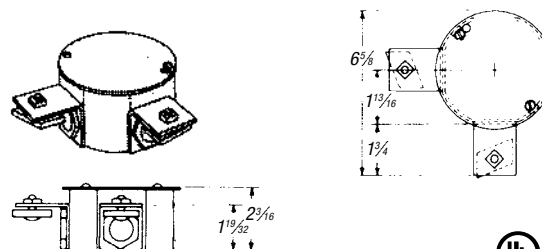
Complete with cover, locknuts, nipples and end caps. Type "C" straight-through junction box for two raceway channels. Accepts standard devices and covers for 4" octagon outlet boxes.



CAT. NO.	DESCRIPTION	WT. LBS./C
G 2001	Galv-Krom® Finish	147

G-2002 Junction Box

Complete with cover, locknuts, nipples and end caps. Type "L" 90° junction box for two raceway channels. Accepts standard devices and covers for 4" octagon outlet boxes.



CAT. NO.	DESCRIPTION	WT. LBS./C
G 2002	Galv-Krom® Finish	120