

## IEC Appliance Connector C14 with Line Switch 1- or 2-pole

**NEW**


C14



70° C


**Description**

- Panel Mount:
- Screw-on version from front or rear side, snap-in version from front side
- 2 Functions:
- Inlet Protection class I, Line switch 1- or 2-pole
- Quick connect terminals 4.8 x 0.8 mm
- Alternative: version with line filter [DC12](#)
- Substitute for type [KEB1](#); [KEB2](#)

**Characteristics**

- Ultra-compact design
- All single elements are already wired
- Unwired versions available on request
- Line switch non-illuminated or illuminated
- Ideal for application with high transient loads
- Qualified for use in equipment according IEC/EN 60950

**Other versions on request**

- Snap-in, panel thickness 1 and 3 mm
- Unwired versions
- Solder terminals
- Line switch with other rocker marking
- Line switch 1-pole
- For protection class II

**Weblinks**

 Approvals: <http://www.schurter.com/approvals>

 RoHS: <http://www.schurter.com/rohs>
**Technical Data**

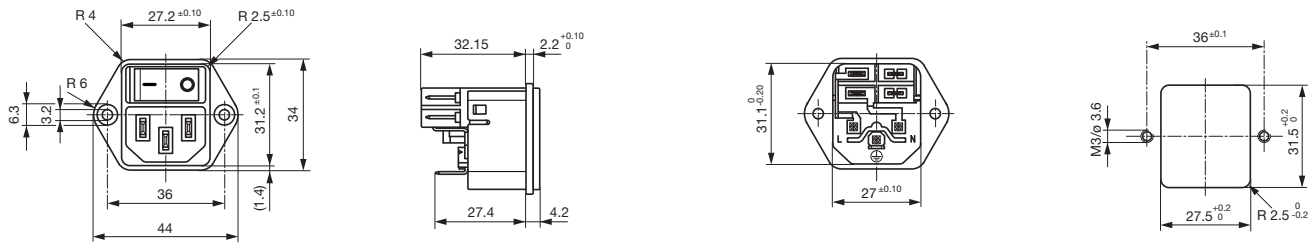
Ratings IEC	10 A / 250 VAC; 50 Hz
Ratings UL/CSA	12 A / 250 VAC; 50/60 Hz
Dielectric Strength	> 2.5 kVAC between L-N > 3 kVAC between L/N-PE (1 min/50 Hz)
Allowable Operation Temp.	-25 °C to 70 °C
Degree of Protection	from front side IP 40 acc. to IEC 60529
Protection Class	Suitable for appliances with protection class I acc. to IEC 61140
Terminal	Quick connect terminals 4.8 x 0.8 mm
Panel Thickness s	Screw-on: max 6 mm Mounting screw torque max 0.5 Nm Snap-in: 1/1.5/2/2.5/3 mm
Material: Housing	Thermoplastic, black, UL 94V-2

Appliance-Inlet /-Outlet	C14 acc. to IEC/EN 60320-1, UL 498, CSA C22.2 no. 42 (for cold condition) pin-temperature 70 °C, 10 A, Protection class I
Line Switch	Rocker switch 1 or 2 pole, non-illuminated or illuminated, acc. to IEC 61058-1 <a href="#">Technical details</a>

## Dimensions

## Screw-on mounting

Length 44 mm



## Snap-in mounting

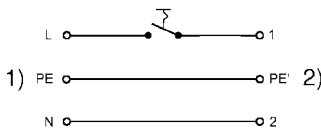
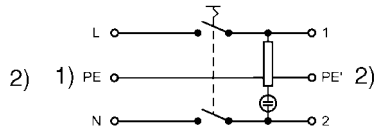
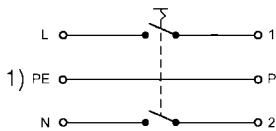


## Diagrams

## Line switch non-illuminated 2-pole

## Line switch illuminated 2-pole

## Line switch non-illuminated 1-pole

1) Line  
2) Load1) Line  
2) Load1) Line  
2) Load

## Variants

with internal connections

Panel mounting	Panel Thickness s [mm]	Line Switch	Illumination	Color	Order Number
Snap-in	1.5	2-pole	●	red	DC11.0021.201
Snap-in	2	2-pole	●	red	DC11.0021.301
Snap-in	2.5	2-pole	●	red	DC11.0021.401
Snap-in	1.5	2-pole	●	green	DC11.0031.201
Snap-in	2	2-pole	●	green	DC11.0031.301
Snap-in	2.5	2-pole	●	green	DC11.0031.401
Snap-in	1.5	1 pole	-	-	DC11.0001.203
Snap-in	2	1 pole	-	-	DC11.0001.303
Snap-in	2.5	1 pole	-	-	DC11.0001.403
Snap-in	1.5	2-pole	-	-	DC11.0001.201
Snap-in	2	2-pole	-	-	DC11.0001.301
Snap-in	2.5	2-pole	-	-	DC11.0001.401
Screw-on	-	2-pole	●	red	DC11.0021.001
Screw-on	-	2-pole	●	green	DC11.0031.001
Screw-on	-	1 pole	-	-	DC11.0001.003

Panel mounting	Panel Thickness s [mm]	Line Switch	Illumination	Color	Order Number
Screw-on	-	2-pole		-	DC11.0001.001

Packaging unit 50 Pcs

#### Accessory

##### Description



Assorted Covers



Cord retaining kits