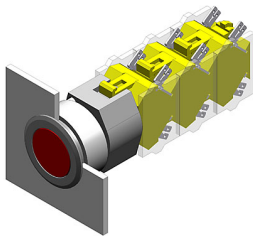


EAO – Your Expert Partner for Human Machine Interfaces

704.012.518 - Pushbutton actuator

704.012.518 - Pushbutton actuator



Attention: The preview is based on a sample product. This can differ from your current configuration.

Mounting

Mounting cut-out Ø 30,5 mm
Design flush

Front

Front shape round
Front dimension Ø 35 mm
Front bezel colour natural anodized
Front bezel material Aluminium

Other Attributes

Weight 0,051 kg

Operating-/Indication part

Lens optics transparent
Lens material Plastic
Lens colour green
Lens profile flat
Lens illumination non-illuminative

IP-Rating

Front protection IP65

Actuator

Switching action Momentary
Housing material Plastic
Housing colour grey

Switching element

max. number of switching elements 3

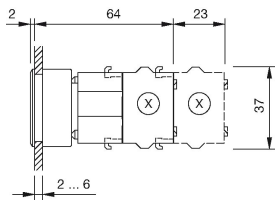
Function

Pushbutton

EAO – Your Expert Partner for Human Machine Interfaces

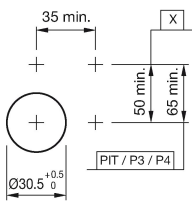
704.012.518 - Pushbutton actuator

Dimensions



X = Screw terminal

Mounting cut-outs



PIT = Push-in terminal

Wiring diagram



Additional information

Max. 3 switching elements can be clipped on
The colour of anodized aluminium parts can vary due to technical production reasons

Legend

Switching action: B = Momentary