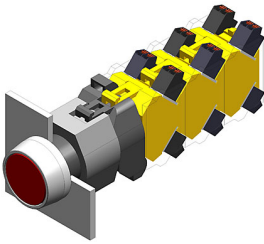


# EAO – Your Expert Partner for Human Machine Interfaces

## 704.032.5 - Illuminated pushbutton actuator

### 704.032.5 - Illuminated pushbutton actuator



*Attention: The preview is based on a sample product. This can differ from your current configuration.*

#### Mounting

Mounting cut-out Ø 22,3 mm  
Design raised

#### Front

Front shape round  
Front dimension Ø 29 mm  
Front bezel colour natural anodized  
Front bezel material Aluminium

#### Other Attributes

Weight 0,056 kg

#### Operating-/Indication part

Lens optics transparent  
Lens material Plastic  
Lens colour green  
Lens profile flat  
Lens illumination illuminative

#### IP-Rating

Front protection IP65

#### Connection Method

Terminal Screw terminal

#### Actuator

Switching action Momentary  
Housing material Plastic  
Housing colour grey

#### Switching element

max. number of switching elements 3

#### Illumination

LED colour green

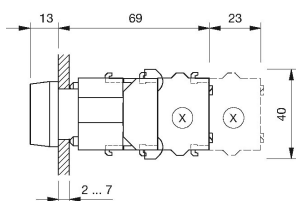
#### Function

Illuminated pushbutton

# EAO – Your Expert Partner for Human Machine Interfaces

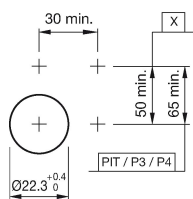
## 704.032.5 - Illuminated pushbutton actuator

### Dimensions



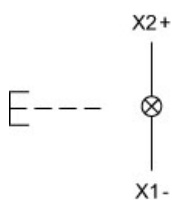
X = Screw terminal

### Mounting cut-outs



PIT = Push-in terminal

### Wiring diagram



### Additional information

Frontring with protective cover to be mounted with a torque of 40 Ncm onto actuator  
Max. 3 switching elements can be clipped on  
The colour of anodized aluminium parts can vary due to technical production reasons

### Legend

Switching action: B = Momentary