

Category 5e Shielded Keystone Panel Mount Coupler



Category 5e Shielded Keystone Panel Mount Coupler (FACK2Spmmc)

Features

- High performance data throughput, meets Category 5e data transfer rates
- Easily mounted into panels of virtually any thickness
- Die cast adaptor is robust and ensures easy mounting (into standard cut-out) and reliable earthing
- Plug insertion life ≥ 750 times
- Operating temperature: $-40^{\circ}\text{C} \sim +66^{\circ}\text{C}$

Packaging:

- Supplied in individual polythene bags then in bags of 20

Specifications

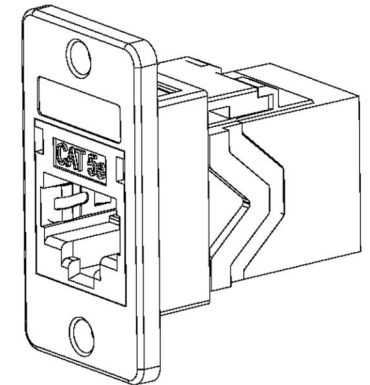
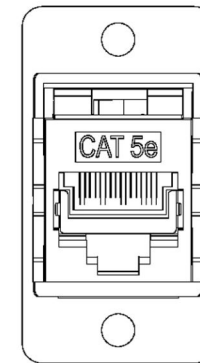
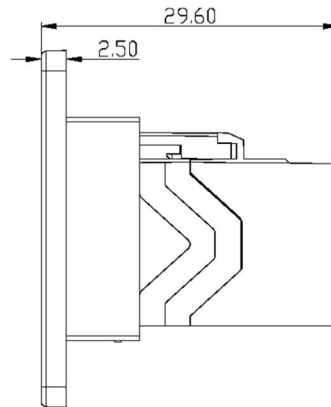
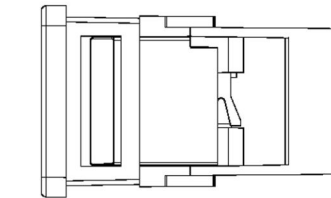
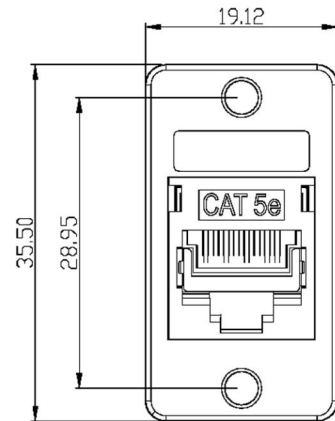
- Materials:
 - Coupler:**
 - Housing: Nickel plated zinc alloy
 - Contacts: Phosphor bronze, $50\mu\text{m}/1.27\mu\text{m}$ gold plated over contact area
 - Earthing lug material: Stainless steel SUS304
 - Panel mount adaptor:** Zinc alloy
- Colour: Silver
- Dimensions: 35.5 x 19.12 x 29.6mm approx. (H x W x D)
- Assembled weight (without screws): 26g
- Supplied with 2 pairs of screws
 - 2 x round head nickel-plated steel self-tapping screws
 - 2 x round head (4.40 x 1/4") machine screws

For more detailed coupler specifications please see the webpage below:
http://www.tuk.co.uk/tuk_live/product_details.php?category_id=&pId=246

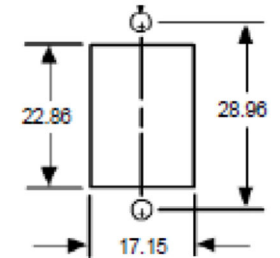


Code: FACK2Spmmc

ROHS Compliant

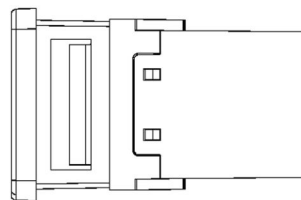


Requirements for cut-out:



ELECTRICAL
Current rating: 1.5A
Dielectric withstanding voltage: 1000VDC
Insulation resistance: 500MΩ min.
Contact resistance: 20mΩ max.

MECHANICAL
Materials: Zinc alloy
Cosmetic: Nickel electroplating + sandblasting
RJ45 jack contact: 50μ"/1.27μm gold plated over nickel over phosphor bronze



TUK Ltd, Unit 4, Wimbledon Stadium Business Centre, Riverside Road, London, SW17 0BA

Tel: 020 8946 6688 Fax: 020 8879 7410 Email: sales@tuk.co.uk Website: www.tuk.co.uk