

A72 DVR guide

blupont™

blupont Quick Operation Guide V1.3

Thank you for choosing this blupont product. This quick operation guide will help you get set up and show you the basics of how to use the blupont A72. You will find that the product is easy to use and offers the perfect solution for your security concerns. The A72 range provides the user with HD picture quality, which can be viewed by you anywhere in the world, the A72 is sure to meet your demands.

Contents:

1. Section 1 – Installation of equipment (including diagram)
2. Section 2 – DVR Set-up Wizard (Machine/Network/Mobile)
3. Section 3 – Record and Playback
4. Section 4 – CMS Software download and Set up
5. Section 5 – IE Remote Access to DVR

Installation of Equipment (Section 1)

Your kit, depending on the model purchased, consists of:

- ✓ **Digital Video Recorder with Hard Drive installed & Formatted**
- ✓ **Power Adapter(s)**
- ✓ **Power Splitter**
- ✓ **CCTV Camera(s)**
- ✓ **Power & Video 18m CCTV Cable(s)**
- ✓ **Mouse**
- ✓ **Remote Control**

For correct operation, depending on your configuration and/or installation you may need:

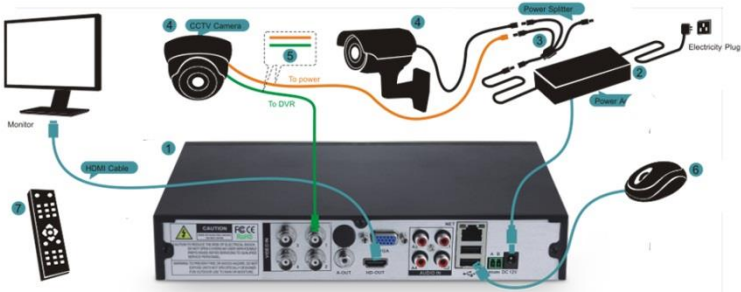
- **HDMI/VGA Cable**
- **HDMI/VGA Display Monitor**
- **Network Cable (If you want to access system remotely)**

NOTE: *View Diagram on the next page*



Included in this CCTV kit,
you should have received the following:

- 1 DVR-Video Recorder including Hard Drive
- 2 Power Adapter
- 3 Power Splitter
- 4 CCTV Cameras
- 5 Power & Video CCTV Cables
- 6 Mouse
- 7 Remote Control



Please Note:
You will need a monitor that can connect to the DVR using HDMI or VGA cable

Make sure that your kit is working

<p>STEP 1 Connect your monitor to the DVR unit using an HDMI cable</p>	<p>STEP 2 Connect your CCTV Cameras to the Power Video Cable</p>
<p>STEP 3 Connect the Power Adapter to the Power splitter</p>	<p>STEP 4 Connect the other side of the Power Video Cable the Connector to the Power splitter Plug</p>
<p>STEP 5 Connect the other side of the Power Video Cable Video Connector to the Video Plug on the DVR</p>	<p>STEP 6 Connect the Power Adapter to the DVR</p>



For Tech Support Call
0203-7714738

To connect power to the DVR: If you have been supplied with one power adapter (it would be within the DVR box) connect this to the power splitter supplied and connect the splitter ends to the DVR and cameras. If you have been supplied with two power adapters, use the power adapter in the DVR box to power the DVR. Then connect the additional power adapter to the power splitter supplied to power the cameras. Using the power/video CCTV cable plug one end to the Camera (both DC Plug and BNC plug) and plug the other end to a BNC port on the DVR and the power splitter supplied. This will result in power being provided to the camera and Video Data being provided to the DVR.

Connect DVR via HDMI/VGA port to a suitable display monitor. **NOTE:** Please be aware – If connected directly to a TV you may need to adjust the resolution first through the DVR to be compatible with the TV. In this case, connect it first to a display monitor to view and adjust the DVR's Display settings. Once connected to the Display Monitor turn the DVR on and wait for the boot up screen to finish loading access the **'Main Menu'** by right clicking on the home screen and click **'main menu'** from the drop down box then click **'systems'** then click **'Display'** here you can adjust the **'resolution'** output to one suitable to work with your TV.

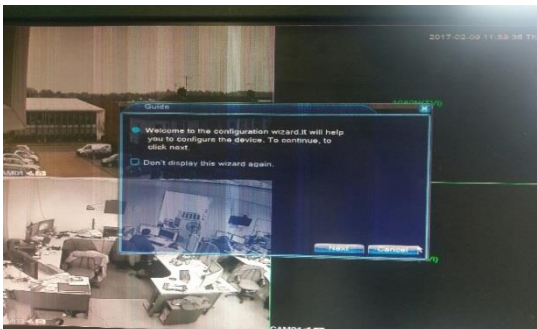
To enable network/local/remote/mobile viewing, plug a Network Cable from the DVR's RJ45 port to an RJ45 port on your Router. Once connected, the LED lights on the RJ45 port on the back of the DVR will begin to flash with green and yellow LED's. This means that the connection was successful. **NOTE:** To set up remote login you will still need to follow the instructions in the next section.

Connect the supplied mouse to the DVR via one of the two USB ports on the rear of the DVR. This will enable you to easily navigate the DVR.

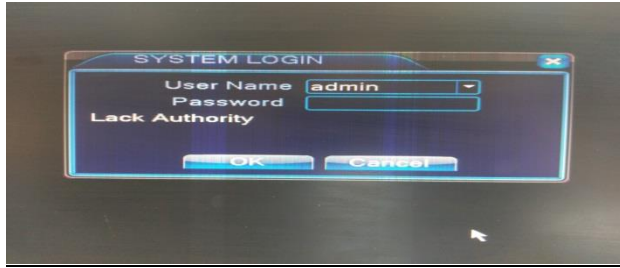
Machine/Network/Mobile Set up (Section 2):

1. Once power is connected to the DVR a red LED light on the front will confirm it is on. Wait whilst the DVR boots up with the blupont Logo.
2. It will then take you to the Set-up Wizard. See picture below. If the cameras have already been connected, with the CCTV cables provided, you will now be able to view the cameras in the background of the main page, whilst the set-up wizard (shown below), is running. Click **'Next'** to continue with the DVR set up Wizard.

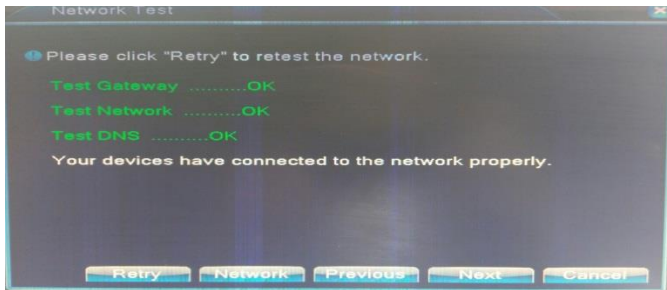
NOTE: to exit the set-up wizard at any time click **'cancel'**. This will take you to the main page showing camera channels. To re-access the set-up wizard on the main page **right click** for the drop down menu → click **'Guide'** → then the set-up wizard will begin again.



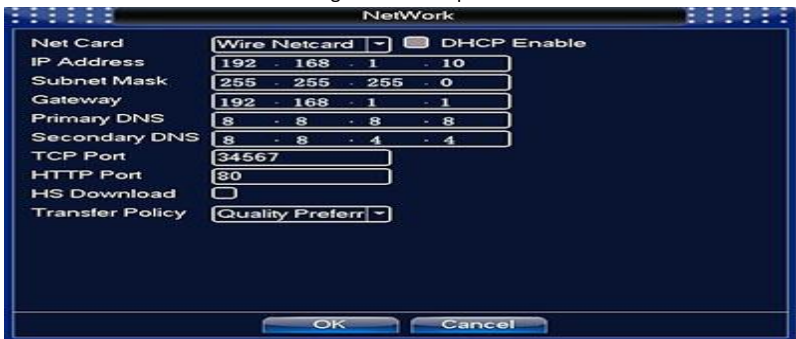
3. System login will then appear. See picture below. Keep the username as **'Admin'** and the password blank (these can be changed in the main settings later). Click **'OK'**.



4. Configure the date and time, then click 'Next'.
5. Network Test will now begin. If the DVR connects automatically it will confirm all connections are OK. See picture below. Click 'Next'.

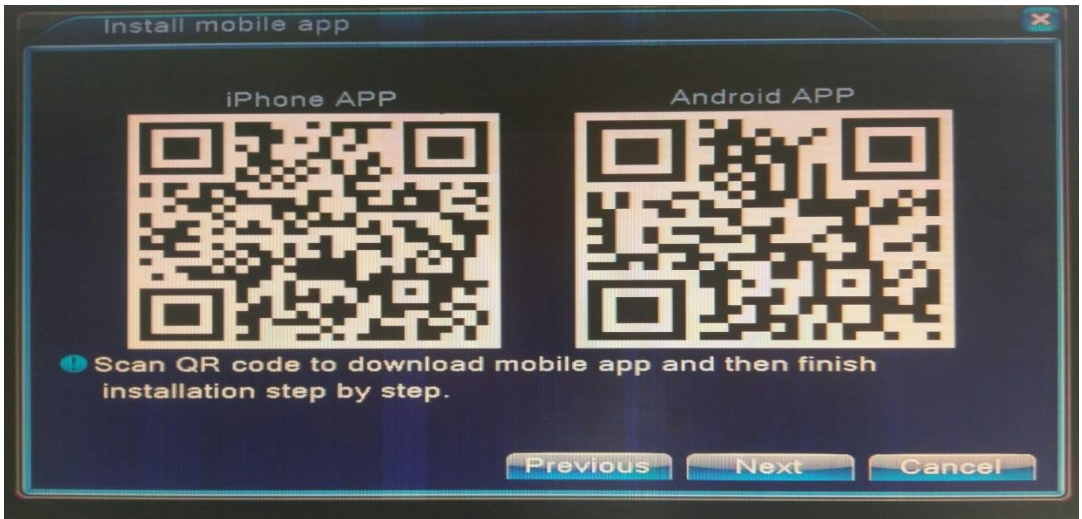


6. If the network test fails, it will be because the default IP address of the DVR (192.168.1.10) as shown below is already allocated on your network. Click 'network' and configure with an IP address you know is available and the correct gateway address for your router. **Alternatively, tick the 'DHCP Enable' and the DVR will automatically assign a free IP address on your Network.** See picture below (example only). Once completed click 'ok' and then click 'retry' to test the connection. Once all the test results confirm it is 'OK' click 'next' to advance to the next stage of the set-up wizard.

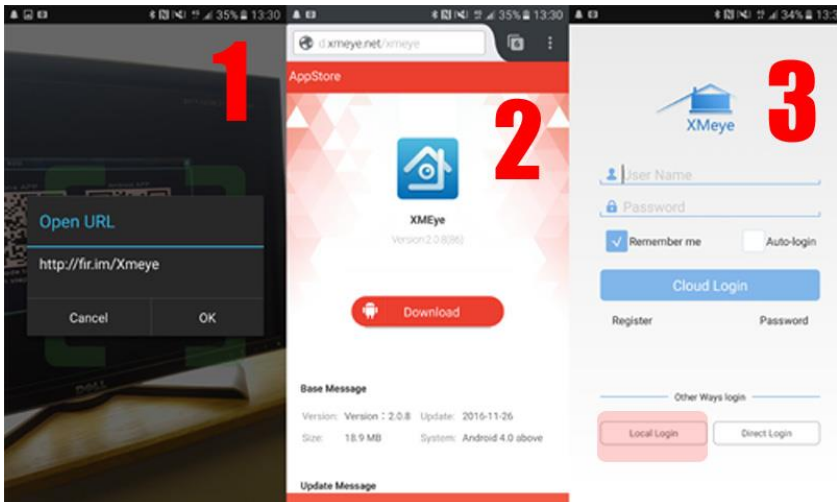


7. Using Mobile/Tablet application [xmeye](#)
 - a. To connect the device to your smartphone/tablet for remote viewing. **Scan the QR Code** which is applicable to your phone model (Android and IOS only). See picture. **NOTE:** If you do

not have a QR code Scanner app on your phone → search 'QR code scanner' in android play store or Apple app store → download the app and open.

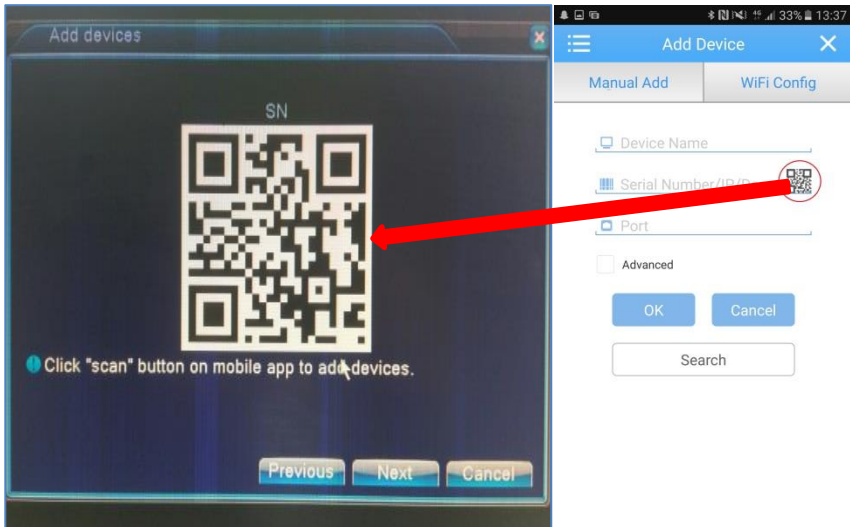


- b. This will bring up a series of prompts to get the app working. 1. Follow the link, click 'OK' → 2. Download the app, click 'download' → 3. Open the app once downloaded and click 'local login' (circled red).
- c. **NOTE:** If the Scan does not work, search and download *xmeye* on android Playstore or Apple App store → download the app → open the app on your mobile device.
- d. Once you have clicked 'local login' → follow directions to add the DVR device by clicking '+' as prompted by the app → then input a 'device name' of your choosing → click the QR Code

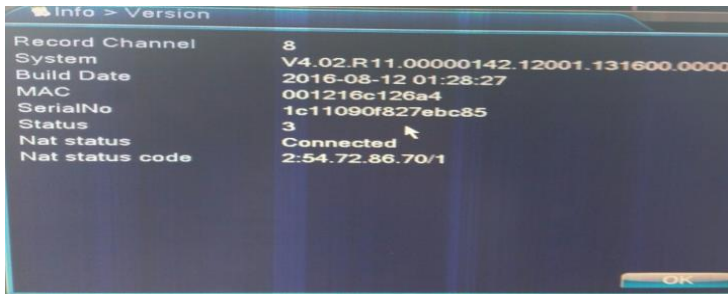


(as shown in the image below) to bring up the QR code scanner to instantly input the DVR's unique serial number.

- e. Click next on the DVR to view the DVR's unique Serial Number in a QR code format. See example picture below. Scan this code through the app.



- f. This will connect the device via the cloud to allow remote viewing from anywhere in the world. From here you can take snap shots and record videos to your phone, in real time.
NOTE: Should this fail you can access the serial number by exiting the set-up wizard on the DVR by **clicking 'Cancel'** → on the main page **right click** for the drop down menu → click **'main menu'** → then **Click 'Info'** → then **click 'Version'**. From there you will find system information. See example picture below.



- 8. Set up wizard is now complete → **click 'OK'** → This will take you to the main page showing camera channels from where you will now be able to use the DVR system.

Record/Playback (Section 3):

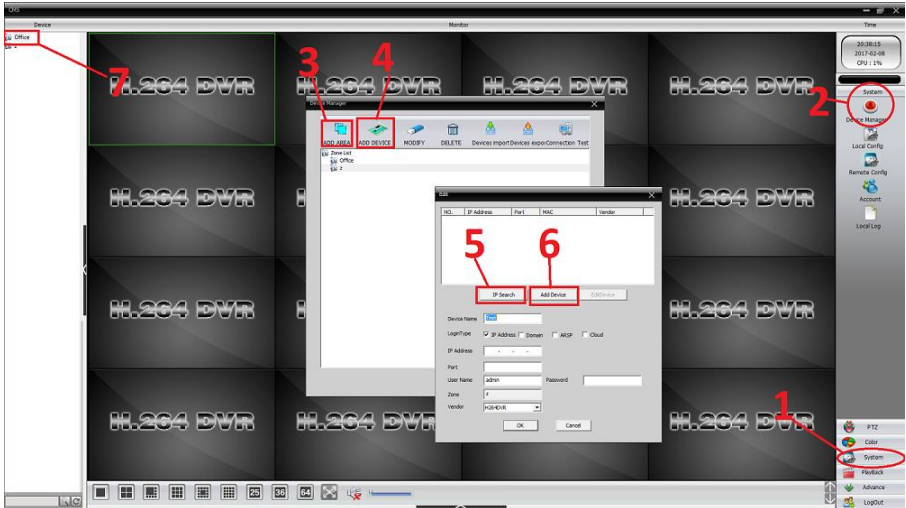
This next section will explain how to access the record and playback functions. In addition, it will explain how to access the DVR's motion detection settings within the main menu.

- Using the mouse **right click** on the main page (showing all camera channels) → this will bring up a drop down menu showing a variety of option. You will see **'Record Mode'** and **'Playback'**
 - To record: Click **'Record mode'** → here you can set the record mode to 'Schedule' (record only at pre-set schedules – see NOTE below on how to do this), 'Manual' (record constantly), 'don't record' → you can select channels individually or all at once → then Click **'OK'** to confirm. **Note:** *to set the Schedules for the cameras right click on main page → then click on 'main menu' → then click on 'Record' icon → then Click on the 'Record Config' icon → from here you will be able to see the options to amend the scheduled recording by camera channel, day and time.*
 - To playback: Click **'Playback'** → here you can view all your recordings with several search functions by date and time → to exit and return to the main menu Click **'x'** in the top right corner.
- To set motion detection go to the 'Main menu' → click the **'Alarm'** icon → click the **'Motion detection'** Icon. From here you can set each channel's motion detection **'region'**, **'sensitivity'** and **'period'** (scheduling) of the times you want the DVR to use this function.

CMS (Section 4):

CMS is software that will enable you to access your DVR from a Computer on the same network. Here you will be able to Record, Playback and access the DVR's settings to change them as if you were doing it directly from the DVR itself. The numbers in **Red** below will match with the numbers on the CMS diagram.

To download the software, you will need to go to [<http://support.dynamode.com/wp-content/uploads/2017/02/Xmeye-CMS.zip>] and download the CMS software. Once downloaded, open the file and Install on the computer. Once installed, open the program → Use default user name (super) and leave the password blank → Click **'log in'**. Once open you will see in the bottom right **1. Click 'System' → 2. Click 'Device manager' → 3. Click 'Add area'**, choose a name and add it → then highlight the area you have just named → **4. Then Click 'Add Device' → 5. Click 'IP search'** for the program to automatically find the DVR on your network. **NOTE:** *It may take several attempts for it to search and find the IP address of the DVR. If it does not find it on the first attempt, click 'IP search' again. If it does not find the DVR on the network after several attempts, add the information in manually by inputting the DVR's IP address and Media port which can be found on the DVR's Network settings. Then follow the instructions as before by adding the DVR's username and password. → once it comes up click **6. 'Add Device'** to automatically add the DVR to CMS **7.** Once added it will appear in the top left → **Highlight the DVR's name and right click** to see viewing options → click **'connect all videos'** to view all the channels.*



To access and configure the DVR settings from the CMS software **click 'System'** in the bottom right → then **click 'remote config'** in the menu which appears on the right-hand side → from here select the device and you will then be able to configure all the DVR's settings through the CMS software.

Internet Explorer remote login - xmeye (Section 4):

To access your DVR remotely from anywhere in the world using internet explorer go to www.xmeye.net → **install 'active X'** when prompted → download file → **click 'run file'** to install → now **click to login** in '**by device**' on the main xmeye website page → enter DVR unique serial number **NOTE: see note on page 5 to find out how to get the DVR's unique details and serial number** → enter your username and password **NOTE: use the DVR default username and password if you have not changed it** → then enter the Verification code where prompted → **click 'login and preview'**. If prompted **click 'allow'** to run active x → you will then be taken back to the log in screen where you will need to enter your details one more time, as before, to access the DVR with active X now properly functioning on IE. You can now access the DVR remotely with access to all its settings by **clicking on the 'Device Cfg'** button on the menu at the top of the browser page. You will now be able to live view.

NOTE: If using Windows 10 you will need to locate the search bar in the bottom left corner → Type in Internet Explorer → once this is found click to open and begin the above process to log in.

CCTV and Video Recording General Amendment

Using Domestic CCTV Systems within Your Property

To help get the maximum utility from the CCTV system and to help keep good Relationships with any neighbours and/or adjacent businesses or occupied buildings (either private or public); owners of CCTV systems should be aware of any local/regional/country law's that may be applicable to the use of CCTV.

For the United Kingdom, including England and Wales:-

1. An individual has the right to protect their property and this can be done with CCTV systems and/or cameras. However the SCC (Surveillance Camera Commission) recommends that users of such systems operate there CCTV in a responsible way, respecting privacy of others.
2. Be mindful when setting up a CCTV system, to check if it infringes on a neighbour's property/area and communicate with them in regards to its installation.
3. Inform your neighbours of adjacent business areas that you plan to install a CCTV/Camera system.
4. Put up a 'CCTV Monitoring Notice' within the scope of the camera's range, informing people that monitoring/video recording is taking place *
5. If you are recording any CCTV/Camera footage, make sure any information is not used for any purpose, other than that to protecting your property
6. If your CCTV/Camera captures information of any incident, this must be made available to Police or Law Enforcement, if it is deemed important

* Typical example of CCTV warning signage – *available from many sources*



The above is a guideline for installation of CCTV/Camera systems, please check with your regional authority for further and/or up to date laws on CCTV systems

For the United Kingdom, further information on the laws of CCTV and surveillance systems can be found at:-

<https://www.gov.uk/government/publications/domestic-cctv-using-cctv-systems>

WARNING: MAKE EVERY ATTEMPT TO MAKE A NOTE OF YOUR LOGIN/USERNAME AND PASSWORD. REACTIVATION OF THE UNIT COULD TAKE UP TO 14 DAYS.

Please Note: Do not attempt to open any component supplied with the kit, they are not user-serviceable parts. Due to high voltages, there may be danger of electrocution.

**FOR FURTHER SUPPORT PLEASE CONTACT
0203 771 4738**

Thank You