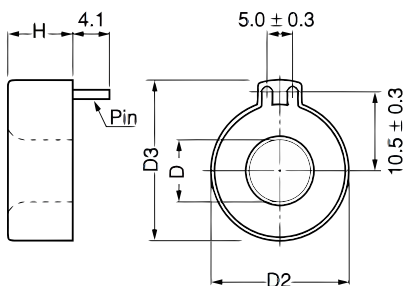


KEMET, ZCT



General Information	
Series:	ZCT
Type:	Current Sensors
Style:	Radial Pin
Description:	Zero-Phase Current Transformers
Features:	High Sensitivity, Compact
Lead:	2 Pin
RoHS:	Yes
Notes:	0.8 mm Pin connectors

Dimensions	
D	7.4mm MIN
H	8.5mm MAX
D2	19.3mm MAX
D3	21.8mm MAX
D4	8mm NOM

Specifications	
Voltage DC:	8 mV MIN (Output)
Miscellaneous:	Measurement Conditions: f=60Hz, R=300 Ohms, I _o =22.5 mAmps. Overinput characteristics (After DC5A input) = 10% MAX

Packaging Specifications	
Packaging:	Bulk, Box
Packaging Quantity:	1050