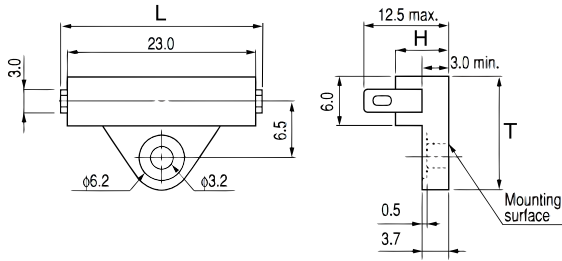


KEMET, OHD



General Information	
<b>Series:</b>	OHD
<b>Type:</b>	Thermal Sensors
<b>Style:</b>	Radial Tab
<b>Description:</b>	Thermal Guard
<b>Features:</b>	Overheating Monitoring, Simple Circuit Design, Reliabile ON-OFF Operation, Compact, High Speed Response
<b>Lead:</b>	Tab Leads
<b>RoHS:</b>	Yes

Dimensions	
<b>L</b>	27mm MAX
<b>H</b>	6mm
<b>T</b>	13.5mm

Packaging Specifications	
<b>Packaging:</b>	Bulk, Tray
<b>Packaging Quantity:</b>	1000

Specifications	
<b>Rated Temperature:</b>	100C
<b>Rated Temperature Tolerance:</b>	+/-5C
<b>Temperature Range:</b>	+30/+130C
<b>Voltage DC:</b>	110 VDC MAX (Opening/Closing), 2500 VAC/1min Or 3000 VAC/1sec (Insulation Withstand Voltage, Between Terminals And Mounting Resin Surface)
<b>Voltage AC:</b>	110 VAC MAX (Opening/Closing)
<b>Current:</b>	0.3 Amps AC/DC MAX (Opening/Closing), 0.1 mAmps MIN (1VDC, Opening/Closing)
<b>Resistance:</b>	150 mOhms MAX (Contact Resistance)
<b>Miscellaneous:</b>	Differential Temperature = 10C MAX. Contact Shape B = Break. Power = 6W AC/DC MAX (Opening/Closing)