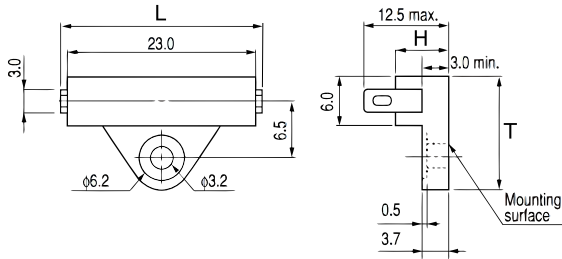


KEMET, OHD



| General Information |   |
|---------------------|---|
| <b>Series:</b>      | OHD   |
| <b>Type:</b>        | Thermal Sensors   |
| <b>Style:</b>       | Radial Tab  |
| <b>Description:</b> | Thermal Guard   |
| <b>Features:</b>    | Overheating Monitoring, Simple Circuit Design, Reliabile ON-OFF Operation, Compact, High Speed Response |
| <b>Lead:</b>        | Tab Leads   |
| <b>RoHS:</b>        | Yes   |

| Dimensions |          |
|------------|----------|
| <b>L</b>   | 27mm MAX |
| <b>H</b>   | 6mm      |
| <b>T</b>   | 13.5mm   |

| Packaging Specifications   |            |
|----------------------------|------------|
| <b>Packaging:</b>          | Bulk, Tray |
| <b>Packaging Quantity:</b> | 1000       |

| Specifications                      |  |
|-------------------------------------|--|
| <b>Rated Temperature:</b>           | 90C  |
| <b>Rated Temperature Tolerance:</b> | +/-5C  |
| <b>Temperature Range:</b>           | +30/+130C  |
| <b>Voltage DC:</b>                  | 110 VDC MAX (Opening/Closing), 2500 VAC/1min Or 3000 VAC/1sec (Insulation Withstand Voltage, Between Terminals And Mounting Resin Surface) |
| <b>Voltage AC:</b>                  | 110 VAC MAX (Opening/Closing)  |
| <b>Current:</b>                     | 0.3 Amps AC/DC MAX (Opening/Closing), 0.1 mAmps MIN (1VDC, Opening/Closing)  |
| <b>Resistance:</b>                  | 150 mOhms MAX (Contact Resistance)   |
| <b>Miscellaneous:</b>               | Differential Temperature = 10C MAX. Contact Shape M = Make. Power = 6W AC/DC MAX (Opening/Closing)   |