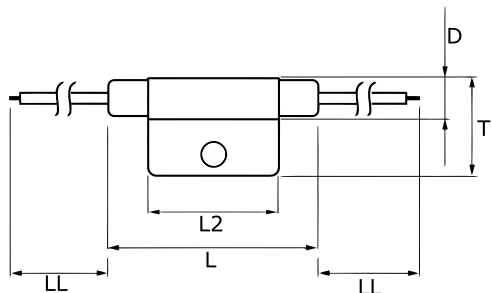


KEMET, TRS



General Information	
Series:	TRS
Type:	Thermal Sensors
Style:	Axial
Description:	Thermal Reed Switch
Features:	BLR Series
Lead:	Cables
RoHS:	Yes
Approvals:	UL, CSA, VDE

Dimensions	
D	8.2mm MAX
L	50mm MAX
L2	29mm MAX
T	20mm MAX
LL	200mm

Specifications	
Rated Temperature:	80C
Rated Temperature Tolerance:	+/-2.5C
Temperature Range:	0/+130C
Voltage AC:	264 VAC MAX (Opening/Closing)
Current:	0.275 Amps MAX (Make/Break)
Miscellaneous:	Differential Temperature = 10C MAX. Power = 60.5W AC MAX (Opening/Closing)

Packaging Specifications	
Packaging:	Bulk, Rubber Band
Packaging Quantity:	600

Statements of suitability for certain applications are based on our knowledge of typical operating conditions for such applications, but are not intended to constitute - and we specifically disclaim - any warranty concerning suitability for a specific customer application or use. This Information is intended for use only by customers who have the requisite experience and capability to determine the correct products for their application. Any technical advice inferred from this Information or otherwise provided by us with reference to the use of our products is given gratis, and we assume no obligation or liability for the advice given or results obtained.