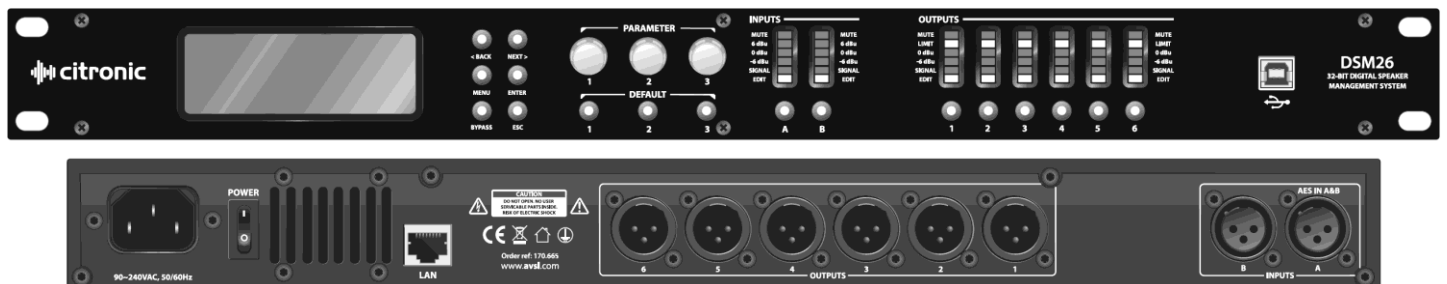


# DSM26

## DIGITAL SPEAKER MANAGEMENT SYSTEM

Order ref: 170.665UK

User Manual



## Features

- 2 inputs, 6 outputs, fully balanced
- Independent parametric EQs
- Delay and Compressor/Limiter/Gate functions
- All inputs/outputs independently controlled
- Controllable via front panel, USB or LAN
- PC editing software included



Caution: Please read this manual carefully before operating  
Damage caused by misuse is not covered by the warranty

## Introduction

Thank you for choosing the DSM26 Digital Speaker Management System.

This unit has been designed to offer professional quality performance with open flexibility to address a wide range of sound reinforcement applications. Please read this manual and keep fit or reference to gain the best results from this equipment and avoid damage through misuse.

## Contents

Panel controls and connectors	Page 3
Panel operation	
- Input parameter setting	Page 4
- Output parameter setting	Page 5
- Main Menu setting	Page 6
PC editing software operation	
- Setting up	Page 7
- Connection	Page 8
- Program menu	Page 9
- Channel function	Page 10
- LAN setup	Page 11
- Specification	Page 12

## Safety Instructions

1. Read these instructions.
2. Keep these instructions.
3. Heed all warnings.
4. Follow all instructions.
5. Do not use this item near water.
6. Clean only with dry cloth.
7. Do not block any of the ventilation openings.
8. Do not install near any heat sources such as radiators, heat registers, stoves or other items (including amplifiers) that produce heat.
9. Do not defeat the safety purpose of the polarised plug. The wide blade is provided for your safety.  
If the provided plug does not fit into the item or the mains socket, consult an electrician for replacement.
10. Protect the power cord from being walked on or pinched particularly at plug, convenience receptacles, and point where they exit from the item. Only use attachments/accessories specified by the manufacturer.
11. Use only with a cart, stand, tripod, bracket or table specified by the manufacturer, or sold with the item.  
When a cart is used, use caution when moving the cart/item combination to avoid injury.
12. Unplug this item during lightning storms or when unused for long periods of time.
13. Refer all servicing to qualified service personnel. Servicing is required when the item has been damaged in any way, such as power supply cord or plug is damaged, liquid has been spilled or objects have fallen into the item, the item has been exposed to rain or moisture, does not operate normally, or has been dropped (Note: accidental or cosmetic damage is not covered by the items 12 month warranty)
14. Please keep the unit in a safe environment.
15. Do not store anything on top of the item.



**CAUTION**  
**RISK OF**  
**ELECTRIC SHOCK**



To reduce the risk of electric shock, do not remove any cover.  
No user-serviceable parts inside. Refer servicing to qualified personnel only.

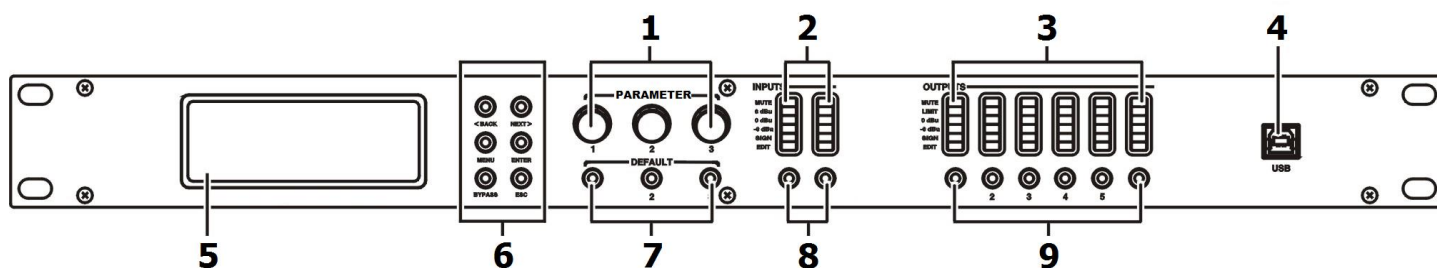


The lightning flash with arrowhead symbol within the equilateral triangle is intended to alert the user to the presence of un-insulated "dangerous voltage" within the product's enclosure that may be of sufficient magnitude to constitute a risk of electric shock.



The exclamation mark within the equilateral triangle is intended to alert the user to the presence of important operation and maintenance (servicing) instructions in the literature accompanying this appliance.

## Front Panel Controls and Connectors



1. Rotary Encoders – 3 parameter adjust and menu navigation controls

2. Input channel LEDs

	MUTE
	LIMIT
	0dBu
	-6dBu
	SIGNAL
	EDIT

3. Output channel LEDs

4. USB connection - Type B connector for linking to PC

5. LCD Display - Displays parameters and programming menu

6. Menu navigation buttons:

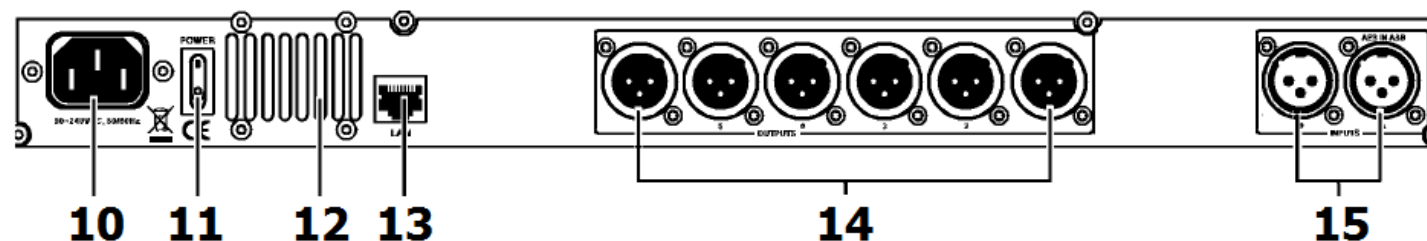
BACK	– selects previous menu item
NEXT	– selects next menu item
MENU	– Enter menu
ENTER	– Confirms selection
BYPASS	– bypasses process for comparison with unaffected signal
ESCAPE	– escapes from current screen

7. Default buttons

8. Input EDIT/MUTE key - Press to mute, press & hold 3sec to edit

9. Output EDIT/MUTE key - Press to mute, press & hold 3sec to edit

## Rear Panel Controls and Connectors



10. IEC connector - Mains inlet

11. Power switch - Switches mains power to the DSM26

12. Ventilation grille - Do not cover or obstruct airflow to this vent

13. RJ45 connector - LAN Connection to PC or other DSM2-6

14. Output connectors - Balanced XLR output connectors

15. Input connectors - Balanced XLR input connectors (analogue or AES digital on input A)

## Panel Operation

### Input Parameter Setting

Pressing a Mute/Edit button will Mute or un-mute that specific input.

Press & hold the MUTE/EDIT key for IN A or IN B for 3 seconds to enter edit mode.

Using the BACK and NEXT navigation buttons will step through the various menu options.

#### 1. Input Name

Parameter 1 rotary control selects the letter or figure

Parameter 2 rotary control moves to the next or previous character

Press ENTER to confirm when the name is set as required

Input A:LEFT  
Name:   
Press ENTER to save

#### 2. Input Delay

Delay 0-1000ms / 0-346m / 0-1134.88ft (independent per channel)

Parameter 1 rotary control performs fine adjustment

Parameter 2 rotary control performs coarse adjustment

Input A:LEFT  
Delay: 0.0625ms  
0.0216Metre  
0.0709Feet

#### 3. Input Polarity

Polarity [+] Normal / [-] Inverted (independent for each channel)

Parameter 1 rotary control toggles between + and - polarity

Input A:LEFT  
Polarity: +Normal

#### 4. Input Gain

Gain -40 to +6dB in 0.1dB steps (independent for each channel)

Parameter 1 rotary adjusts the Gain value

Input A:LEFT  
Gain: 0.0dB

#### 5. Input EQ

Input EQ1 - EQ8 (8 independent EQs for each channel)

Press BACK or NEXT buttons to step through EQ1 to EQ8

Parameter 1 rotary selects the filter type:

Parametric (PEQ), High-Shelf (Hi-S) or Low-Shelf (Lo-S)

Press ENTER to confirm the filter type and move down to parameter settings.

Parameter 1 rotary control adjusts the cutoff frequency (20Hz to 20kHz)

Parameter 2 rotary control adjusts the gain (-30 to +15dB)

Parameter 3 rotary control selects bandwidth/slope (0.05-3.00oct or 6-12dB/oct)

Press ENTER to confirm parameter settings

Input A:LEFT EQ1: Hi-S  
Freq: 45Hz  
Gain: 0.0dB  
Slope: 6dB

#### 6. Noise Gate

Noise gate threshold -120 to +10dBu

Parameter 1, 2 or 3 rotary controls adjust the gate threshold

Input A:LEFT  
Noise Gate: -98dBu

## Output Parameter setting

Pressing a Mute/Edit button will Mute or un-mute that specific input.

Press & hold the MUTE/EDIT key for IN A or IN B for 3 seconds to enter edit mode.

Using the BACK and NEXT navigation buttons will step through the various menu options.

### 1. Output Name

Parameter 1 rotary control selects the letter or figure

Parameter 2 rotary control moves to the next or previous character

Press ENTER to confirm when the name is set as required

```
Output 1:LSUB
Name:
Press ENTER to save
```

### 2. Signal Source

Select On or Off for signal input A and input B

Parameter 1, 2 or 3 rotary control selects on or off status

Press ENTER to toggle between input A and input B

```
Output 1:LSUB
Source:
InA InB
On Off
```

### 3. Output Gain

Gain range -40 to +15dBu

Parameter 1 rotary control adjusts output gain

```
Output 1:LSUB
Gain: 0.0dB
```

### 4. Output Polarity

Polarity [+] Normal / [-] Inverted (independent for each channel)

Parameter 1 rotary control toggles between + and - polarity

```
Output 1:LSUB
Polarity: +Normal
```

### 5. Output Delay

Delay 0-1000ms / 0-346m / 0-1134.88ft (independent per channel)

Parameter 1 rotary control performs fine adjustment

Parameter 2 rotary control performs coarse adjustment

```
Output 1:LSUB
Delay: 0.0625ms
0.0216Metre
0.0709Feet
```

### 6. Crossover HPF

Crossover High-pass filter settings (independent per channel)

Parameter 1 rotary control adjusts cutoff frequency (20Hz-20kHz)

Parameter 2 rotary control sets filter type (Linkwitz-Riley, Bessel, Butterworth)

Parameter 3 rotary control sets the slope gradient (12/18/24/48dB per octave)

```
Output 1:LSUB HPF
Freq: 20Hz
Filter: Bessel
Slope: 48dB/oct
```

### 7. Crossover LPF

Crossover Low-pass filter settings (independent per channel)

Parameter 1 rotary control adjusts cutoff frequency (20Hz-20kHz)

Parameter 2 rotary control sets filter type (Linkwitz-Riley, Bessel, Butterworth)

Parameter 3 rotary control sets the slope gradient (12/18/24/48dB per octave)

```
Output 1:LSUB HPF
Freq: 20Hz
Filter: Bessel
Slope: 48dB/oct
```

## 8. Output EQ

Output EQ1 - EQ6 (6 independent EQs for each channel)

Press BACK or NEXT buttons to step through EQ1 to EQ6

Parameter 1 rotary selects the filter type:

Parametric (PEQ), High-Shelf (Hi-S) or Low-Shelf (Lo-S)

Press ENTER to confirm the filter type and move down to parameter settings.

Parameter 1 rotary control adjusts the cutoff frequency (20Hz to 20kHz)

Parameter 2 rotary control adjusts the gain (-30 to +15dB)

Parameter 3 rotary control selects bandwidth/slope (0.05-3.00oct or 6-12dB/oct)

Press ENTER to confirm the parameter settings.

**Output 1:LSUB EQ1:PEQ**  
**Freq: 20Hz**  
**Filter: Bessel**  
**Slope: 48dB/oct**

## 9. Output compressor/limiter

Output Compressor or Limiter (independent for each channel)

Parameter 1 rotary control selects Compressor or Limiter. Press ENTER to confirm

In Compressor mode, press BACK or NEXT buttons to toggle between 2 pages:

Page 1: Parameter 1 adjusts the Threshold (-30 to +20dBu)

Page 1: Parameter 2 adjusts the Attack (0.3 to 100ms)

Page 1: Parameter 3 adjusts the Release time (2x, 4x, 6x, 8x, 16x, 32x Attack time)

Page 2: Parameter 1 selects Manual or Auto mode (Auto overrides Page 1 parameters)

Page 2: Parameter 2 adjusts the Clip Limiter (2dB to 12dB above threshold)

Page 2: Parameter 3 adjusts the Ratio (1:1, 1:2, 1:4, 1:8, 1:16, 1:32, 1:64, 1:Max)

**Output 1:LSUB**  
**Compressor: Manual**  
**Cliplim: 2.0dB Above**  
**Ratio: 1:16**

In Limiter mode, there is only one page of parameters.

Page 1: Parameter 1 adjusts the Threshold (-30 to +20dBu)

Page 1: Parameter 2 adjusts the Attack (0.3 to 100ms)

Page 1: Parameter 3 adjusts the Release time (2x, 4x, 6x, 8x, 16x, 32x Attack time)

**Output 1:LSUB**  
**Mode: Limit**  
**Threshold: -30.0dBu**  
**Att:40ms Rel: 4x**

## Main Menu

Pressing the MENU button enters the main menu for system settings.

The BACK and NEXT buttons or Parameter 1 to navigate through the sub-menus. Press ENTER to select an option.

1. X-over (crossover) 1) Load program, 2) Store program, 3) Erase program
2. Program copy Copy all input and output settings from a stored program to another program  
Parameter 1 selects source, Parameter 2 selects target, Press ENTER to copy
3. Channel copy Copy all parameter settings from any input or output channel to another channel  
Parameter 1 selects source, Parameter 2 selects target, Press ENTER to copy
4. Input Parameter 1 selects between Analogue or Digital (AES) input type
5. Security Parameter 1 = character, Parameter 2 = previous/ next, Press ENTER = lock (or unlock)
6. System
  - 1) Backlight Keep On or Auto-off after 25s
  - 2) System info. Press ENTER to see the system information
  - 3) Temperature: Parameter 1 adjusts the maximum temperature before cut-out
  - 4) Filter Display: Parameter 1 selects filter Bandwidth or Q parameter display
  - 5) Scene change: Enable/disable buttons 1, 2 and 3 as hot keys for 3 favourite programs
  - 6) Scene key setup: Use Parameter 1, 2 and 3 to set Favourites 1, 2 and 3
  - 7) WIFI Factory Reset – not used (future development)

## PC Software Operation

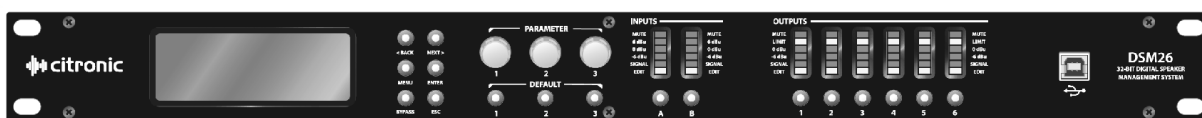
### Setting up

The Citronic DSM26 can be operated individually from a PC via USB and can also be linked in multiples over a wider, long-distance network via LAN connection. A maximum of 250 units may be linked together by this method. If connecting via LAN, see the "LAN Setup" section further on in this document.

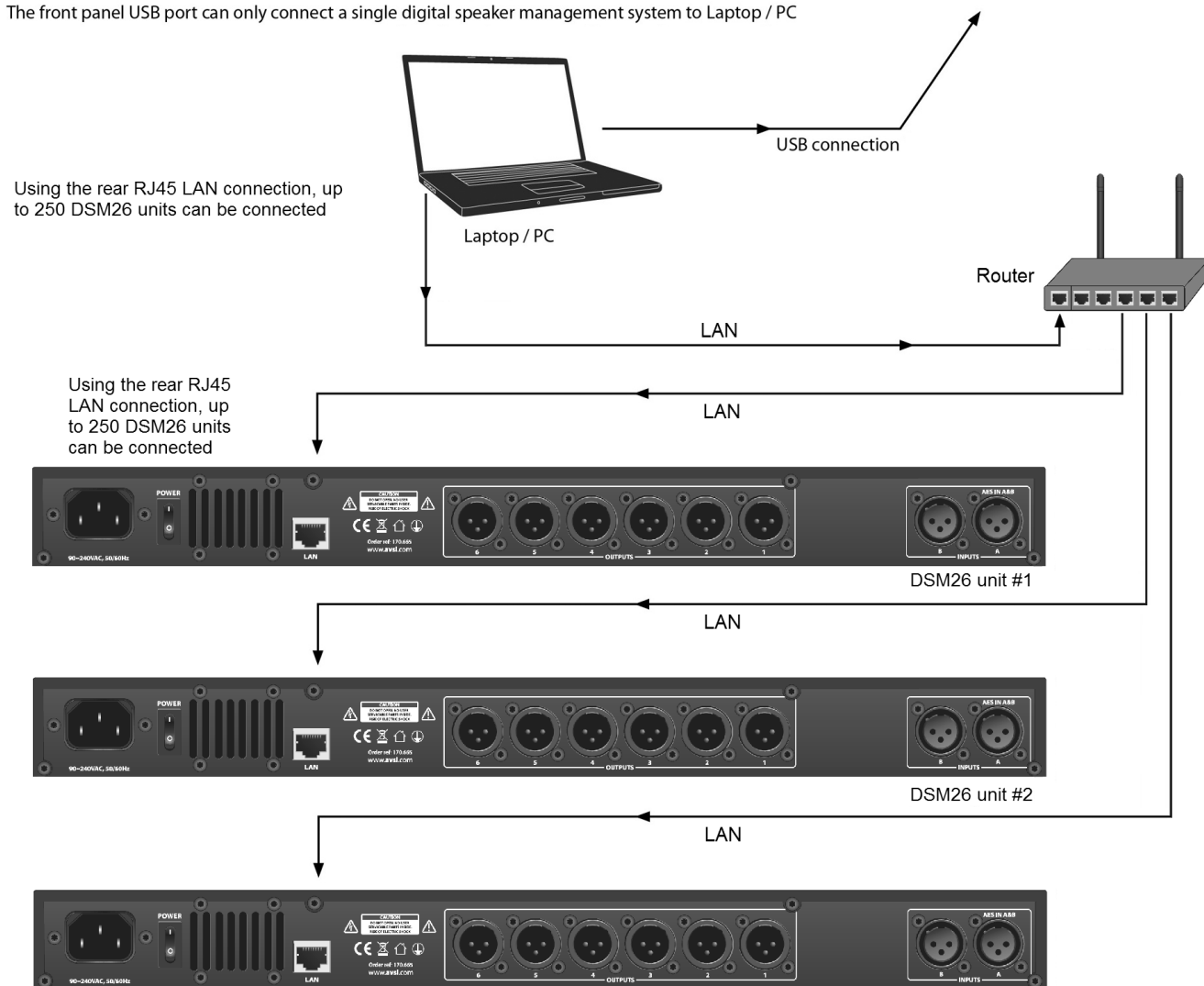
Before connecting a DSM26 via USB, install the software from the supplied disc. (also available to download from [www.avsl.com](http://www.avsl.com))

Locate the driver file "PL2303\_Driver" and double click to install (this will usually require a re-start once installed)

Connect the DSM26 via USB or LAN as shown below and double click the file named "DSP Ver 3.9"



The front panel USB port can only connect a single digital speaker management system to Laptop / PC

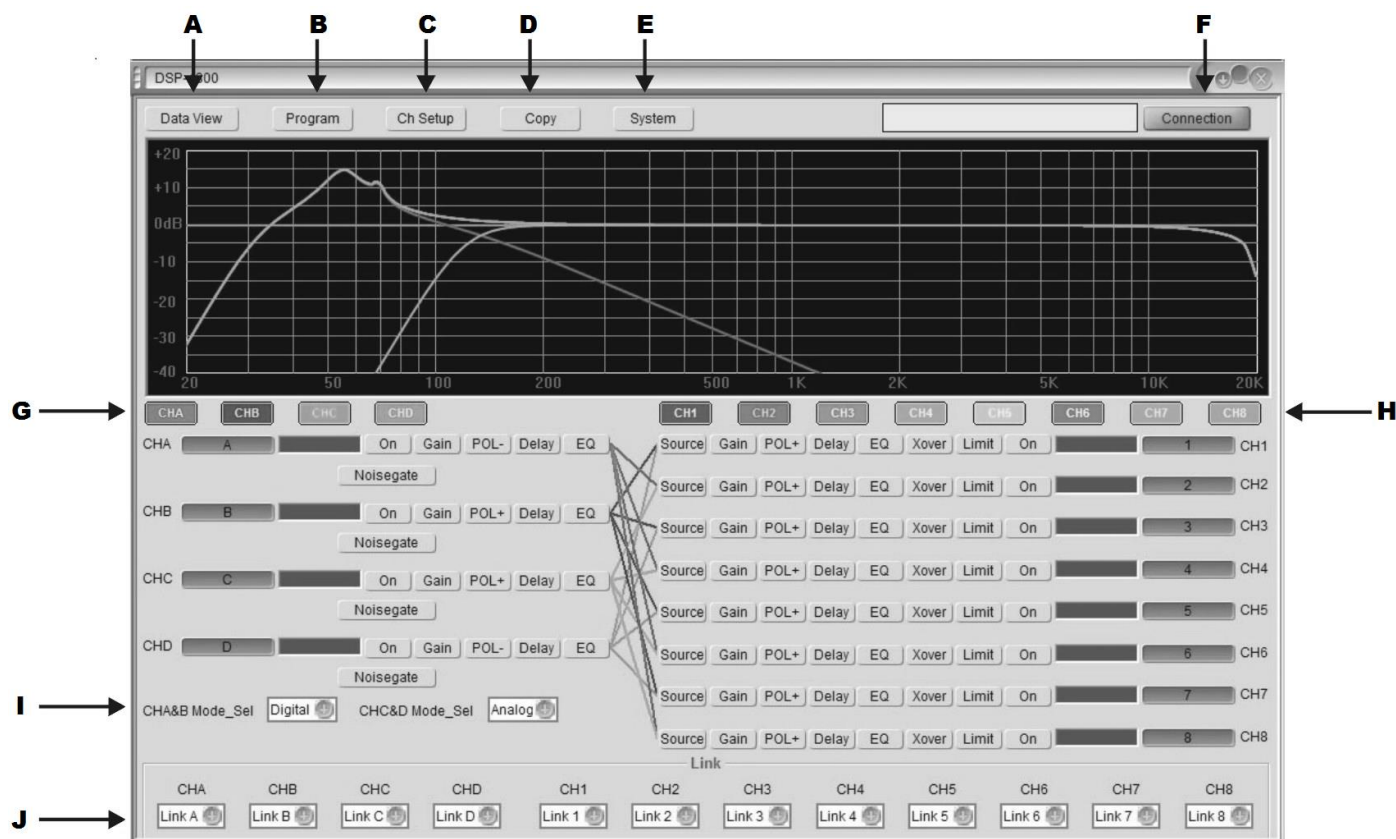


Using the rear RJ45 LAN connection, up to 250 DSM26 units can be connected

Using the rear RJ45 LAN connection, up to 250 DSM26 units can be connected

Each DSM26 connected to the network should be set up with a different IP address (via USB) first

## Screen Shot



Note: 4 input, 8 output software version shown – will default to 2 in, 6 out when DSM26 is connected

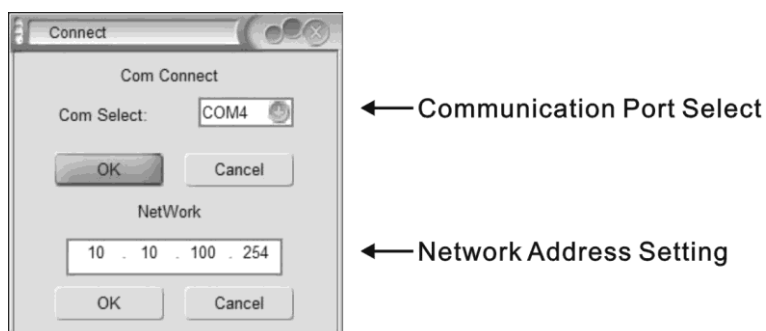
- |   |                          |   |                           |
|---|--------------------------|---|---------------------------|
| A | Display data/curve graph | F | Connection menu           |
| B | Save / Load Program menu | G | Input edit select         |
| C | Channel setup            | H | Output edit select        |
| D | Copy channel             | I | Input source type setting |
| E | System menu              | J | Channel connect           |

## Connection

In order for the PC to communicate with the DSM26, it is necessary to establish a connection. Click on "Connection" (F)



The following menu will be displayed





The software will normally be able to detect the correct COM port and this will be displayed.

Click OK to confirm the USB connection between PC and DSM26. If unsuccessful, try a different COM port from the list. If COM port is not detected automatically, open the PC's Hardware Device Manager.

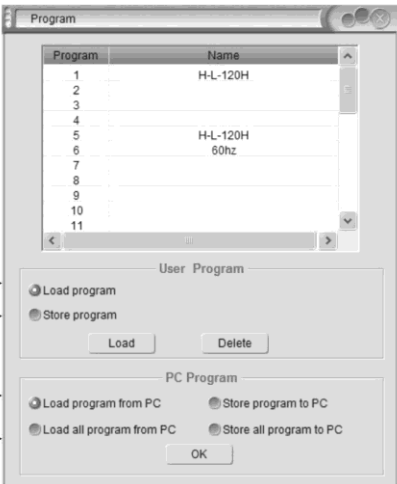
(e.g. "Start-Settings-Control Panel-System-Hardware-Device Manager" or type "Device Manager" into the search box) Look in "Ports" to identify which port is being used for the DSM26.

Select the correct port for the connected DSM26 in the Connection menu (COM4 is shown in the above example)

If connecting via LAN, enter a workable IP address which is not occupied by other equipment into the "Network" field.

## Program menu

Clicking on the **Program** button at the top of the main screen will open the following window.



- A Load/Delete group user data or effect data from device
- B Save/Delete group user data or effect data from device
- C Load group user data or effect data from PC
- D Load all group user data or effect data from PC
- E Save group user data or effect data from PC
- F Save all group user data or effect data from PC

To load a program, check button A, click on the program in the list in the top half of the window and then click the Load button.

To delete a program, click on it in the list in the top half of the window and then click the Delete button.

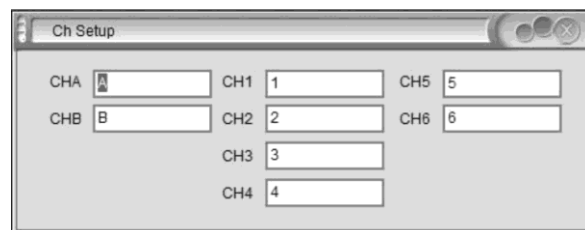
To save a program after editing, check button B, select a blank program or one for over-writing, type a name in the text field and click the Save button.

Selected programs or All programs may be saved to PC or loaded from PC by checking buttons C, D, E or F and clicking "OK"

## Channel setup

Clicking the **Ch Setup** button will open the window shown opposite.

Click in each window and type a name for each input and output, then hit return to rename that channel



## Copy function

Clicking the **Copy** button in the main screen will open the window shown opposite.

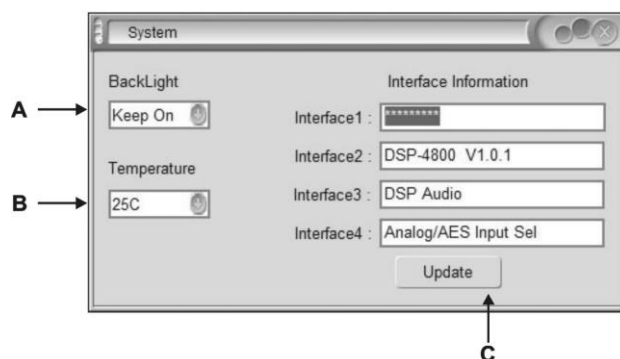
Select inputs (left side) or outputs (right side) to copy from and to and click **OK** to copy all settings across.



## System menu

Clicking the **System** button in the main screen will open the window shown opposite.

- A Select LCD backlight constant or off after 25s
- B Select cutoff temperature for the device
- C Interface information is shown in the 4 fields on the right side of the window and can be edited by typing directly in each and clicking **Update**

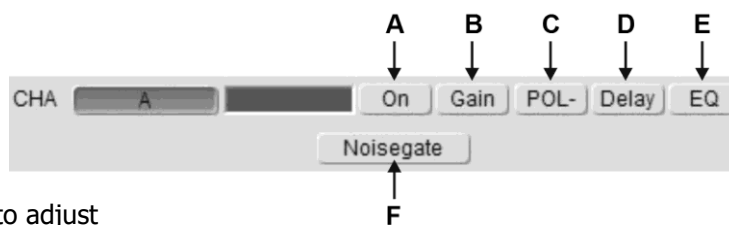


## Channel functions

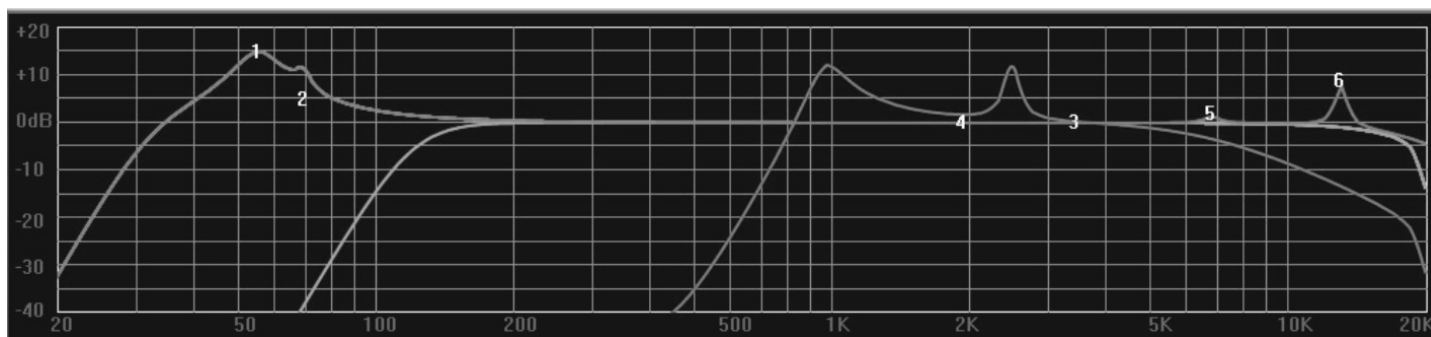
Clicking on an input channel button switches the button between its own colour or grey.

When it is grey, its frequency curve will not be displayed in the top window. Clicking on any of the channel functions button will open an editing window for that function

- A Channel Mute or On select
- B Input Gain setting
- C Normal or Inverted polarity select
- D Input Delay time setting
- E EQ edit - click & drag EQ 1-8 on the curve graph to adjust centre frequency or stretch bandwidth (see below)
- F Noise gate setting



In EQ edit mode, click and drag EQ numbers on the curve graph to adjust the centre frequency for each filter

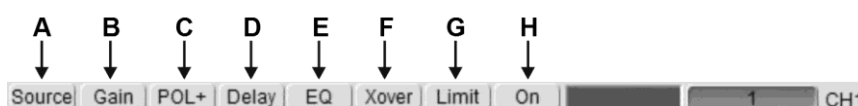


Clicking on an output channel button also switches the button between its own colour or grey.

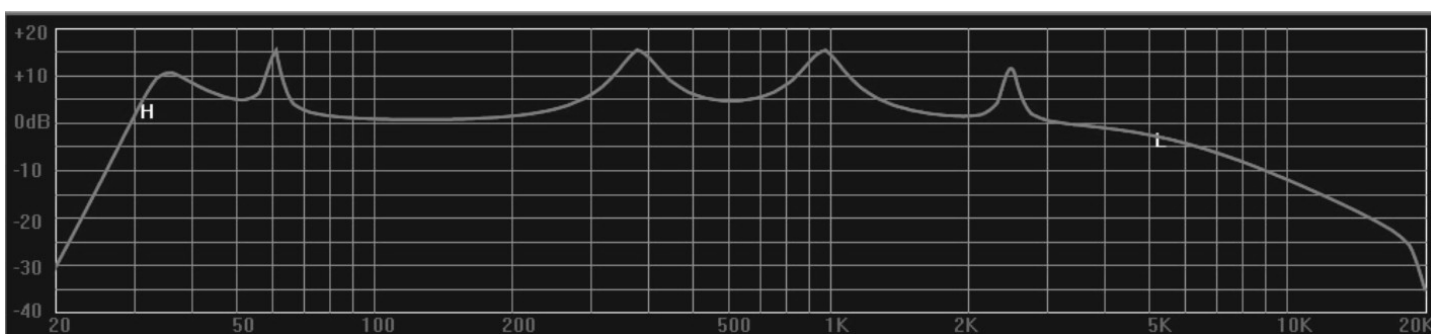
When it is grey, its frequency curve will not be displayed in the top window. Clicking on any of the channel functions button will open an editing window for that function.

Clicking on any function button will enter editing mode for that function.

- A Source select (from input A, B or both)
- B Output Gain setting
- C Normal or Inverted polarity select
- D Output Delay time setting
- E EQ edit - click & drag EQ 1-8 on the curve graph to adjust centre frequency or stretch bandwidth
- F Crossover edit - click and drag H or L on the curve graph to adjust centre frequency for each filter (see below)
- G Compressor/Limiter setting



In Crossover edit mode, click and drag H or L to adjust the centre frequency for each filter



## LAN setup

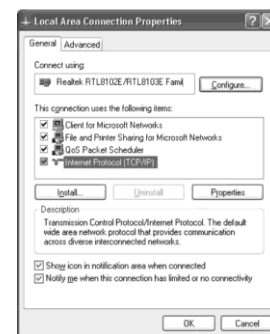
On the PC that is to be connected with the DSM26 (or multiple units), navigate to the network adaptor properties.

e.g. in Windows 10, click the start button and click the settings icon (cog symbol)

Select **Network & Internet** and **Ethernet**.

Select **Change Adapter Options**, right click the relevant connection and select **Properties**.

The window opposite should appear, showing network adaptor options.



Right click on **TCP/IP** and the window opposite will appear.

Ensure that the button for **Obtain an IP address automatically**

This will ensure that the PC will connect to the DSM26 unit as a LAN host.

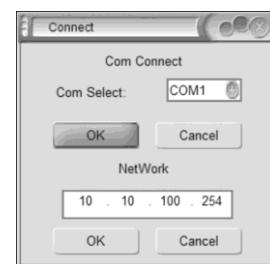


The next step is to connect the PC to the DSM26 unit directly via LAN cable.

In the DSM26 software main screen, click the **Connection** button.

The window opposite will open, showing the COM port and IP settings.

Click OK below the auto-detected IP address and the DSM26 will connect.



Once connected directly to the PC via LAN cable, it is possible to access the DSM26 network adaptor from the PC by opening a browser window (IE, MS Edge or Chrome etc.)

Type in the (auto-detected) IP address of the DSM26 into the address bar of the browser.

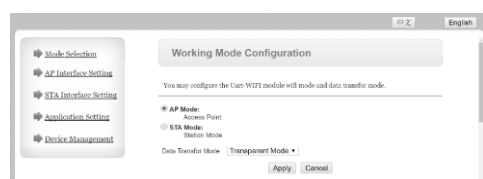
(e.g. as shown in the connection window opposite, this would be "http://10.10.100.254")

A security window will open as follows...



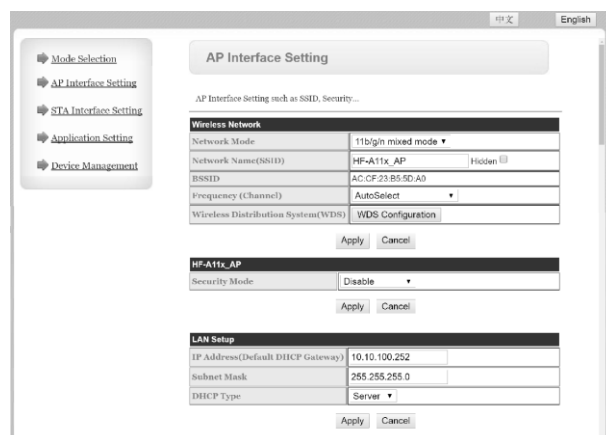
Both User name and Password are "admin" by default.

Once logged into the DSM26, an edit window will open, as shown below.



If the display is not in English, click the English button. There are many advanced settings within this menu, which should only be edited by the network administrator but the basic LAN settings are easily set as follows.

Click on the "AP Interface Setting" link and a new window will open to edit network settings.



In the AP Interface Setting window, it is possible to edit the IP address of the DSM26 for LAN connection. Enter a new valid IP address into the top field of the "LAN Setup" section (Wireless does not apply to the DSM26 unless modified)

Click "Apply" and a message will appear advising...  
"Set Successfully, Restart to use new setting"

Click on the "Device Management" link.

(the login user name and password can be edited here)

Click on the "Restart" button and the DSM26 will restart.

Note: to log back in, it will be necessary to input the new IP address into the browser address bar (and new user name and password if they have been edited)

The unit can now be connected to the main LAN network and connected by its IP address in the DSP Ver3.9 application.

## Specifications

Power supply	115/230Vac, 50/60Hz (IEC)
Power consumption	<25W
Fuse	T315mA
Crossover	HPF + LPF fully programmable per output
Filter type	Linkwitz-Riley; Bessel; Butterworth.
PC Com port	USB and LAN (RJ45)
CMRR	65dB (50Hz-10kHz)
Input type	Analogue or AES digital (XLR)
Input/output polarity	In phase (+) or reverse (-)
Input EQ	8-band parametric EQ
Input Noise Gate	-120dBu to +10dBu
Processor	96kHz, 32-bit floating point DSP
Mute	Any input or output channel
Limiter	6 x output (adjustable) Compressor/Limiter
Output EQ	8-band: Hi/Lo-shelf or Parametric
Delay	0-1000ms per output
Frequency response	20Hz-20kHz
Input impedance : balanced	>10k Ohms
Output impedance : balanced	<60 Ohms
Dimensions	482 x 44 x 220mm
Weight	3.19kg



**Disposal:** The "Crossed Wheelie Bin" symbol on the product means that the product is classed as Electrical or Electronic equipment and should not be disposed with other household or commercial waste at the end of its useful life. The goods must be disposed of according to your local council guidelines.

*Errors and omissions excepted.  
Copyright© 2017. AVSL Group Ltd.*