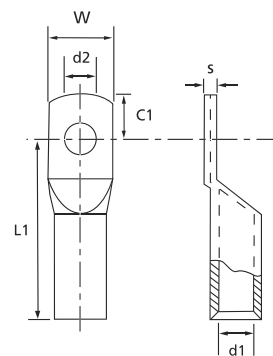


Non-insulated copper tube ring terminals DIN 46235

Non-insulated terminals

Technical Information

| | |
|-----------------|--|
| Material | Electrolytic copper |
| Plating | Tin plated |
| Metal barrel | Copper tube |
| Marking | Cable cross-section area and bolt size |
| Cable insertion | Easy entry |



| Product Ref. | Wire size [mm ²] | Stud size | Dimensions | | Weight [kg/100] | Quantity [pieces] | Crimping tool* | | | | |
|--------------|------------------------------|-----------|------------|---------|-----------------|-------------------|----------------|--------|--------|-----|---------------------------|
| | | | L1 [mm] | C1 [mm] | | | | W [mm] | s [mm] | | |
| T 2.5-4** | 2.5 | M 4 | 13.0 | 4.0 | 7.5 | 1.2 | 2.3 | 4.3 | 0.14 | 100 | ERG2002E |
| T 4-6** | 4.0 | M 6 | 19.0 | 6.5 | 10.0 | 1.2 | 3.0 | 6.5 | 0.21 | 100 | |
| T 6-5 | 6.0 | M 5 | 24.0 | 6.5 | 8.5 | 1.5 | 3.8 | 5.3 | 0.34 | 100 | |
| T 6-6 | 6.0 | M 6 | 24.0 | 7.5 | 8.5 | 1.5 | 3.8 | 6.4 | 0.35 | 100 | |
| T 10-6 | 10.0 | M 6 | 27.0 | 7.5 | 9.0 | 1.5 | 4.5 | 6.4 | 0.40 | 100 | |
| T 10-8 | 10.0 | M 8 | 27.0 | 10.0 | 13.0 | 1.3 | 4.5 | 8.4 | 0.41 | 100 | |
| T 16-6 | 16.0 | M 6 | 36.0 | 7.5 | 13.0 | 2.5 | 5.5 | 6.4 | 1.50 | 100 | |
| T 16-8 | 16.0 | M 8 | 36.0 | 10.0 | 13.0 | 2.5 | 5.5 | 8.4 | 1.50 | 100 | |
| T 16-10 | 16.0 | M 10 | 36.0 | 12.0 | 17.0 | 2.5 | 5.5 | 10.5 | 1.50 | 100 | |
| T 25-6 | 25.0 | M 6 | 38.0 | 7.5 | 14.0 | 3.0 | 7.0 | 6.4 | 2.20 | 100 | |
| T 25-8 | 25.0 | M 8 | 38.0 | 10.0 | 16.0 | 3.0 | 7.0 | 8.4 | 2.20 | 100 | |
| T 25-10 | 25.0 | M 10 | 38.0 | 12.0 | 17.0 | 3.0 | 7.0 | 10.5 | 2.20 | 100 | WT3165B WTH500 (+Dies) |
| T 25-12 | 25.0 | M 12 | 38.0 | 13.0 | 19.0 | 3.0 | 7.0 | 13.5 | 2.20 | 100 | |
| T 35-8 | 35.0 | M 8 | 42.0 | 10.0 | 17.0 | 3.5 | 8.2 | 8.4 | 3.50 | 100 | |
| T 35-10 | 35.0 | M 10 | 42.0 | 12.0 | 19.0 | 3.5 | 8.2 | 10.5 | 3.50 | 100 | |
| T 50-8 | 50.0 | M 8 | 52.0 | 10.0 | 20.0 | 4.0 | 10.0 | 10.5 | 4.40 | 100 | |
| T 50-10 | 50.0 | M 10 | 52.0 | 12.0 | 19.0 | 3.5 | 10.0 | 10.5 | 4.40 | 100 | |
| T 70-10 | 70.0 | M 10 | 55.0 | 12.0 | 24.0 | 4.5 | 11.5 | 10.5 | 6.20 | 50 | WT3014E (+Dies) |
| T 95-10 | 95.0 | M 10 | 65.0 | 12.0 | 28.0 | 5.0 | 13.5 | 10.5 | 8.70 | 25 | |
| T 120-10 | 120.0 | M 10 | 70.0 | 15.0 | 32.0 | 5.5 | 15.5 | 10.5 | 10.00 | 25 | |
| T 150-12 | 150.0 | M 12 | 78.0 | 15.0 | 34.0 | 6.0 | 17.0 | 10.5 | 12.00 | 100 | |

* Use selection chart to determine appropriate die set (see page 376)

** Not according to DIN Ring form with inspection hole

See pages 370 to 376 for tooling specifications