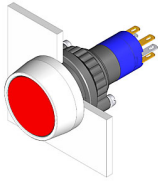


EAO – Your Expert Partner for Human Machine Interfaces

14-271.022 - Illuminated pushbutton actuator

14-271.022 - Illuminated pushbutton actuator



Attention: The preview is based on a sample product. This can differ from your current configuration.

Mounting

Mounting cut-out
Design Ø 22,3 mm
raised

Front

Front dimension
Front shape Ø 29 mm
round

Other Attributes

Weight 0,013 kg

Operating-/Indication part

Lens illumination illuminative

IP-Rating

Front protection IP67

Connection Method

Terminal Solder 2.8 x 0.5 mm

Actuator

Switching action Maintain
Housing colour black
Housing material Plastic

Switching element

Switching system Snap-action switching element
Switching current 5 A
Contacts 1 NC + 1 NO
Contact material
Switching voltage 250 V AC

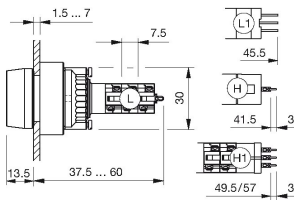
Function

Illuminated pushbutton

EAO – Your Expert Partner for Human Machine Interfaces

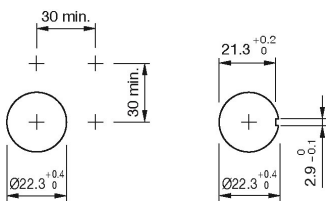
14-271.022 - Illuminated pushbutton actuator

Dimensions

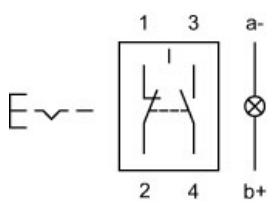


L1 = Solder/Plug-in terminal 2.8 x 0.5 mm

Mounting cut-outs



Wiring diagram



Legend

Contacts: NC = Normally closed, NO = Normally open
Switching action: C = Maintained