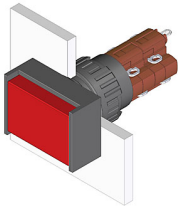


EAO – Your Expert Partner for Human Machine Interfaces

51-122.0252 - Illuminated pushbutton actuator

51-122.0252 - Illuminated pushbutton actuator



Attention: The preview is based on a sample product. This can differ from your current configuration.

Mounting

Mounting cut-out Design	Ø 16 mm raised
-------------------------	-------------------

Front

Front dimension	18 mm x 24 mm
Front shape	rectangular
Front bezel colour	black
Front bezel material	Plastic

Other Attributes

Weight	0,008 kg
--------	----------

Operating-/Indication part

Lens illumination	illuminative
-------------------	--------------

IP-Rating

Front protection	IP65
------------------	------

Connection Method

Terminal	Solder
----------	--------

Actuator

Switching action	Momentary
Housing colour	black
Housing material	Plastic

Switching element

Switching system	Snap-action switching element
Contacts	2 NC + 2 NO
Switching current	5 A
Contact material	
Switching voltage	250 V AC

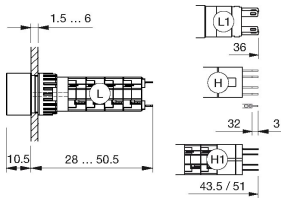
Function

Illuminated pushbutton

EAO – Your Expert Partner for Human Machine Interfaces

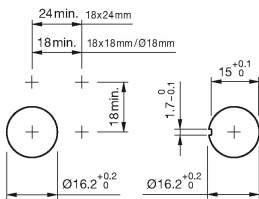
51-122.0252 - Illuminated pushbutton actuator

Dimensions

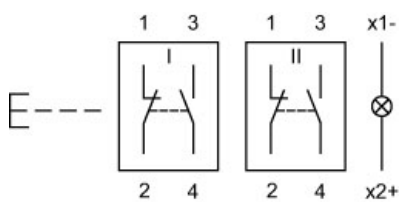


H = Universal terminal 2.0 x 0.5 mm

Mounting cut-outs



Wiring diagram



Legend

Contacts: NC = Normally closed, NO = Normally open
Switching action: B = Momentary