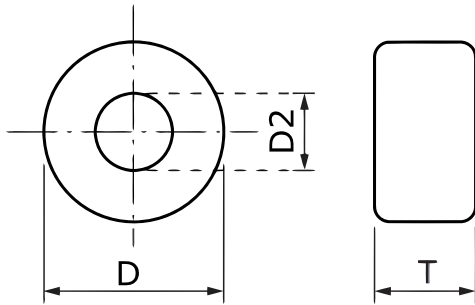


**KEMET Part Number: ESD-R-12C-2**  
(UECESDR12C2000)

KEMET, ESD-R, EMI Cores, Commercial Grade



Dimensions	
D	12mm MAX
D2	7.3mm MAX
T	15.3mm MAX

General Information	
Brand:	TOKIN
Series:	ESD-R
Style:	Round
Cable Type:	Round Cable
Description:	EMI Core Solid, For Round Cables, Toroidal Cores, Coated Type
RoHS:	Yes
Case Color:	Blue
Materials:	Mn-Zn & Ni-Zn

Specifications	
Effective Frequency:	300 MHz (FM Band Range)