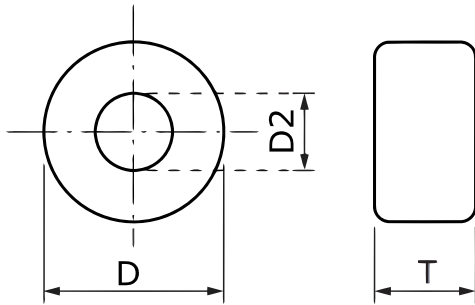


KEMET Part Number: ESD-R-15C
(UECESDR15C0000)

KEMET, ESD-R, EMI Cores, Commercial Grade



| Dimensions | |
|------------|------------|
| D | 15.2mm MAX |
| D2 | 10.5mm MAX |
| T | 12.5mm MAX |

| General Information | |
|---------------------|---------------------------------------------------------------|
| Brand: | TOKIN |
| Series: | ESD-R |
| Style: | Round |
| Cable Type: | Round Cable |
| Description: | EMI Core Solid, For Round Cables, Toroidal Cores, Coated Type |
| RoHS: | Yes |
| Case Color: | Blue |
| Toroidal: | ESD-R-15C-1 |
| Materials: | Mn-Zn & Ni-Zn |

| Specifications | |
|----------------------|-------------------------|
| Effective Frequency: | 300 MHz (FM Band Range) |