

Features

- A wide variety of actuator for selection
- Electric shock protection class
- A large switching capacity of 15A with high repeat accuracy
- A wide range of operating speed is available

Characteristics

	Degree of protection	IP00
Rating	IEC 60947-5-1	250V AC / 15A
	UL508	480V AC / 15A
		0.5A / 125V DC, 0.25A / 250V DC
		1/8HP/120V AC, 1/4HP/240V AC, 1/2HP / 480V AC
Durability	Mechanical	20,000,000 operations min.
	Electrical	500,000 operations min.
	Operating Speed	0.01mm ~ 1m/s
Operating Frequency	Mechanical	240 operations /min.
	Electrical	20 operations /min.
	Rated Frequency	50/60Hz
	Insulation Resistance	100MΩ min. (at 500V DC)
	Contact Resistance	15mΩ max. (initial value)
Dielectric Strength	Between terminals of same polarity	AC1,000V 50/60Hz 1min
	Between current-carrying metal parts and ground	AC2,000V 50/60Hz 1min
	Between each terminal and non-current-carrying metal part	AC2,000V 50/60Hz 1min
	Rated insulation voltage (Ui)	250V AC
	Pollution degree (Application environment)	3 (EN60947-5-1)
	Rated open thermal current (Ith)	15A
	Degree of protection against electric shock	Class I
Vibration Resistance	Malfunction	10~55Hz double amplitude
Shock Resistance	Destruction	1,000m/s ² min.
	Malfunction	300m/s ² min.
	Ambient operating temperature range	-25°C ~ +80°C with no icing
	Ambient operating humidity range	35% ~ 85% RH

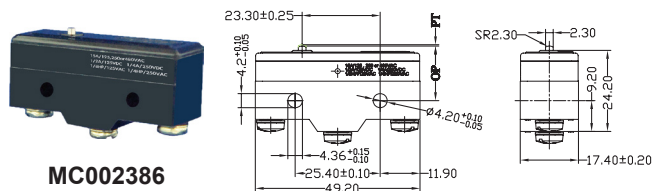
Notes:

1. Above values of these characteristics are initial values.
2. Above values of these characteristics may be depending on different models.
3. Above durability is for an ambient temperature of 5 to 35°C and ambient humidity of 40% to 70%.

Operating Characteristics

Part Number	Operating Force (Max.)	Release Force (Min.)	Pre Travel (Max.)	Over Travel (Min.)	Movement Differential (Max.)	Free Position (Min.)	Operating Position
MC002393	1.57N	0.41N	-	2.4mm	0.5mm	32.5mm	30.2 ±0.4mm
MC002386	2.45 ~ 3.43N	1.12N	0.4mm	0.13	0.05mm	-	15.9 ±0.4mm
MC002387	2.45 ~ 3.43N	1.12N	0.4mm	1.6mm	0.05mm	-	28.2 ±0.5mm
MC002388	2.45 ~ 3.43N	1.12N	0.4mm	1.6mm	0.05mm	-	21.5 ±0.5mm
MC002389	2.45 ~ 3.43N	1.12N	0.4mm	5.5mm	0.05mm	-	21.8 ±0.8mm
MC002390	2.45 ~ 3.43N	1.12N	0.4mm	3.58mm	0.05mm	-	33.4 ±1.2mm
MC002391	2.45 ~ 3.43N	1.12N	0.4mm	3.58mm	0.05mm	-	33.4 ±1.2mm
MC002392	2.35N	0.55N	-	4mm	0.64mm	35mm	30.2 ±0.4mm
MC002394	1.67N	0.41N	-	2.4mm	0.51mm	43.6	41.3 ±0.8mm
MC002395	1.67N	0.41N	-	2.4mm	0.51mm	33.3mm	31 ±0.4mm
MC002396	0.69N	0.14N	-	5.6mm	1.27mm	28.2mm	19 ±0.8mm
MC002397	1.57N	0.27N	-	2mm	1mm	24.8mm	19 ±0.8mm

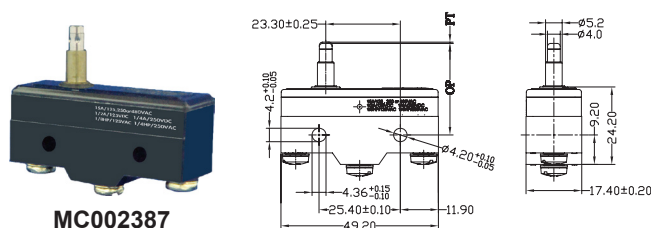
Standard Pin Plunger



MC002386

Weight: 28.6g

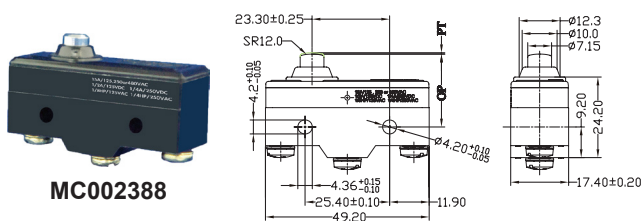
Slim Spring Plunger



MC002387

Weight: 30.6g

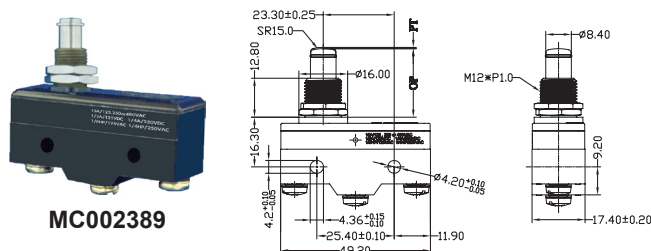
Short Spring Plunger



MC002388

Weight: 31.1g

Panel Mount Plunger



MC002389

Weight: 42.7g

Dimensions : Millimetres

Microload Switch

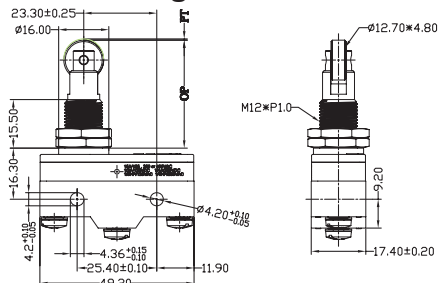


Panel Mount Roller Plunger



MC002390

Weight: 54g

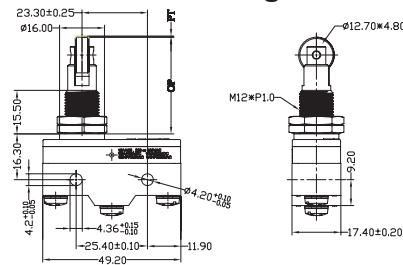


Panel Mount Cross Roller Plunger



MC002391

Weight: 54.1g

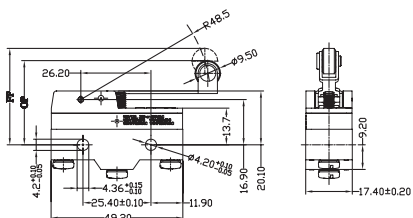


Horizontal Standard Roller Leaf Spring



MC002392

Weight: 35.2g

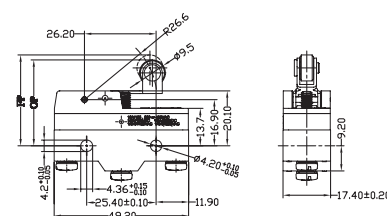


Roller Short Hinge Lever



MC002393

Weight: 34.3g

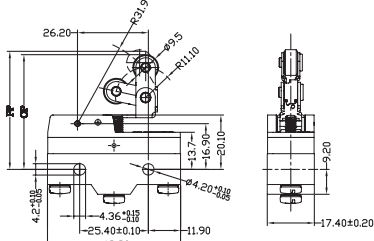


Unidirectional Short Hinge Roller Lever



MC002394

Weight: 36.9g

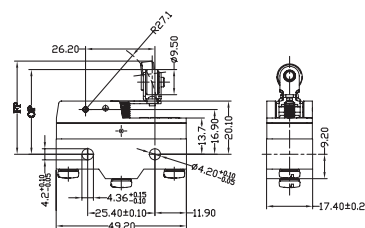


Hinge Cross Roller Lever



MC002395

Weight: 35.1g

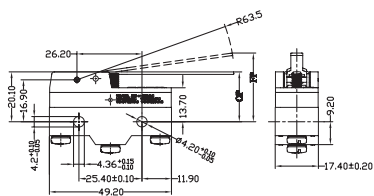


Standard Hinge Lever



MC002396

Weight: 33.2g

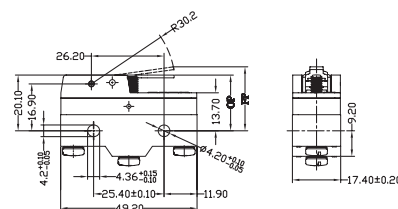


Short Hinge Lever



MC002397

Weight: 32.1g



Dimensions : Millimetres



Part Number Table

Description	Part Number
Horizontal Limit Switch, Microload (IP00), Standard Pin Plunger, Screw Terminal	MC002386
Horizontal Limit Switch, Microload (IP00), Slim Spring Plunger, Screw Terminal	MC002387
Horizontal Limit Switch, Microload (IP00), Short Spring Plunger, Screw Terminal	MC002388
Horizontal Limit Switch, Microload (IP00), Panel Mount Plunger, Screw Terminal	MC002389
Horizontal Limit Switch, Microload (IP00), Panel Mount Roller Plunger, Screw Terminal	MC002390
Horizontal Limit Switch, Microload (IP00), Panel Mount Cross Roller Plunger, Screw Terminal	MC002391
Horizontal Limit Switch, Microload (IP00), Horizontal Standard Roller Leaf Spring, Screw Terminal	MC002392
Horizontal Limit Switch, Microload (IP00), Roller Short Hinge Lever, Screw Terminal	MC002393
Horizontal Limit Switch, Microload (IP00), Unidirectional Short Hinge Roller Lever, Screw Terminal	MC002394
Horizontal Limit Switch, Microload (IP00), Hinge Cross Roller Lever, Screw Terminal	MC002395
Horizontal Limit Switch, Microload (IP00), Standard Hinge Lever, Screw Terminal	MC002396
Horizontal Limit Switch, Microload (IP00), Short Hinge Lever, Screw Terminal	MC002397

Important Notice : This data sheet and its contents (the "Information") belong to the members of the Premier Farnell group of companies (the "Group") or are licensed to it. No licence is granted for the use of it other than for information purposes in connection with the products to which it relates. No licence of any intellectual property rights is granted. The Information is subject to change without notice and replaces all data sheets previously supplied. The Information supplied is believed to be accurate but the Group assumes no responsibility for its accuracy or completeness, any error in or omission from it or for any use made of it. Users of this data sheet should check for themselves the Information and the suitability of the products for their purpose and not make any assumptions based on information included or omitted. Liability for loss or damage resulting from any reliance on the Information or use of it (including liability resulting from negligence or where the Group was aware of the possibility of such loss or damage arising) is excluded. This will not operate to limit or restrict the Group's liability for death or personal injury resulting from its negligence. Multicomp is the registered trademark of the Group. © Premier Farnell Limited 2016.