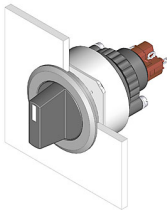


EAO – Your Expert Partner for Human Machine Interfaces

K14-507.22200 - Selector switch actuator 2 positions

K14-507.22200 - Selector switch actuator 2 positions



Attention: The preview is based on a sample product. This can differ from your current configuration.

Mounting

Design	flush
Mounting cut-out	Ø 30,5 mm

Front

Front dimension	Ø 35 mm
Front shape	round

Other Attributes

Weight	0.041 kg
--------	----------

Operating-/Indication part

Lever colour	black
Lever material	Plastic
Lever shape	short
Switching angle	90° right
Lever illumination	non-illuminative

IP-Rating

Front protection	IP67
------------------	------

Connection Method

Terminal	Soldering terminal
----------	--------------------

Actuator

Switching action	Rest - Maintain
------------------	-----------------

Switching element

Rotary positions	2
Switching system	Snap-action switching element
Contacts	2 NC + 2 NO
Switching current	5 A
Contact material	gold-plated silver
Switching voltage	250 V AC

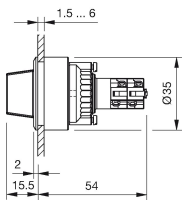
Function

Selector switch

EAO – Your Expert Partner for Human Machine Interfaces

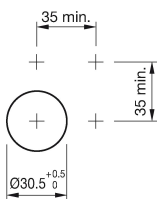
K14-507.22200 - Selector switch actuator 2 positions

Dimensions

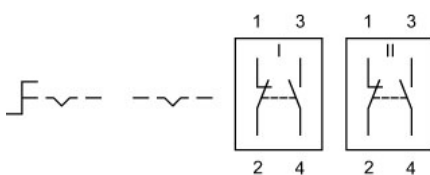


L = Solder terminal

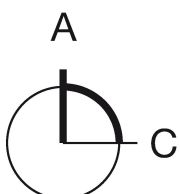
Mounting cut-outs



Wiring diagram



Switching positions



Legend

Contacts: NC = Normally closed, NO = Normally open