

## HDC enclosures HDC 32A SBU 2M25G

**Weidmüller Interface GmbH & Co. KG**  
 Klingenbergstraße 16  
 D-32758 Detmold  
 Germany  
 Fon: +49 5231 14-0  
 Fax: +49 5231 14-292083  
 www.weidmueller.com



The special die-cast alloy and the multi-layered surface sealing provide complete protection for the HDC housings.

The cleverly designed interlock system is manufactured from stainless steel. This guarantees a long lifespan with high resistance to corrosion and impact.

The housing interlock system provides integrated safety. Our unique, patented spring system provides the housing interlock with a secure grip and prevents accidental opening.

The laser marking allows for easy and quick identification. Each housing is permanently labelled with a laser marking so that each product can be quickly designated and positioned.

Weidmüller RockStar® IP 65 / NEMA Type 4X housings - your first choice for industrial housings with IP 65 protection.

### General ordering data

Type	HDC 32A SBU 2M25G
Order No.	<a href="#">1788040000</a>
Version	HDC enclosures, Size: 7, Protection degree: IP65, Base enclosure, Side-locking clamp on lower side, Standard, Size of cable entries: M 25
GTIN (EAN)	4032248205486
Qty.	1 pc(s).

**HDC enclosures  
HDC 32A SBU 2M25G**

**Weidmüller Interface GmbH & Co. KG**  
 Klingenbergstraße 16  
 D-32758 Detmold  
 Germany  
 Fon: +49 5231 14-0  
 Fax: +49 5231 14-292083  
 www.weidmueller.com

**Technical data****Dimensions and weights**

Length	138 mm	Length (inches)	5.433 inch
Width	68 mm	Width (inches)	2.677 inch
Height	75 mm	Height (inches)	2.953 inch
Mounting dimension - width	92 mm	Mounting dimension - height	46 mm
Net weight	462 g		

**Temperatures**

Limit temperature -40 °C ... 125 °C

**Dimensions**

Cable entry	w. threading	Height of base B1	5 mm
Height of housing B	75 mm	Hole pitch length A2	92 mm
Total length housing	82 mm	Width base C1	64.5 mm
Width housing C	56 mm		

**General data**

EMC housings	No	Housing main material	diecast aluminium
Material of locking element	Stainless steel, rust-proof	Protection degree	IP65
Surface finish	Powder coating		

**Version**

Cable entry	w. threading	Clamp version	Side-locking clamp
Design	Standard	Design of housing	Base enclosure
Design of locking system	Side-locking clamp on lower side	Internal thread	M 25
Number of cable entry on top	0	Number of cable entry sideways	2
Sealing	NBR	Size	7
Size of cable entries	M 25	Suitable for ModuPlug®	No
Top part/bottom part/lid	lower part	Type	Base housing

**Classifications**

ETIM 3.0	EC000437	ETIM 4.0	EC000437
ETIM 5.0	EC000437	ETIM 6.0	EC000437
UNSPSC	30-21-18-01	eClass 5.1	27-14-34-19
eClass 6.2	27-26-12-03	eClass 7.1	27-44-02-02
eClass 8.1	27-44-02-02	eClass 9.0	27-44-02-02
eClass 9.1	27-44-02-02		

**Approvals**

Approvals



ROHS

Conform

**Data sheet****HDC enclosures  
HDC 32A SBU 2M25G**

**Weidmüller Interface GmbH & Co. KG**  
Klingenbergstraße 16  
D-32758 Detmold  
Germany  
Fon: +49 5231 14-0  
Fax: +49 5231 14-292083  
www.weidmueller.com

**Technical data****Downloads**

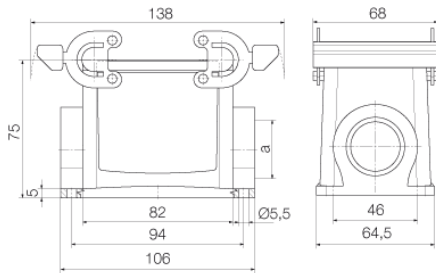
---

Brochure/Catalogue	<a href="#">CAT 3 HDC 17/18 EN</a> <a href="#">FL FIELDWIRING EN</a>
Engineering Data	<a href="#">EPLAN, WSCAD</a>
Technical Documentation	<a href="#">1788040000 HDC 32A SBU 2M25G STP Blatt_1.pdf</a>

---

**Data sheet****HDC enclosures  
HDC 32A SBU 2M25G**

**Weidmüller Interface GmbH & Co. KG**  
Klingenbergstraße 16  
D-32758 Detmold  
Germany  
Fon: +49 5231 14-0  
Fax: +49 5231 14-292083  
[www.weidmueller.com](http://www.weidmueller.com)

**Drawings**

**HDC enclosures  
HDC 32A SBU 2M25G**

**Weidmüller Interface GmbH & Co. KG**  
 Klingenbergstraße 16  
 D-32758 Detmold  
 Germany  
 Fon: +49 5231 14-0  
 Fax: +49 5231 14-292083  
 www.weidmueller.com

**Accessories**

**Cover**



The special die-cast alloy and the multi-layered surface sealing provide complete protection for the HDC housings.

The cleverly designed interlock system is manufactured from stainless steel. This guarantees a long lifespan with high resistance to corrosion and impact.

The housing interlock system provides integrated safety. Our unique, patented spring system provides the housing interlock with a secure grip and prevents accidental opening.

The laser marking allows for easy and quick identification. Each housing is permanently labelled with a laser marking so that each product can be quickly designated and positioned.

Weidmüller RockStar® IP 65 / NEMA Type 4X housings - your first choice for industrial housings with IP 65 protection.

**General ordering data**

Type	Order No.	Version	GTIN (EAN)	Qty.
HDC 32A	<a href="#">1665920000</a>	HDC enclosures, Size: 7,	4008190422950	1 pc(s).
DODQ 4B0		Protection degree: IP65, Cover for lower part of housing, Side-locking clamp on lower side, Standard		