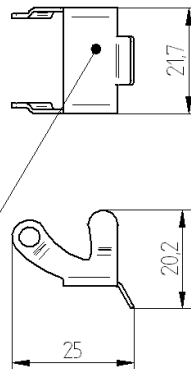
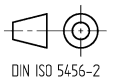


STASI 2, 732-044-000,
Bügel gesondert zu bestellen.
Safety bracket, to order separate.



The information/details in this datasheet merely contain general descriptions or performance factors which, when applied in an actual situation, do not always correspond with the described form, and may be amended by way of the further development of products. The desired performance factors shall only be binding if these are expressly agreed on conclusion of the contract.



Product description

Description	Panel mounted socket
Type	STAKEI 200 grey
Order No	932-047-106
Type of contacts	female
Number of contacts	2+PE
Conductor size	max. 1,5 mm ²
Color housing	grey

Technical data

Clearance / Creepage distance	DIN EN 60664-1 (2008/01); VDE 0110-1
Rated voltage	250 V AC/DC
Rated current *	AC: 16A, DC: 6A
Rated impulse voltage	4,0 kV
Pollution degree	3 acc. to DIN EN 60664-1 (VDE 0110-1)
Contact resistance	< 10 mOhm
Type of connection	screw terminal
Mating cycles	max. 50
Mounting	screw: M 3

* Notice derating

Materials

Contact	CuZn
Contact plating	Cu/Sn
Contact bearer	PA 66 GF
Housing	PA 6 GF
Gasket(s)	NBR

Environmental conditions

Protection class (IEC 60529) *	IP54
Temperature range	-30°C to +90°C, notice Derating

* only if mounted and locked in combination with Hirschmann / Lumberg connector.

Flammability class

Housing	UL 94 HB
Contact bearer	UL 94 V-0

Approvals

VDE	yes
UL	yes
SEV	yes

Accessories

Scope of delivery	Panel mounted socket with flat gaskets
Mating connectors / fitting to	Plug of series STAS... 200
Accessories to order separately	STASI 2, 732-044-000, safety bracket

Additional technical data

Fastening torque (mounting screw)

M 3: (50-60) Ncm, flange

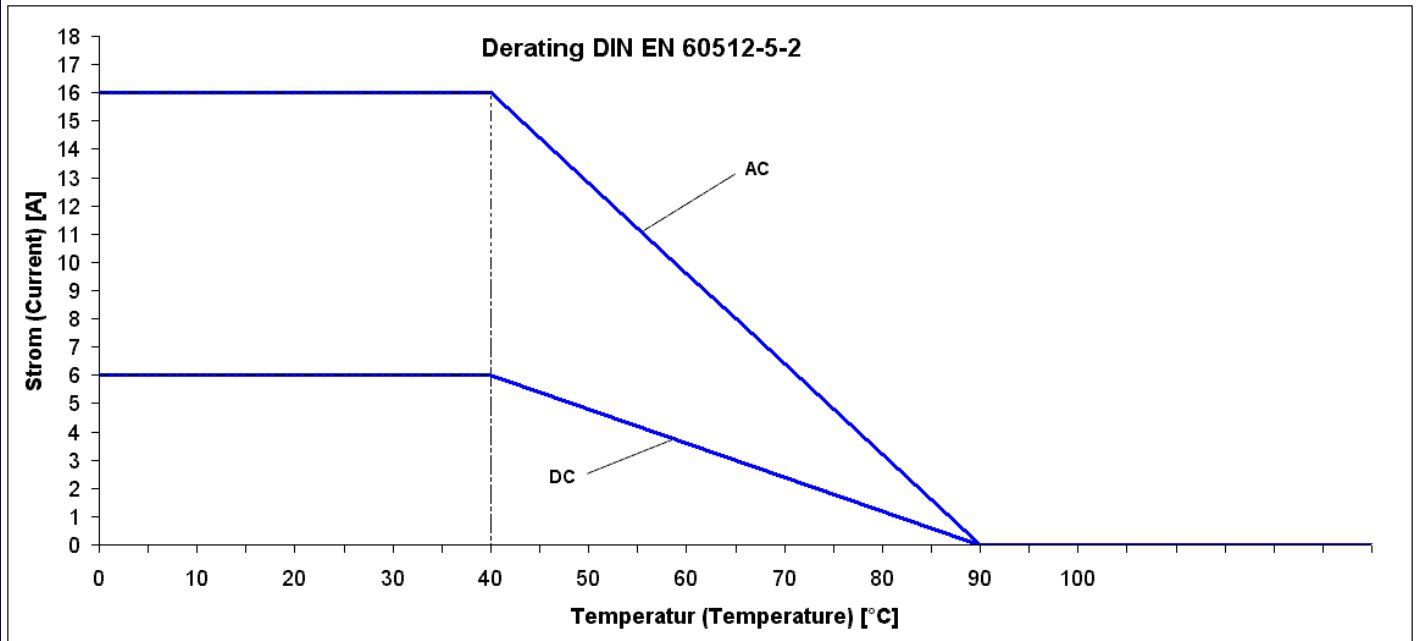
Fastening torque (contact screw)

M 2,5: (40-50) Ncm, housing

M 3: (40-50) Ncm

Notes

Do not connect or disconnect under load.



product overview

Article-No.	Type
932-047-106	STAKEI 200