

HyperLink 2.4 GHz 17 dBi 120 Degree Sector Panel Wireless LAN Antenna Model: HG2417P-120 (Now ANATEL® APPROVED)

Applications and Features

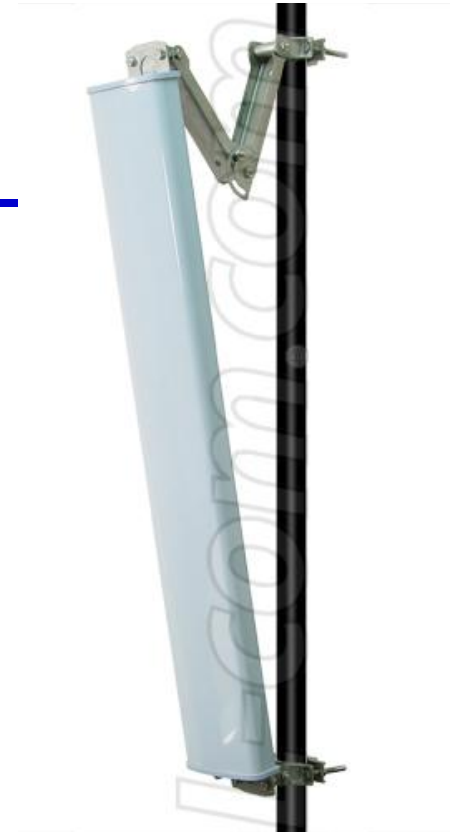
Applications:

- 2.4 GHz ISM Band
- IEEE 802.11b and 802.11g Wireless LAN
- Bluetooth®
- Public Wireless Hotspot
- WiFi
- Wireless Video Systems
- Wireless Internet Provider "cell" sites

Features:



- Now ANATEL® Approved in Brazil
- Superior performance
- All weather operation
- 120° beam-width
- 20° Down-Tilt Mounting Bracket
- Includes Mast Mounting Hardware
- Integral N-Female Connector
- RoHS Compliant



Description

Superior Performance

The HyperGain® HG2417P-120 Sector Panel WiFi Antenna combines high gain with a wide 120° beam-width. It is a professional quality "cell site" antenna designed primarily for service providers in the 2.4GHz ISM band. Applications include IEEE 802.11b and 802.11g wireless LAN systems.

ANATEL® APPROVED

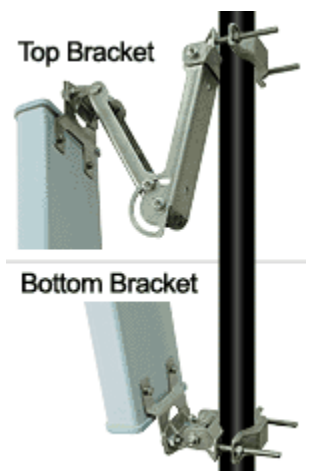
This antenna has been homologated (tested) in Brazil and is ANATEL® APPROVED for all installations in Brazil. This is another antenna in a series of L-com antennas certified for installation and use throughout Brazil.

Rugged and Weatherproof

This antenna features a heavy-duty plastic radome for all-weather operation. The mounting system adjusts from 0 to 20 degrees down tilt.

Ideal for Wireless Internet "Cell" Sites

This WiFi antenna is an ideal choice for Wireless Internet Provider "cell" sites since the cell size can be easily determined by adjusting the down-tilt angle. Horizontal coverage is a full 120 degrees.



Specifications

Electrical Specifications

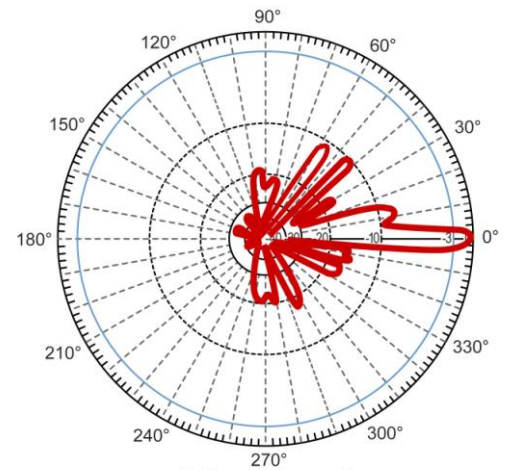
Frequency	2400-2500 MHz
Gain	17 dBi
Horizontal Beam Width	120 degrees
Vertical Beam Width	6.5°
Impedance	50 Ohm
Max. Input Power	250 Watts
VSWR	< 1.3:1 avg.
Connector	N Female
Lightning Protection	DC Short

Mechanical Specifications

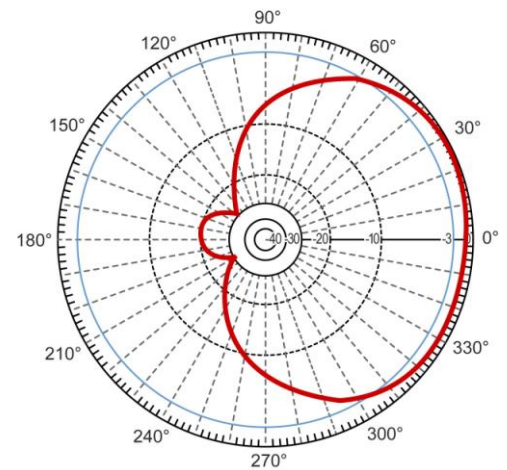
Weight	10 lbs. (4.54 Kg)
Dimensions	39 x 6 x 2.5 inches (99 x 15.3 x 6.4 cm)
Radome Material	UV-Inhibited Polymer
Operating Temperature	-40° C to 85° C (-40° F to 185° F)
Mounting	2 inch (5 cm) O.D. pipe max.
Polarization	Vertical
Down tilt (mech)	0 to 20 degrees (adjustable)
Compliant	ANATEL® and RoHS

Wind Loading Data

Wind Loading	Front Surface	Side Surface
Area	1.63 sq. ft. (.15 sq. meters)	0.68 (.06 sq. meters)
@ 100 MPH (161 KPH)	74 lbs. (33.5 Kg)	35 lbs.(15.8 Kg)



Vertical



Horizontal

Guaranteed Quality

This product is backed by L-Com's Limited Warranty