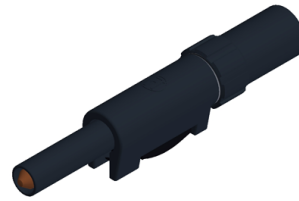






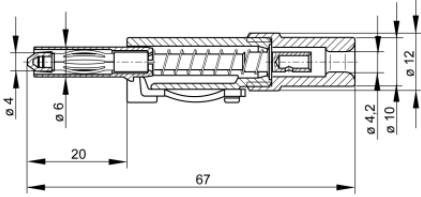


## Plugs

### SLS 10 B



4 mm sliding sleeve system

Product	SLS 10 B
description	Touch protected plug to assemble with solder connection for cables up to 2.5mm <sup>2</sup> . Insulated by latching and sprung insulating sleeve, to be released by pressure on the lateral locking spring. plug with contact spring, 4mm diameter.
article-no. / *colour	9318241xx <div style="display: flex; justify-content: space-around; align-items: center;"> <div style="text-align: center;"> 00 black</div> <div style="text-align: center;"> 01 red</div> <div style="text-align: center;"> 02 blue</div> <div style="text-align: center;"> 03 yellow</div> <div style="text-align: center;"> 04 green</div> <div style="text-align: center;"> 07 white</div> </div> <div style="text-align: right; margin-top: 5px;"><span style="border: 1px solid black; padding: 2px;">Ni</span></div>
drawing	
technical data	
connection	solder connection
rated voltage <sup>(1)</sup>	30 VAC / 60 VDC
measurement cat. acc. to IEC 61010	O <sup>(3)</sup>
rated current <sup>(1)</sup> (consider derating curve)	30 A
material plug	brass, nickel plated
housing material	POM
temperature range acc. To IEC61010 <sup>(2)</sup>	-25 °C to +80 °C
standard	IEC 61010

<sup>(1)</sup> for normal environmental conditions -5°C to +40°C

<sup>(2)</sup> contact the manufacturer for applications at deviating temperature ranges

<sup>(3)</sup> Other circuits that are not directly connected to mains

stand: 26.07.2018