



Type N F/F In/Out RF Coaxial Surge Protector 100MHz - 512MHz  
DC Block 750W IP67 20kA Filter Bracket Away from Arrestor

## RF Surge Protectors Technical Data Sheet

LCSP1035

### Features

- Surge current of 20kA
- Max Power 750W
- Frequency range from 100 MHz to 512 MHz VHF Band
- N Female to N Female connectors
- VSWR 1.1:1
- Waterproof IP67 rated
- DC Block
- Multi-strike capability
- CE & RoHS compliant

### Applications

- Emergency response systems
- Public safety systems

### Description

RF surge protector (also known as lightning arrester) LCSP1035 from L-COM utilizing a patented filter surge protection technology acts as a high-band filter shunting surge energy to ground to protect critical hardware while maintaining the RF performance. This RF surge protector component is manufactured in a coaxial in-line design with wide operating frequency range. All L-COM RF surge protector products are available in stock with same day shipping.

### Electrical Specifications

Surge Protector Type  
DC Handling

Surge Filter  
DC Block

Description	Minimum	Typical	Maximum	Units
Frequency Range	100		512	MHz
Impedance		50		Ohms
VSWR			1.1:1	
Return Loss			26	dB
Insertion Loss			0.1	dB
Input Power, CW			750	Watts
Surge Current IEC 61000-4-5 8/20µs WAVEFORM			20	kAmps
Throughput Energy FOR 3kA, 8/20µs WAVEFORM			0.5	µJ

### Mechanical Specifications

#### Configuration

Input Connector                      N Female  
Output Connector                    N Female

Click the following link (or enter part number in "SEARCH" on website) to obtain additional part information including price, inventory and certifications: [Type N F/F In/Out RF Coaxial Surge Protector 100MHz - 512MHz DC Block 750W IP67 20kA Filter Bracket Away from Arrestor LCSP1035](#)



Type N F/F In/Out RF Coaxial Surge Protector 100MHz - 512MHz  
DC Block 750W IP67 20kA Filter Bracket Away from Arrestor

RF Surge Protectors Technical Data Sheet

LCSP1035

**Environmental Specifications**

**Temperature**

Operating Range

-50 to 85 deg C

Ingress Protection (IP) Rating

IP 67

**Compliance Certifications** (see [product page](#) for current document)

**Plotted and Other Data**

Notes:

Our portfolio includes cable assemblies, connectors, adapters and custom products, as well as their wireless product line which includes antennas, RF amplifiers, coaxial lightning and surge protectors, and NEMA rated enclosures.

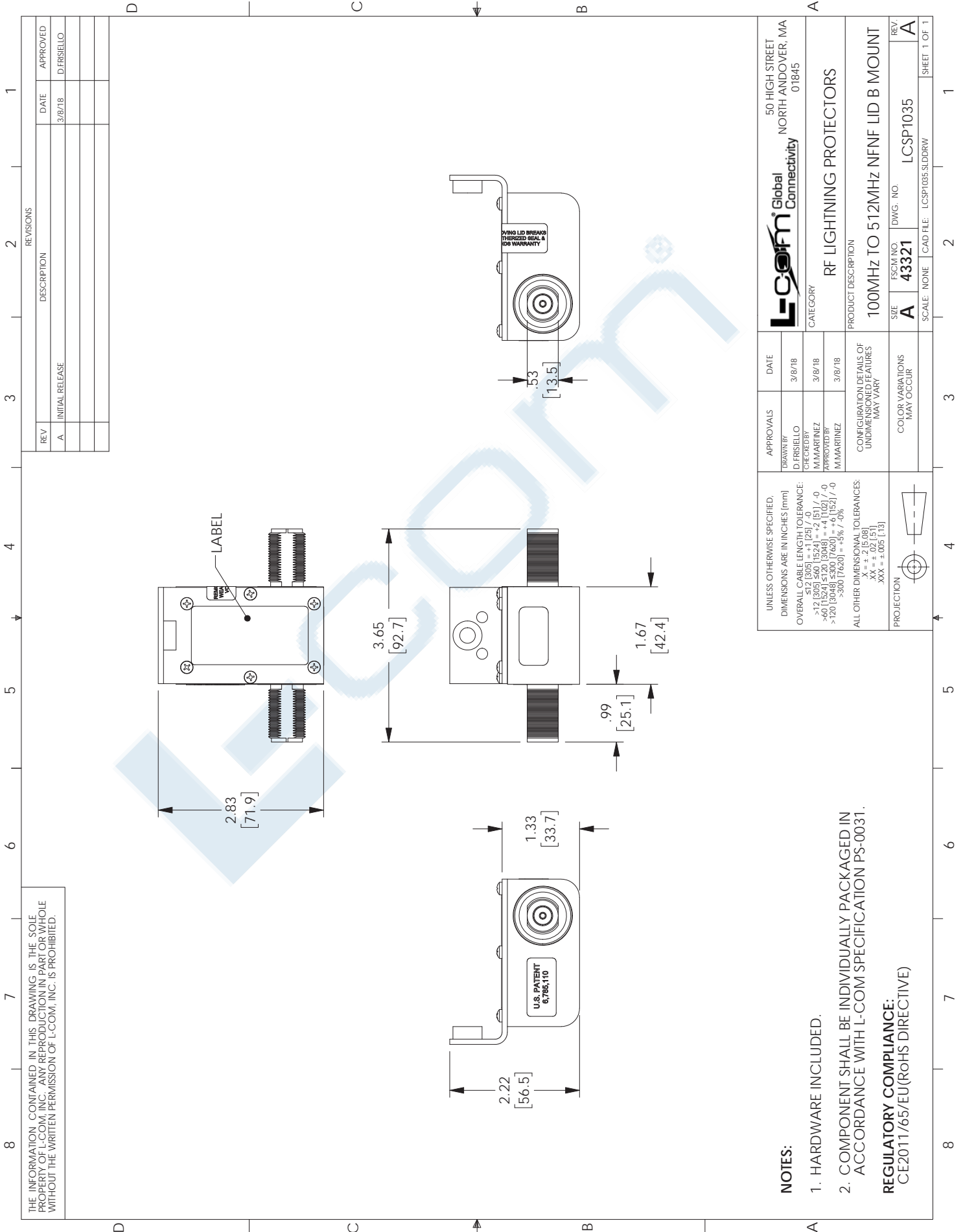
Click the following link (or enter part number in "SEARCH" on website) to obtain additional part information including price, inventory and certifications: [Type N F/F In/Out RF Coaxial Surge Protector 100MHz - 512MHz DC Block 750W IP67 20kA Filter Bracket Away from Arrestor LCSP1035](#)

URL:

The information contained in this document is accurate to the best of our knowledge and representative of the part described herein. It may be necessary to make modifications to the part and/or the documentation of the part, in order to implement improvements. L-com reserves the right to make such changes as required. Unless otherwise stated, all specifications are nominal. L-com does not make any representation or warranty regarding the suitability of the part described herein for any particular purpose, and L-com does not assume any liability arising out of the use of any part or documentation.

# LCSP1035 CAD Drawing

Type N F/F In/Out RF Coaxial Surge Protector 100MHz - 512MHz  
DC Block 750W IP67 20kA Filter Bracket Away from Arrestor



THE INFORMATION CONTAINED IN THIS DRAWING IS THE SOLE PROPERTY OF L-COM, INC. ANY REPRODUCTION IN PART OR WHOLE WITHOUT THE WRITTEN PERMISSION OF L-COM, INC. IS PROHIBITED.

**NOTES:**

1. HARDWARE INCLUDED.
  2. COMPONENT SHALL BE INDIVIDUALLY PACKAGED IN ACCORDANCE WITH L-COM SPECIFICATION PS-0031.
- REGULATORY COMPLIANCE:**  
CE2011/65/EU (RoHS DIRECTIVE)

UNLESS OTHERWISE SPECIFIED, DIMENSIONS ARE IN INCHES (mm)		APPROVALS	DATE	L-com Global Connectivity 50 HIGH STREET NORTH ANDOVER, MA 01845	
OVERBALL CABLE LENGTH TOLERANCE: ≤12 (305) = +1 (25) / -0 >12 (305) ≤60 (1524) = +2 (51) / -0 >60 (1524) ≤120 (3048) = +4 (102) / -0 >120 (3048) ≤180 (4572) = +6 (152) / -0 >180 (4572) ≤300 (7620) = -5% / +0%		DRAWN BY D. FRISIELLO	3/8/18	RF LIGHTNING PROTECTORS	
ALL OTHER DIMENSIONAL TOLERANCES: X = ±.005 [13] XX = ±.01 [25] XXX = ±.015 [38]		CHECKED BY M. MARINEZ	3/8/18	CATEGORY	
PROJECTION		APPROVED BY M. MARINEZ	3/8/18	PRODUCT DESCRIPTION	
COLOR VARIATIONS MAY OCCUR		CONFIGURATION DETAILS OF UNDIMENSIONED FEATURES MAY VARY		100MHz TO 512MHz NFNF LID B MOUNT	
REV. A		FSCM NO. 43321		SIZE A	
SHEET 1 OF 1		DWG. NO. LCSP1035		SCALE: NONE   CAD FILE: LCSP1035.SLDDRW	